

~ 1 ~

# **ABERCROMBIE-THOMAS-WALLIS-STEWART GENEALOGIES**

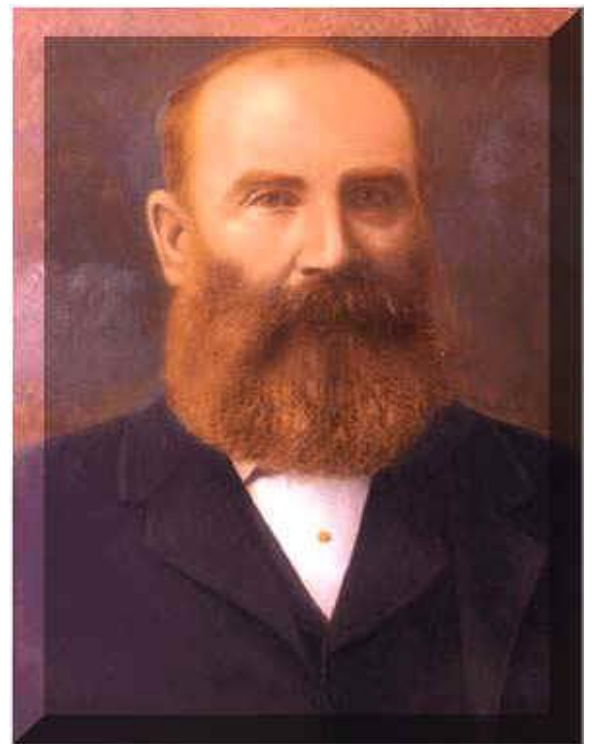
## **JOURNAL FIVE. PART ONE**

### **STEWART/STUART**

#### **ISLE OF SKYE, SCOTLAND PRINCE EDWARD ISLAND-CANADA NEW ZEALAND**

**CONTINUATION FROM THE ABERCROMBIE JOURNAL ONE, (PART ONE). THOMAS JOURNAL TWO, (PART TWO). SUXSPEACH FAMILY. HAROLD AND PENELOPE THOMAS WW1 EXPERIENCES. JOURNAL THREE (PART THREE). AND WALLIS AND DOCKERY JOURNAL FOUR PART ONE...JOURNAL FOUR PART TWO**

**FOR  
JOHANNA ILANA THOMAS-MAUDE**



**Above: Margaret and Angus Malcolm Stewart** immigrated to New Zealand from Prince Edward Island Canada in 1858. They were ancestors of the original Selkirk settlers of Prince Edward Island, Canada, whose families were originally Crofters and Fisher-folk from the Isle of Skye, Scotland



**The early Scottish settlers on Prince Edward Island relied on fishing as a mainstay while they developed their fifty-acre plots and built substantial homes.**

<http://a-drifting-cowboy.blogspot.com/2014/08/great-granddad-was-prince-edward-island.html>

## Historical Timeline

[https://www.collectionscanada.gc.ca/eppp-archive/100/200/301/ic/can\\_digital\\_collections/fisheries\\_then/history/europe\\_begin.asp](https://www.collectionscanada.gc.ca/eppp-archive/100/200/301/ic/can_digital_collections/fisheries_then/history/europe_begin.asp)

---

### c. 8,000 BC

A Paleo-Indian population is the first to inhabit [Prince Edward Island](#).

[\(see related article\)](#)

---

### c. 1 AD

The first [Mi'kmaq](#) arrive on [Prince Edward Island](#).



[\(see related article\)](#)

---

**1534**

Jacques Cartier explores the Gulf of St. Lawrence and is the first European to record a visit to [Prince Edward Island](#).



[\(see related article\)](#)

---

**c. 1600**

The Basques, from Spain and France, fish the waters around [PEI](#) and set up temporary settlements.

[\(see related article\)](#)

---

**1603**

Samuel de Champlain begins his exploration of the [Maritime region](#).

[\(see related article\)](#)

---

**1635**

The [Island](#) is granted to French pioneer Nicolas Denys.

[\(see related article\)](#)

---

**1713**

Mainland [Acadia](#) falls to the English and the French begin colonization efforts on [PEI](#).

[\(see related article\)](#)

---

**1719**

The [Island](#) is granted to the Comte de Saint Pierre and by the next year settlement is underway.

[\(see related article\)](#)

---

**1732**

Frenchman Jean-Pierre Roma founds a fishing settlement at Three Rivers on the eastern end of the [Island](#).

[\(see related article\)](#)

---

**1755**

The British deport most of the [Acadian](#) population of the [Maritimes](#) in the Great Expulsion.

[\(see related article\)](#)

---

**1758**

The British capture [Isle St. Jean](#) from the French.

[\(see related article\)](#)

---

**1764**

Samuel Holland surveys the [Island](#) and divides it into 67 Lots to be granted to British landlords.



[\(see related article\)](#)

---

**1839**

Hunted to death by American and [Island](#) fishermen, the walrus is officially declared extinct on [PEI](#).

[\(see related article\)](#)

---

**1845-1846**

The first lighthouse on [Prince Edward Island](#) is built at Point Prim.

[\(see related article\)](#)

---

**c. 1850**

An effective canning technique for lobsters is introduced to [PEI](#) and precedes a boom in the lobster fishery.



[\(see related article\)](#)

---

**1854**

The Americans and British sign the [Reciprocity Treaty](#), which eliminates the three-mile fishing limit and allows free trade between [British North America](#) and the United States.

[\(see related article\)](#)

---

**1867**

Confederation is signed creating the nation of Canada.

**1873**

[Prince Edward Island](#) joins Confederation and becomes a part of Canada.

**1889**

Lobster fishing seasons are established to protect lobsters as they [spawn](#).

[\(see related article\)](#)

---

**c. 1910**

The first gasoline boat engines come into use in the [Island](#) fishery.



[\(see related article\)](#)

---

**1914-1918**

The First World War

[\(see related article\)](#)

---

**c. 1914**

By this time, 5 life-saving stations are established on [PEI](#).



[\(see related article\)](#)

---

**1924**

Tignish fishermen band together to form the first fisherman's union in Canada.

[\(see related article\)](#)

---

**1927**

The first live shipment of lobsters by rail from [Prince Edward Island](#) is made by Tignish Fisheries Limited to the United States market.

[\(see related article\)](#)

---

**1929-1939**

The [Great Depression](#)

[\(see related article\)](#)

---

**1929**

The United Maritime Fishermen (UMF) union is formed.

[\(see related article\)](#)

---

**1939-1945**

The Second World War.

[\(see related article\)](#)

---

**1942**

The [Island's](#) hake and mackerel fishery experience a sudden boom as the UNRRA (United Nations Relief and Rehabilitation Agency) purchases huge amounts of canned fish for victims of the war.

[\(see related article\)](#)

**c. 1950**

The Irish Moss industry gains momentum.



[\(see related article\)](#)

**c. 1970**

A surplus of fishermen and a depletion of fish stocks in the waters around [PEI](#), encourage the government to invest in aquaculture.



[\(see related article\)](#)

**1973**

The GPS (Global Positioning System) is developed for navigation.

[\(see related article\)](#)

**1989**

The last manned lighthouse on [PEI](#), the Wood Islands lighthouse, is automated.

## The Native Fishery

### FIRST INHABITANTS

The first inhabitants of [Prince Edward Island](#) were the Paleo-Indians. They arrived in the [Maritime](#) region approximately 10,000 years ago. These early hunters were descendants of those who crossed the land-bridge between present-day Alaska and Russia 15,000-35,000 years earlier. Over many thousands of years these hunters and gatherers followed the animals they hunted, and spread across North America.

These earliest settlers on the [Island](#) were primarily interested in the seal hunt on the eastern coast. Artifacts found near Souris and East Point show that hunters used stone-tipped harpoons to kill their prey. A spear-point found at [Basin Head](#) gives concrete evidence that Paleo-Indians frequented the Island. Seals were harpooned either from boats or from shore when conditions permitted.

### SHELLFISH PEOPLE

Around 3,500 B.C., a new group of people migrated into the [Maritime](#) region and inhabited [Prince Edward Island](#). They relied on the abundant shellfish found along the shore for food. Because of their reliance on this food resource, these people are often referred to as

the *Shellfish People*. Today mounds of shells can sometimes be found near ancient campsites, marking their settlements.

### THE MI'KMAQ

About 2,000 years ago, the Mi'kmaq arrived on P.E.I. and replaced the resident population. The Mi'kmaq, like the native population before them, subsisted on a hunting-fishing culture.



Fishing and hunting played an integral role in Mi'kmaq culture. Because the Mi'kmaq had little or no agriculture to supplement their food supply, they relied solely on what they could gather from the wild, fish from the ocean, and hunt on the land. Legends and religious beliefs reflect this importance. Recreational hunting or fishing was strongly discouraged by the Mi'kmaq. All hunting or fishing had to have a purpose and as little of the catch as possible was left to waste.

Hunting and fishing were primarily activities carried out by the men of the camp. Building fish traps, weirs, and other fishing material was also a male job. Women maintained the camp, moved the camps and equipment, and carried game back to the camp. The women also prepared the catch to eat.

The Mi'kmaq usually lived in small groups consisting of one or two families. These groups migrated year-round to take advantage of the best food sources available. In spring, summer, and early autumn, they lived near a river or the ocean to access the fishery as well as to hunt and find wild plants. Late in autumn, camps were moved further inland to the protection of the forest for the cold winter months. Although living inland, throughout the winter the Mi'kmaq continued to frequent the shore to hunt seals.

In 1616, Father Briard, a Jesuit missionary, wrote a description of the yearly migratory cycle of the Mi'kmaq people. Although Briard described the life of the Mi'kmaq people of Nova Scotia, Kennedy Wells suggests that this outline would hold true for the Island's Mi'kmaq as well.<sup>1</sup> The following is a summary of Briard's writing with respect to the fishery:



- "in January they have the seal hunting"
- "in the middle of March fish begin to spawn... often so abundantly that everything swarms with them"
- "after the smelt comes the herring at the end of April; and at the same time... the sturgeon, and salmon"
- "from the month of May up until the middle of September, they are free from all anxiety about their food; for the cod are upon the coast, and all kinds of fish and shellfish"

- "[in September] the eels spawn"
- "in December... comes a fish called by them ponamo [probably tom-cod] which spawns under the ice"<sup>2</sup>

## European Beginnings

### THE BASQUE FISHERS

The first Europeans to take advantage of the abundant fisheries on [Prince Edward Island](#) were most likely the Basques, a fishing people from Spain and France. Samuel de Champlain, the French explorer, and Nicolas Denys, the French pioneer, both reported that during the 1600's, the Basques frequently fished in the waters off [Prince Edward Island](#), then known as [Isle St. Jean](#). Occasionally these fishermen would even establish temporary camps called *dégrats*, where they would prepare their catch for the journey back to Europe. During this period, there was no permanent European settlement on the Island, despite repeated attempts to create one.<sup>1</sup> D.C. Harvey explains the French desire to establish a colony in [Isle Saint Jean](#) in his book *The French Regime on Prince Edward Island*.

"But it had long been the dream of the more enterprising captains of this industry to establish a sedentary fishery for which their countrymen would be encouraged to settle at various strategic points, and to erect permanent stages for drying fish, together with such storehouses as were necessary for the conduct of the fishery and for the sustenance of the fishermen. Incidentally these residents would become inhabitants of the new lands... the enterprise as a whole, in that it provided colonies for France and fish for Catholic Europe, would redound to the welfare of France and to the glory of God."<sup>2</sup>



### FRENCH SETTLEMENT

The French attempted to encourage permanent fishing settlements by granting land to wealthy individuals. In exchange for rights to the land and its resources, the landowner was expected to bring in permanent settlers. The first grant to include [Isle Saint Jean](#) was awarded in 1635 to none other than Nicolas Denys. Denys wanted to create a permanent settlement of the Island that would take advantage not only of the cod fishery, but the seals and walrus, which were abundant on the Island's north shore at the time. Unfortunately, due to a combination of bad luck, neglect, rivalry with other French colonists, and wars with the English, Denys' plan never became a reality.<sup>3</sup>

After Denys, [Isle St. Jean](#) was given in grants several more times: to François Doublet in 1663<sup>4</sup>, to Gabriel Gauthier in 1684,<sup>5</sup> and finally to Sr. de Louvigny in 1710.<sup>6</sup> Each of these men failed to establish a permanent settlement, fishing, farming or otherwise, on [Isle Saint Jean](#). This was because for the most part, each of these men were only interested in making money from the lucrative fisheries. They did not wish to bear the expense of building a costly colony. However, when [Acadia](#) fell to the English in 1713, leaving only Cape Breton (then called Isle Royale,) and [Isle Saint Jean](#) in French hands, the French finally began to seriously consider establishing settlements on [Isle Saint Jean](#).



## Lobster Fishing and the Canning Industry

Lobsters have always been plentiful around the shores of [Prince Edward Island](#). However, only after the 1860's did they begin to be viewed as a delicacy on [PEI](#). Unlike fish such as cod or herring, lobster were difficult to transport after they had been caught. Common preservative techniques such as salting and drying did not work with lobster. For this reason, [Islanders](#) were unable to export lobsters to lucrative markets in Europe and the United States. In fact, lobsters were so cheap and bountiful on the [Island](#), surplus lobsters were sometimes spread on fields as fertilizer by early farming settlers.<sup>1</sup>

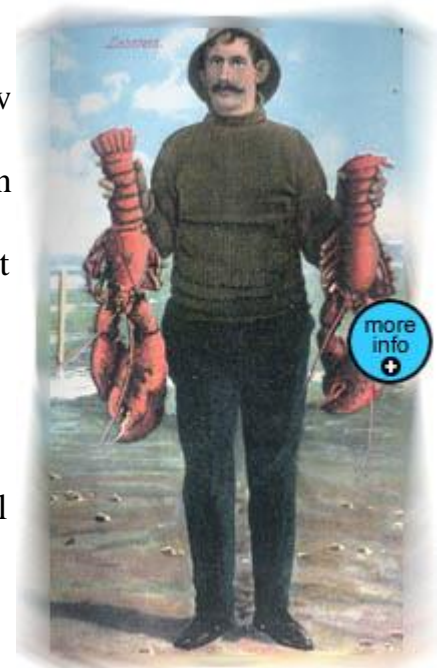
### THE LOBSTER BOOM BEGINS

Although lobster fishing had humble beginnings on the [Island](#), new technologies and incentives encouraged a lobster boom in the 1870's. One major catalyst for this boom was the introduction of an effective canning technique c. 1850. Once canned, lobster meat could safely be shipped around the globe. [PEI's](#) exhibit at the Great International Exhibition in London in 1862 advertised lobsters to the British market. Britain soon became a major market for [Prince Edward Island](#) canned lobster.

Lobster fishing was a viable investment for [Islanders](#) during the 1800's. [Islanders](#) could not afford to invest in the cod and mackerel fishery to compete with American fishermen. The high cost of large vessels and extensive equipment was more than most could afford. In comparison, lobster fishing gear was simple and inexpensive. A [dory](#) and a few homemade traps were all that were required to enter the industry.

Canning facilities grew slowly in the beginning and in 1873 there were still only two canneries in operation on [PEI](#). However, in less than ten years the industry saw rapid growth and over 200 canneries were constructed near harbours and bays around the [Island](#). Because lobsters spoil quickly, it was necessary for canning facilities to be located very near the fishing grounds. At the height of the lobster boom "each little cove had its own lobster factory"<sup>2</sup>.

Fears that the lobster stocks were not as limitless as first expected began to surface after the mid 1880's. Fishermen noticed that fewer large lobsters were being caught. By 1887, a drastic decrease in sizes was seen and more fishermen and politicians began to take notice. In 1889 lobster seasons were established to protect the lobsters as they [spawned](#). Two years later lobster fishermen were required to obtain a license and pay a fee per trap. In 1894, lobster canneries were forced to acquire licenses to operate. Although these steps were intended to protect lobster stocks, they were loosely regulated and poorly enforced.



By the turn of the century, the lobster boom on [Prince Edward Island](#) was on the decline. Reduced stocks of lobsters were a primary factor in the closure of many canning facilities. With the advent of the railroad on the [Island](#), it was also possible to ship fresh lobsters by rail by 1927, and customers preferred fresh lobster to canned.

## **SOURCES FOR THIS THREAD OF THE STUART/STEWART GENEALOGY**

**PLEASE NOTE:** Some of the international records compiled for these genealogies come from the MORMON data base in Salt Lake City, America...

<https://www.familysearch.org/>

This data base is compiled from official Parish, Church and Archives records from all over the world. From my experience, their records are bang on...

Most of the New Zealand records come from the data base of New Zealand's historical births, deaths marriages NZBDM site at ...

<https://www.bdmhistoricalrecords.dia.govt.nz/>

Also included are the following sites which help as well...

Archives...

Papers Past <https://islandnewspapers.ca/>

[Australia And New Zealand, Find A Grave Index, 1800s-Current](#)

World War Service Records Free NZ

New Zealand Electoral Rolls 1853 To 1981

International And New Zealand Census Records

Free NZ Family History Search

**ALSO:** Many thanks to your cousin Pdraig Grant IN IRELAND: He has made my research so much easier with his huge cobweb of family threads...

See more [Stewart](#) memorials in:  
[Saint John's Presbyterian Cemetery](#)  
[Belfast](#)  
[Queens County](#)  
[Prince Edward Island](#)  
[Canada](#)  
[Find a Grave](#)



**Above: The compiler and his daughter Johanna Ilana Thomas-Maude. Johanna is a descendant of the Stewart family of the Isle of Skye, Scotland. Prince Edward Island, Canada, and then New Zealand. Known generation nine...**

- 1/. Peter**
- 2/. Charles**
- 3/. Malcolm Alexander**
- 4/. Angus Malcom**
- 5/. Malcolm**
- 6/. Mervyn**
- 7/. Noelene Heath**
- 8/. Valerie Thomas**
- 9/. Johanna Ilana Thomas-Maude**

**I AM THEE  
AND THEE ARE ME  
FOREVER AND EVER MAY THE CLANS ROAM FREE**

**The compiler. Roger Mold**  
**Email [rangerrodge@gmail.com](mailto:rangerrodge@gmail.com)**  
**Website: [kaihuvalleyhistory.com](http://kaihuvalleyhistory.com)**

**Note: He left school just before the age of fifteen.**  
**There will be some grammar and spelling mistakes.**  
**All, if any, within the eye of the reader.**  
**Critiques will be welcome.**

## CHAPTERS

### CHAPTER ONE

HISTORY CHITTER CHATTER FOR THIS THREAD  
OF THE STEWART FAMILY OF THE ISLE OF  
SKYE, SCOTLAND

PAGE 15

### CHAPTER TWO

LOT 62, PRINCE EDWARD ISLAND, CANADA

PAGE 29

### CHAPTER THREE

FIRST KNOWN ANCESTORS

(PADRAIG STIUBHAIRT AND  
CAIRISTIONA NICMHAOLAIN)

PAGE 36

### CHAPTER FOUR

CHILDREN OF PETER STEWART AND  
CHRISTINA MCMILLAN

PAGE 39

### CHAPTER FIVE

3/. DONALD STEWART AND CATHERINE  
MORRISON

PAGE 40

### CHAPTER SIX

CHILDREN OF DONALD STEWART AND  
CATHERINE MORRISON

PAGE 42

### CHAPTER SEVEN

4/. MALCOLM STEWART AND FLORA CAMPBELL

PAGE 72

### CHAPTER EIGHT

5/. ANGUS STEWART AND ANN (NANCY)  
MACMILLAN

PAGE 77

### CHAPTER NINE

PETER STUART/STEWART AND CHRISTINA  
(CHRISTY) MACMILLAN THEN MARGARET  
MACKENZIE

PAGE 80

### CHAPTER TEN

2/. CHARLES STUART-STEWART AND MARY  
MCMILLAN

PAGE 85

### CHAPTER ELEVEN

CHILDREN OF CHARLES STEWART/STUART  
AND MARY MCMILLAN

PAGE 90

### CHAPTER TWELVE

3/. MALCOLM STUART-STEWART AND MARY  
MCPHERSON

PAGE 119

### CHAPTER THIRTEEN

MARY MCPHERSON AND HER FAMILY  
MARY MARRIED MALCOLM STEWART

PAGE 128

### CHAPTER FOURTEEN

CHILDREN OF MALCOLM AND MARY STEWART

PAGE 143

CHAPTER ONE

**HISTORY CHITTER CHATTER FOR THIS THREAD OF THE STEWART  
FAMILY WHO HAD LIVED ON THE ISLE OF SKYE, SCOTLAND**



**Scottish: originally an occupational name for an administrative official of an estate, from Middle English stiward, Old English stigweard, stiweard, a compound of stig ‘house(hold)’ + weard ‘guardian’. In Old English times this title was used of an officer controlling the domestic affairs of a household, especially of the royal household; after the Conquest it was also used more widely as the native equivalent of Seneschal for the steward of a manor or manager of an estate.**

**Source: Dictionary of American Family Names ©2013, Oxford University Press**



Above: The Colbost Croft Museum / Folk Museum showing nineteenth century Hebridean crofter's blackhouse with heather-thatched roof on the Scottish Isle of Skye, Scotland.

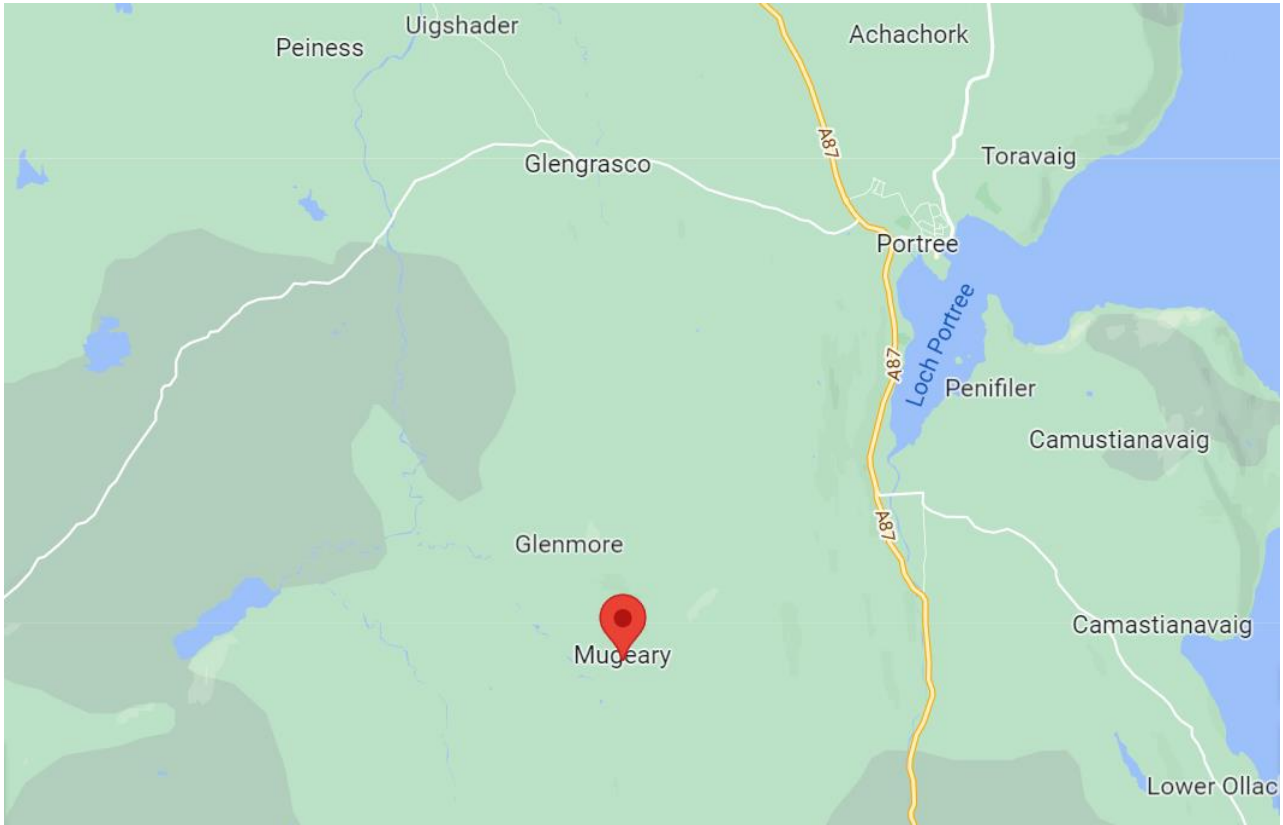
Source: Arterra/Universal Images Group via Getty Images

### MIGRATION

*In search for a better life, children of **Patrick and Christina Stewart** joined the exodus to Prince Edward Island, Canada, in 1803.*

*Three ships left Portree, on the Isle of Skye, in June 1803. They were led by Thomas Douglas, the fifth Earl of Selkirk. The ships were the 'Dykes', the 'Polly' and the 'Oughton' and held 800 settlers from Scotland. They spent five weeks at sea before landing in Belfast Cove, off Hillsborough Bay on Prince Edward Island.*

*But it didn't stop there. Sixty years later, **Margaret and Angus Malcolm Stewart**, descendants of **Patrick and Christina Stewart**, immigrated to New Zealand from Prince Edward Island, Canada, on the Brigantine '**Prince Edward**' from Charlottetown harbour Prince Edward Island, 1st Dec 1858, arriving in Auckland harbour about 15<sup>th</sup> May 1859. A very long journey...*



**Maps showing the district of Mugeary on the Isle of Skye, Scotland. It has been said that this was the home of the Stewart Clan who had ancestors migrating to Prince Edward Island, Canada and further-more to New Zealand and Australia**



## THE SCOTTISH SELKIRK SETTLEMENT ON PRINCE EDWARD ISLAND, CANADA

*The 800 settlers who arrived here in 1803 aboard the "Polly," "Dykes," and "Oughton" from the Isle of Skye, Scotland, enjoyed Selkirk's financial support and personal supervision and settled on land which he had purchased. Together with earlier immigrants from the Highlands and Hebrides, the Selkirk settlers established an enduring Scottish tradition on Prince Edward Island.*



Above: One of the monuments is this CNHE plaque which commemorates Thomas Douglas, Fifth Earl of Selkirk, and the immigrants who arrived here in 1803 from the Scottish Highlands to begin a new life. The plaque is mounted on a cairn made of mortared native sandstone rocks at the southeast corner of the campground, beside Selkirk Park Road.

### LORD SELKIRK

*With poverty and even starvation becoming widespread in Ireland and the Scottish Highlands, it was Thomas Douglas who proposed emigration as a possible solution to the problem. He was eventually able to convince the government to allow emigration of Scots Highlanders, the emigration of 800 of which took place in 1803. The government refused to finance the project, however, so Thomas used his own money to fund the expedition. Though he later became entwined in politics at home, Douglas, later known as Lord Selkirk, never lost his desire and drive to aid the destitute farmers and serfs of Scotland and Ireland, organizing further migrations to Canada, most successful, some not so.*

*Lord Selkirk began to travel and plan, trying to find the best place for these farmers to go. In 1802, he decided that Prince Edward Island was that place. Lord Selkirk bought an estate of 80,000 acres and put forward his plan to the government. The government refused to support him, but he did not give up. Instead, he used his own money from an inheritance to finance the trip.*

*Lord Selkirk financed three ships to take the Scottish farmers to Prince Edward Island. They set off in the summer of 1803. The first ship, the 'Polly', landed on August 7th. Lord Selkirk was on the 'Dykes', which arrived two days later. The third ship, the 'Oughton', arrived on August 27th. In all, about 800 crofters emigrated with Lord Selkirk. They were mostly from Skye, a mountainous island in the Hebrides of Scotland. They settled on Selkirk's land in the woods of Belfast, Prince Edward Island.*

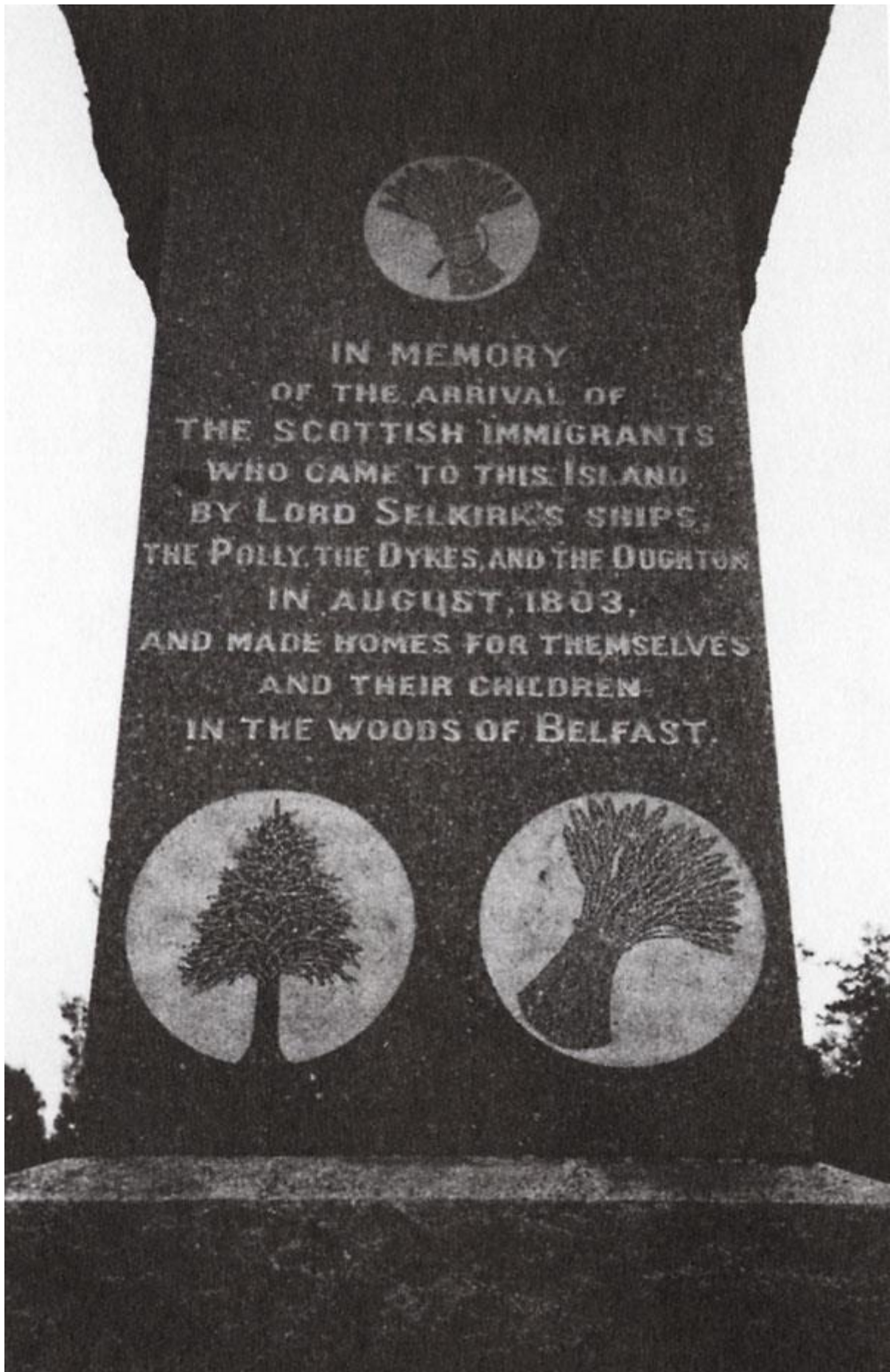
*The land these new settlers were to have, was evergreen forest. Each family was given between 50 and 150 acres for a small price. The lots were laid out so that four or five families were grouped together. In this way, they were able to comfort and support each other. They then began the difficult task of clearing the land.*

*Among the Selkirk settlers was a teacher, Donald Nicholson, who taught their children and a doctor, Dr. Angus MacAulay, to look after the sick.*

From [Collections Canada](#)

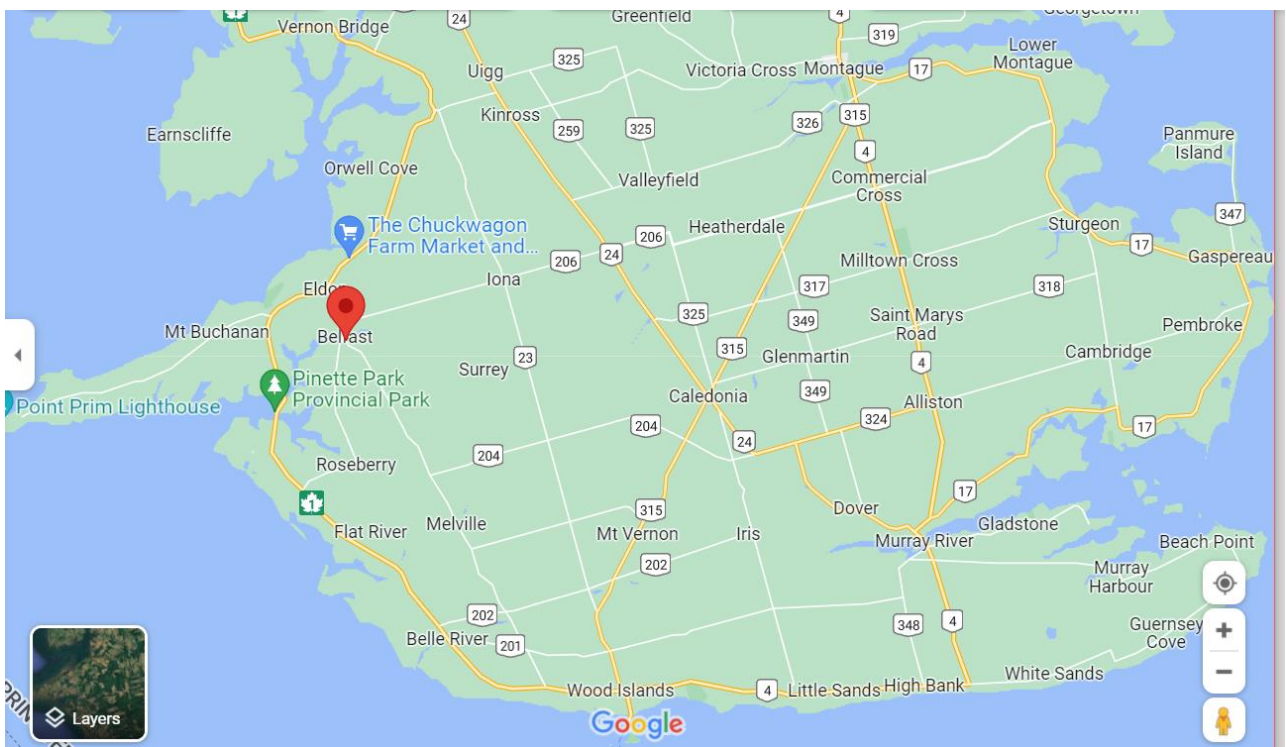


**Left: Thomas Douglas, later known as 'Lord Selkirk'**





**BELFAST, PRINCE EDWARD ISLAND, CANADA**



**21 INTERESTING AND AWESOME FACTS ABOUT BELFAST, PRINCE EDWARD ISLAND,  
CANADA SEPTEMBER 4, 2020**

1. *Belfast is a municipality that holds community status in Prince Edward Island, Canada.*
2. *Belfast's economy is driven by agriculture.*
3. *Belfast was the landing site of Lord Selkirk's settlers in 1803.*
4. *These poor displaced Scottish farmers soon established themselves on the best land in the area and it became one of the most productive farming districts in the colony.*
5. *The Presbyterian Scots were joined in the mid-19th century by displaced Irish potato famine refugees who were forced to take poorer land in surrounding areas.*





**Above: Prince Edward Island, is famous for its red soil**

**The Charlottetown soil is the main soil of Prince Edward Island, accounting for roughly 470,000 acres of land. It has a sandy texture, is well drained and is very suitable for farming. The redness of the soil is due to the high iron-oxide (rust) content.**

**Designating a provincial soil respects the need to protect, preserve, and maintain the sustainability of our soil as a vital and non-renewable resource.**

**The designation of provincial soils in each province is an initiative of the [Canadian Society of Soil Science](#) (link is external).**



**6. Political, social, and economic tensions between the Roman Catholic Irish and Presbyterian Scots boiled over during a general election in March 1847, resulting in what has become known as the Belfast Riot.**

*7. Today, Belfast is known for its golf course Belfast Highland Greens, Mini Woollen Mills, and many art studios and pottery shops.*

*8. Also of interest is the lighthouse at nearby Point Prim, which was designed by Architect Isaac Smith in 1845 (notable for designing Province House (Prince Edward Island)) and is the oldest lighthouse on the Island.*

*9. The 18.2 m (60 foot) structure is also the only round brick lighthouse on PEI and one of the last of its kind in Canada.*

*10. On the road to Point Prim Lighthouse is Hannah's Bottle Village, a local tourist attraction made up of several miniature buildings constructed of glass bottles and cement.*



- 11. There is no admission charge, but donations to the IWK Health Centre in Halifax are accepted.*
- 12. Of particular note is the local parish church, St. John's.*
- 13. Built in 1824 in the style of Sir Christopher Wren, Saint John's is today under the pastoral care of Rev. Roger W. MacPhee.*
- 14. In 2005, the church invited Robin Mark, a popular Christian musician from Belfast, Northern Ireland, to lead their "Emerging Church Conference."*
- 15. The E.C.C. was such a success that Mr. Mark returned in 2006 for "Revival in Belfast II" and was scheduled to be back in 2007 along with Pastor Paul Reid. Saint John's has the largest Presbyterian Sunday school east of Montreal.*
- 16. In addition to Saint John's, Belfast is home to two other churches, namely, Saint Michael's Roman Catholic, and Wood Islands Presbyterian. Many residents of the community attend worship services in Charlottetown or Montague.*
- 17. Belfast's major recreational component to their community include, Belfast Rec Center which includes one ice surface, a community room, a canteen & a skate sharpening service; Belfast Highland Greens, a 9-hole golf course Belfast Community Pool which includes two outdoor pools, a kiddy pool and canteen services, as well as a softball field beside the rink. Belfast is also home to a community-operated campground at Lord Selkirk Provincial Park.*
- 18. One of the region's major employers is Northumberland Ferries, which operates a terminal in Wood Islands. This ferry service, which connects Prince Edward Island to Caribou, Nova Scotia, was first established in 1941. Two ferryboats, the MV Confederation and MV Holiday Island, currently service the route.*
- 19. Students in the area attend Belfast Consolidated School. From grade 10 through grade 12, they attend Montague Regional High School. Both schools are administered by P.E.I.'s English Language School Board.*
- 20. Belfast is part of the provincial electoral district of Belfast-Murray River.*
- 21. Currently the Member of the Legislative Assembly of Prince Edward Island is Progressive Conservative Darlene Compton.*

***Spread the love***



<http://tonsoffacts.com/21-interesting-and-awesome-facts-about-belfast-prince-edward-island-canada/>



**Above: St. John's Presbyterian Church,  
Belfast, Prince Edward Island, Canada**

**ST. JOHN'S PRESBYTERIAN CHURCH  
BELFAST CHURCH**

<https://www.historicplaces.ca/en/rep-reg/place-lieu.aspx?id=15790>

**CONSTRUCTION DATE(S)**

**1824/01/01**

**LISTED ON THE CANADIAN REGISTER: 2010/02/19**

Located in a pastoral setting in Belfast, this wood framed church is one of the oldest Presbyterian houses of worship in the province. The unique church occupies its original footprint and has many original features including a four stage entrance tower with bell and weathervane. The gable roof has eave returns and the wood shingled exterior has various sized pointed arch Gothic windows with tracery.

**HERITAGE VALUE**

This early 19th century rural church is valued for its historic association with the pioneer Selkirk settlers of Belfast; for its well preserved Neoclassical architectural style; and for its contribution to the community.

The Scottish pioneers who established the church arrived in 1803 aboard the "Polly" which anchored off the coast. Others came later on the "Dykes" which landed in Charlottetown and the "Oughton" which arrived in Georgetown. Most of the settlers were from the Isle of Skye and had been personally sponsored by Lord Selkirk who was one of the few lairds who tried to improve the lives of their clansmen during the time of the Highland Clearances.

The efforts of Dr. Angus MacAulay, a lay preacher and medical doctor, was instrumental in helping to establish the first church (a log structure) in 1804. MacAulay also served as the agent for Selkirk in PEI and had been a chaplain in the British Army.

MacAulay tended to the spiritual needs of the settlers until 1822, when he was replaced by the Rev. John MacLennan, the first full time minister in the congregation.

During the early years of MacLennan's ministry, it was decided that a new church was needed. Members of the congregation had become familiar with Robert Jones, a ship joiner and lumber surveyor who had been operating Lord Selkirk's lumber mill on the Pinette River near Belfast since 1815. When the project to build the new church was advertised in the Island Register in 1824, Jones applied for the job and was successful.

The Neoclassical design Jones created has aspects which resemble the work of Sir Christopher Wren in London, England. The multi-staged tower, for instance, is purely Wren-like in its design. Jones kept a meticulous diary of his work on the church which is still in the possession of his descendants.

Some aspects of the design were added later such as the bell in the 1830s and the spire in the 1860s. Six of the original nine windows are original, as are the double front doors and the interior balcony. The building was re-shingled in 1856 and in 1934 stained glass was added to the large window in the east elevation.

The Scottish traditions of the congregation remained strong with services being conducted in both English and Gaelic into the 20th century. In 1903, a commemorative monument to the

Selkirk pioneers was erected on the church grounds. The congregation voted to remain Presbyterian at the time of Church Union in Canada in 1925.

Today, the well-preserved church is a landmark in the community and a significant cultural resource in the province.

Source: Culture and Heritage Division, PEI Department of Tourism and Culture,  
Charlottetown, PE C1A 7N8

File #: 4310-20/K11

### **CHARACTER-DEFINING ELEMENTS**

The heritage value of the church is shown in the following character-defining elements:

- the wood frame and wood shingle cladding
- the gable roof with eave returns
- the four-stage entrance tower with bell and tapered spire topped by a weathervane
- the various sized pointed arch Gothic windows with tracery
- the hood moulding of the windows
- the location of the church in a rural setting near its cemetery

CHAPTER TWO

**LOT 62, PRINCE EDWARD ISLAND, CANADA**

**THE NEW HOME FOR SOME OF THE STEWART CLAN FROM  
THE ISLE OF SKYE, SCOTLAND**



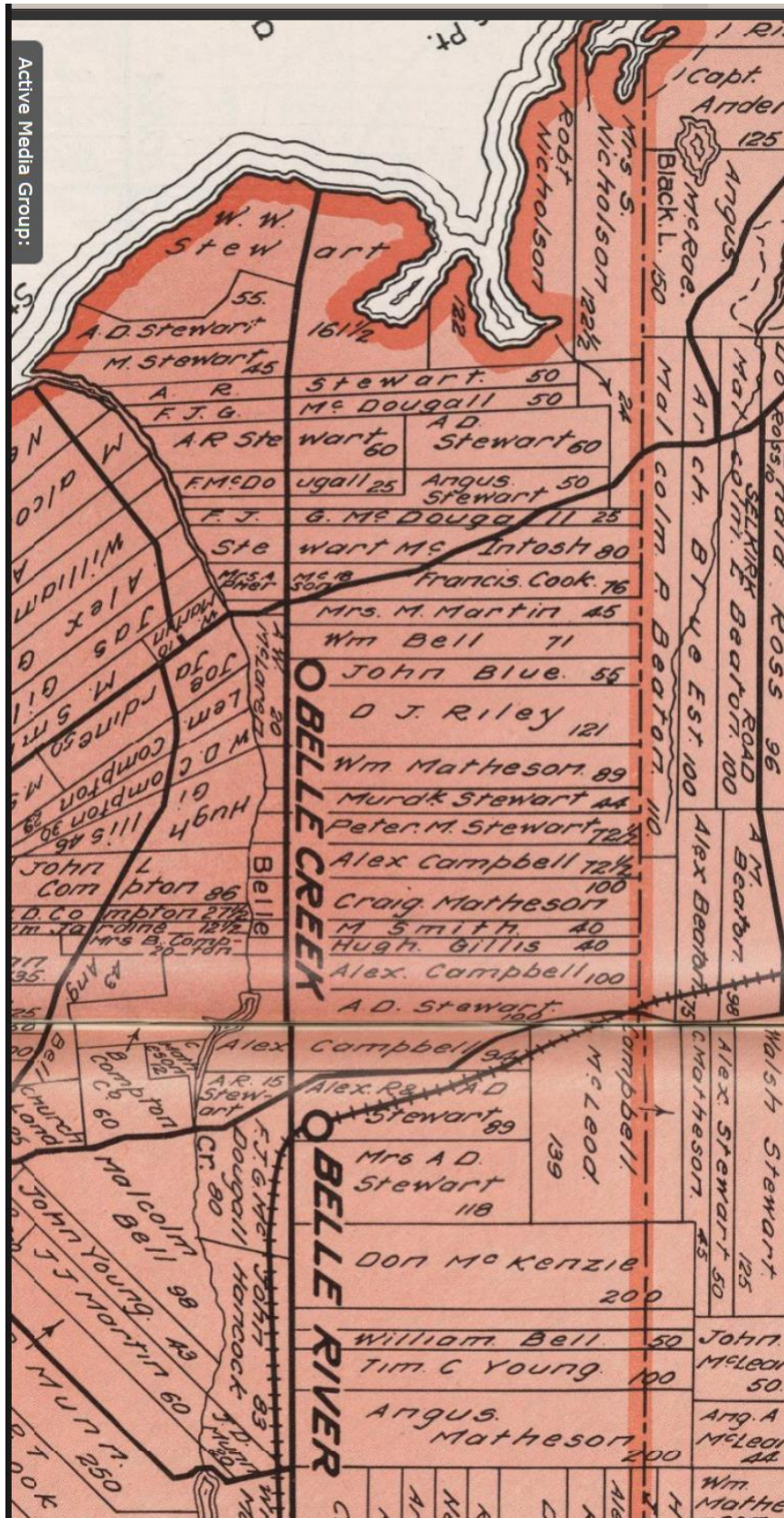
**Lot 62 is an allotment in Queens County, Prince Edward Island, part of St. John's Parish. Lot 62 was awarded to Richard Spry, Esquire, in the 1767 Land Lottery, and came to be settled through the efforts of Thomas Douglas, The 5th Earl of Selkirk in 1803.**

**BELOW FEATURED IN RED. LOT 62**

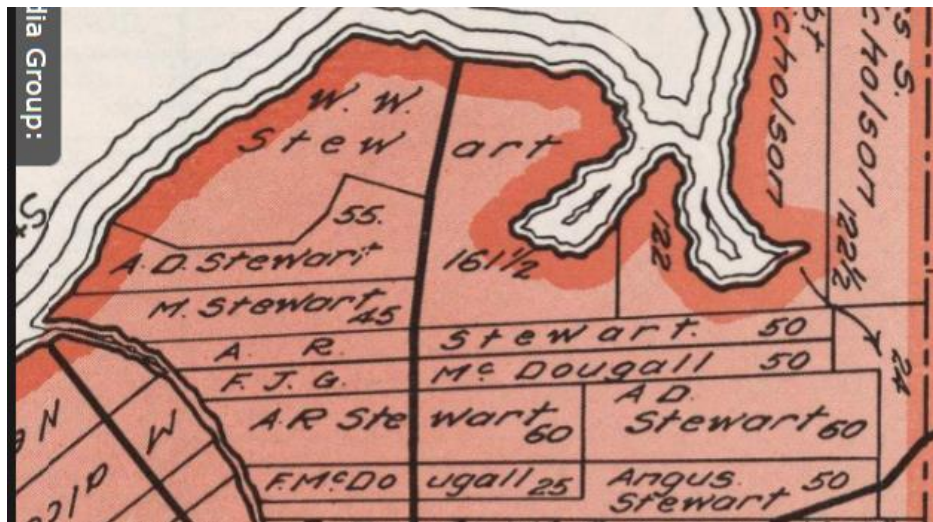




## Lots 60 and 62



Part of lot 62 showing the Stewarts plots...



**Part of lot 62 showing the Stewarts plots...**

(See **M Stewart** being Malcolm and his wife Mary, your direct great x grandparents)

## THEN THERE WAS THE EXODUS

All the plots were settled on Prince Edwards Island pre-1850. People were having countless children. The children were growing up and there was no more land. No doubt one of the reasons behind the decision made by the son of **Malcolm and Mary Stewart** and other settlers' sons and daughters to migrate to New Zealand and other colonial settlements which included Australia. Another push would have been the winters, they were very cold and bitter.

**The Reverend, Mr Norman McLeod** and his family started this exodus by leaving Pictou, a small seaside village on Nova Scotia which was right opposite lot 62 on Prince Edward Island. There was just a narrow band of sea between the two.

McLeod and family set sail on the good ‘*Barque Margaret*’ during 1851 for Adelaide, Australia. This did not prove very fruitful and so in 1854, McLeod and his people migrated to New Zealand, and finally settled in the district of Waipu. News went back to the people of Prince Edward Island and Nova Scotia, Canada. “If you want to own some soil where the weather is kindly come to New Zealand”

McLeod's story gives us an overall insight into the Exodus from Scotland to Canada and then to NZ...

*During 1817 there came to Pictou, Nova Scotia, Canada, the Rev. Norman McLeod with a following of coreligionists from Assynt, Scotland. McLeod was a man of pronounced views regarding religion, an exacting Presbyterian, and to his followers he was preacher, teacher,*

leader and patriarch. In 1819, he received a call from a settlement of Highlanders in Ohio to come and be their minister. He accepted the invitation but being loath to abandon his attached followers in Pictou, he decided to take them with him. The problem of making the journey to Ohio was debated, and it was finally decided to there by water via the Gulf of Mexico and the Mississippi River. Accordingly, and with characteristic energy, McLeod began the construction of a vessel large enough to carry the emigrants and their effects, and the keel of this craft was laid at Middle River Point, Pictou, in the summer of 1819. The people of Pictou regarded the project with derision, and nick-named the vessel the "Ark." The Ark was launched in the spring of 1820, and in May she took her passengers aboard and set sail for the Gulf of Mexico. After passing through the Straits of Canso, the Ark met a heavy S.W. gale, which drove her up the Cape Breton coast. A shift of wind sent the vessel into St. Ann's harbour, Cape Breton, and they dropped anchor there. Their experiences during the gale sickened the emigrants of the Ohio idea, and they decided to settle in St. Ann's. Land was granted to Mr. McLeod, and a community sprang up around the minister's residence at Black Cove.

McLeod remained ministering to his flock amidst the Cape Breton hills, working with them in their daily labours and ruling them with a rod of iron. In 1847, the minister received a letter from his son Donald, who had settled in Adelaide, Australia. Donald McLeod was a shipmaster who had left St. Ann's eight years before in charge of a vessel built there. He took the craft to Glasgow, sold her there, and after remitting the proceeds, dropped out of sight until news of him came in his letter. In this epistle, Donald told of the mild climate of Australia, the natural resources and wonderful opportunities awaiting settlers.

A failure of the potato crop inspired McLeod and his flock with the idea of making a shift to Australia. Though 70 years of age at the time, the minister caused the keel of a barque to be laid, and the work of building her was undertaken by the congregation. In 1851, the barque Margaret, 236 tons, was launched and rigged, and on October 28th, 1851, she sailed out of St. Ann's Harbour bound for Adelaide, with the Rev. Mr. McLeod and 135 emigrants on board. A call was made at St. Jago, Cape Verde Islands, and also at Cape Town, for the replenishing of supplies. On April 10th, 1852, the Margaret arrived at Adelaide, after a voyage of 164 days.

South Australia proved a disappointment to the emigrants. It was not suitable for farming owing to the severe droughts, so in 1854, McLeod and his people migrated to New Zealand, and finally settled in the district of Waipu, where they found all that their hearts desired. Urgent calls to come out to New Zealand were sent to those who had remained in St. Ann's, and in response to these invitations some 750 persons left Cape Breton and joined the Waipu colony, making the voyage to New Zealand in vessels built by themselves.

Norman McLeod passed away in the midst of his followers in March, 1866, aged 86 years. He was a man of great physical strength, strong mentally and spiritually, and he wielded a tremendous influence over his people. His name is greatly honoured in the Waipu settlement, and a splendid monument was erected in 1914 at Waipu to the memory of McLeod and those who followed him.

Many in New Zealand the seafaring instinct that entered their blood through their sojourn in Nova Scotia inspired them to build sailing ships and boats and to engage in fishing and ocean trading, causing it to be said in after years "that Waipu sent out, for its size, more sea-captains than any other community in New Zealand."

*The other vessels which participated in the migration were the 'Highland Lassie', 'Gertrude, Spray', 'Breadalbane' and 'Ellen Lewis'.*

**LINKS...**

*Waipu Pioneer Memorial Settler's Museum: History*

*The St. Ann's-Baddeck/Waipu Twinning Society*

*Rev.Mac Leod's Starting Point in Stoer, Assynt Parish*

*Waipu150 – FAQ*

*Waipu150 – History*

*Nova Scotian Settlers in N.Z*

*Maritime Provinces to New Zealand*

*The History of the Presbyterian Church in St Ann's*

*WAIPU Pioneer Collection (A484)*

*Immigrant Ships to New Zealand 1835-1910*

*The Story of the Waipu Settlement, North Auckland*

*The Gaelic College of Cape Breton*

*Stories of Waipu Pioneers*

*The Outlook September 23, 1929*

*Asainteach bound for Waipu anniversary games*

*The History of the Presbyterian Church in St. Ann's*

*Photos of The Archaeological Dig at St. Ann's Gaelic College – June 2002*

*The History of the Presbyterian Church in St Ann's*

*McLeod to McWilliam*

*Presbytery of Cape Breton, Baddeck*

*Margaret 1851-52, Highland Lass 1852, Gertrude 1856, Spray 1857, Breadalbane 1857-58,*

*Ellen Lewis 1859-60*

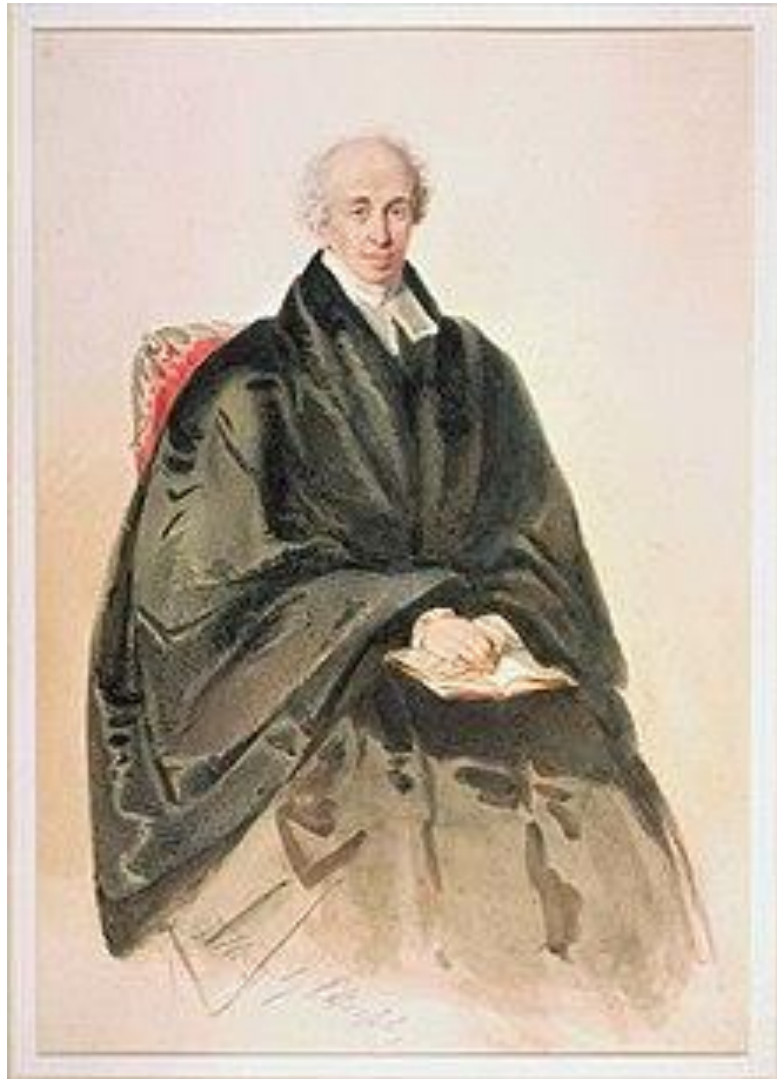
*Buried Romance at St. Ann's- Cape Breton Island*

*Waipu House of Memories*

*The story of Mary McLeod*

*The Foundation of Waipu, New Zealand*

*Waipu Heritage Centre -- Genealogy interest here*



*A portrait of McLeod, executed by [Charles Heaphy](#)*

CHAPTER THREE

**FIRST KNOWN ANCESTORS FOR THIS THREAD OF THE 'STEWART FAMILY' WHO HAD  
LIVED ON THE ISLE OF SKYE, SCOTLAND FOR CENTURIES  
(THEY HAD THE VIKING BLOOD)**

**(PADRAIG STIUBHAIRT AND CAIRISTIONA NICMHAOLAIN)**

**THREE X GREAT GRANDPARENTS FOR JOHANNA THOMAS-MAUDE**

*Note: Historically, Skye was overwhelmingly Gaelic speaking, but this changed between 1921 and 2001. In both the 1901 and 1921 censuses, all Skye parishes were more than 75 per cent Gaelic-speaking.*

**THE GAELIC FORM**

**PERHAPS THEY WOULD HAVE ADDRESSED THE WORLD THUS  
IN THE 'GAELIC'...**

**Ainm - Peter Stewart**

**Ainm sa Ghàidhlig - Pàdraig Stiùbhart**

**Far-ainm - Pàdraig beag**

**Ainm eile -**

**Sloinneadh -**

**Gnè - Fireann**

**Bliadhna breith -**

**Bliadhna bàis - 1978**

**Sgìre thùsail**

**Siorrachd - Ros is Cromba**

**Eilean -**

**Paraiste - Loch Aillse**

**Baile/Àite -**

**Fiosrachadh beatha -? -1968**

Bha Padraig Stiùbhart a' fuireach ann an Allt Bheithe. Bha e ag obair ann an taighean-òsda.

**Àireamh an neach** - 9892 - Faic a h-uile clàr far a bheil an neach seo a' nochdadh mar fhiosraiche no neach-clàraidh.

Bruth Command/Cmd/Apple + D airson an duilleag seo a chur gu comharra-lìn.

**PADRAIG STIUBHAIRT**

**MALE**

Padraig **Stiubhairt** was born at Isle of Skye, Inverness-shire, Scotland

He died at Isle of Skye, Inverness-shire, Scotland

Padraig Stiubhairt was also known as Patrick Stiubhairt. Padraig Stiubhairt was also known as Peter Stiubhairt.

He married Cairistiona **NicMhaolain** at Isle of Skye, Inverness-shire, Scotland.

**FAMILY:**

**CAIRISTIONA NICMHAOLAIN**

Tearlach **Stiubhairt** b. c 1760, d. 27 Sep 1857

Aonghas **Stiubhairt** b. c 1765, d. b Nov 1838

**CITATIONS**

[S1079] Paulsen Ahnentafel, online [http://genealogy-paulsen.com/Paulsen\\_Ahnentafel/AT\\_TOC.HTM](http://genealogy-paulsen.com/Paulsen_Ahnentafel/AT_TOC.HTM)

**CAIRISTIONA NICMHAOLAIN**

**FEMALE**

Cairistiona **NicMhaolain** married Padraig **Stiubhairt** at Isle of Skye, Invernessshire, Scotland

Cairistiona NicMhaolain died at Isle of Skye, Invernessshire, Scotland.

She was born at Isle of Skye, Invernessshire, Scotland

Her married name was Stiubhairt

Cairistiona NicMhaolain was also known as Christina MacMillan

**FAMILY: PADRAIG STIUBHAIRT**

Tearlach **Stiubhairt** b. c 1760, d. 27 Sep 1857

Aonghas **Stiubhairt** b. c 1765, d. b Nov 1838

**CITATIONS**

1. [S1079] Paulsen Ahnentafel, online [http://genealogy-paulsen.com/Paulsen\\_Ahnentafel/AT\\_TOC.HTM](http://genealogy-paulsen.com/Paulsen_Ahnentafel/AT_TOC.HTM)

## PATRICK STEWART AND CHRISTINA MACMILLAN

*Generation one: Peter and Christina*

### THE ENGLISH FORM

*Note: Little is known about **Pàdraig Stiubhairt** and his wife **Cairistìona NicMhaolain**. They most likely remained in Scotland and probably died in the parish of Portree, Isle of Skye. **Pàdraig Stiubhairt** was most likely a sheep herder (a Croft farmer) and or a fisherman. Like their son **Domhnall**, they may have lived at Mugarry which is located in the hills above the town of Portree.*

### GENERATION ONE

**Patrick (Padraig)** was born about: 1720

At: Sconser, Isle of Skye, Scotland

Died about: 1790

At: Sconser, Isle of Skye, Scotland

Married about: 1755/1760

At: Portree, Isle of Skye Scotland

To: **Christina MacMillan (Cairistiona NicMhaolain)**

Her married name was **Stiubhairt**

She was born about: 1725

At: Isle of Skye, Inverness-shire, Scotland

Died about:

At: Isle of Skye, Inverness-shire, Scotland.

**They had the following children...**

**1/. Sarah Stewart 1755**

**Has been mentioned in family folk law but no official records**

**2/. Charles STEWART  
was born about 1760**

**3/. Donald STEWART  
was born about 1762**

**4/. Malcolm STEWART  
was born about 1763**

**5/. Angus STEWART  
was born about 1765**

**6/. Peter STEWART  
was born about 1770**

CHAPTER FOUR

**CHILDREN OF PETER STEWART AND CHRISTINA MCMILLAN**

*Please note: The two separate spellings for this family Stewart or Stuart on Prince Edward Island Canada... The compiler has used these separate names when referring from official records. Which ever way the spelling. Stewart and or Stuart are both the same family in this journal...*

**1/. SARAH STEWART 1755**

**SARAH HAS BEEN MENTIONED IN FAMILY FOLK LAW BUT NO RECORDS FOUND**

**2/. CHARLES STUART/STEWART AND MARY MCMILLAN**

*Generation one: Peter and Christina. Generation two: Charles and Mary*

**GENERATION TWO**

**Charles** was born about 1760 and died 27 Sep 1850

*Note: Charles and his wife were early Selkirk settlers who landed at Belfast Cove, Prince Edward Island, Canada in 1803 from the Isle of Skye, Scotland...*

**SEE PAGE 85 FOR FULL GENEALOGY FOR CHARLES STEWART AND MARY MCMILLIAN**

**DIRECT DESCENDANTS FOR JOHANNA THOMAS-MAUDE**

**CHAPTER FIVE**

**3/. DONALD STEWART AND CATHERINE MORRISON**

*Generation one: Peter and Christina. Generation two: Donald and Catherine*

**GENERATION TWO**

**Donald** was born about: 1763

At: Parish of Portree, Isle of Skye, Scotland

Died about: 29 June 1857

At: Belle Creek, Prince Edward Island, Canada

Buried: Lot 58, St John's Presbyterian Church Cemetery Belfast, Prince Edward Island

Married about: Late 1790's?

At: Portree, Isle of Skye, Scotland

To: **Catherine Morrison**

She was born about: 1773

At: Parish of Portree, Isle of Skye, Scotland

Died about:

At: Prince Edward Island

Buried: Lot 58, St John's Presbyterian Church Cemetery Belfast, Prince Edward Island

They had the following children...

**1/. Allan**

**2/. Alexander**

**3/. Ronald**

**4/. Malcolm**

**5/. Murdoch**



*INSCRIPTION*

In Memory of Donald Stewart  
died June 29, 1857, aged 94 years  
Also his wife Catherine  
died April 8, 1861  
Aged years  
Also their son

<https://www.findagrave.com/memorial/171898585/donald-stewart>

**CATHERINE MORRISON STEWART**

**BIRTH** 1773  
Isle of Skye, Highland, Scotland

**DEATH** 8 Apr 1861 (aged 87–88)  
Belle River, Queens County, Prince Edward Island, Canada

**BURIAL** Saint John's Presbyterian Cemetery  
Belfast, Queens County, Prince Edward Island, Canada

**MEMORIAL ID** 171898648 · [View Source](#)

**DONALD STEWART**

**BIRTH** 1762  
Isle of Skye, Highland, Scotland

**DEATH** 29 Jun 1857 (aged 94–95)  
Belle River, Queens County, Prince Edward Island, Canada

**BURIAL** Saint John's Presbyterian Cemetery  
Belfast, Queens County, Prince Edward Island, Canada

**MEMORIAL ID** 171898585 · [View Source](#)

CHAPTER SIX

**CHILDREN OF DONALD STEWART AND CATHERINE MORRISON**

**1/. ALLAN STEWART AND (SARAH) MARION STEWART.  
(FIRST COUSINS)**

*Generation one: Peter and Christina. Generation two: Donald and Catherine.*

*Generation three: Allan and Sarah*

**GENERATION THREE**

**Allan** was born about: 1799

At: Isle of Skye, Highland, Scotland

Died about: 1 November 1878

At: Belle River, Queens County, Prince Edward Island

Buried: Saint John's Presbyterian Church, Belfast, Queens County,  
Prince Edward Island, Canada

Married about:

At:

To: **Sarah Marion Stewart (Maiden name)**

She was born about: 1809

At: Scotland

Died about: 14 September 1864

At: Belle River, Queens County, Prince Edward Island, Canada

Buried: Saint John's Presbyterian Church, Belfast, Queens County,  
Prince Edward Island, Canada

They had the following children...

**GENERATION FOUR**

**1/. Christy Baptised 1834**

**2/. John Baptised 1836**

**3/. Donald Baptised 1837**

**4/. Catherine Baptised 1840**

**5/. Mary Baptised 1843**

**All Baptised at Belfast, Prince Edward Island, Canada**

Following records from [familysearch.org](https://familysearch.org)

**Allan Stewart**

Father

Canada, Prince Edward Island Baptism Card Index, 1721-1885

**Spouses** Marion Stewart

**Children** Christy Stewart

**Alan Stewart**

Father

Canada, Prince Edward Island Baptism Card Index, 1721-1885

**Spouses** Marion Stewart

**Children** John Stewart

**Alan Stewart**

Father

Canada, Prince Edward Island Baptism Card Index, 1721-1885

**Spouses** Marion Stewart

**Children** Catharine  
Stewart

**Alan Stewart**

Father

Canada, Prince Edward Island Baptism Card Index, 1721-1885

**Spouses** Marion Stewart

**Children** Donald Stewart

**Alan Stewart**

Father

Canada, Prince Edward Island Baptism Card Index, 1721-1885

**Spouses** Marion Stewart

**Children** Mary Stewart



**MEMORIAL FOR ALLAN STEWART AND  
SARAH. SARAH KNOWN AS MARION  
STEWART**

BIRTH	1809 Scotland
DEATH	14 Sep 1864 (aged 54–55) Belle River, Queens County, Prince Edward Island, Canada
BURIAL	<u>Saint John's Presbyterian Cemetery</u> Belfast, Queens County, Prince Edward Island, Canada
MEMORIAL ID	171898944 · <a href="#">View Source</a>

**ALLAN STEWART**

BIRTH	1799 Isle of Skye, Highland, Scotland
DEATH	1 Nov 1878 (aged 78–79) Belle River, Queens County, Prince Edward Island, Canada
BURIAL	<u>Saint John's Presbyterian Cemetery</u> Belfast, Queens County, Prince Edward Island, Canada
MEMORIAL ID	171898906 · <a href="#">View Source</a>

## 2/. ALEXANDER STEWART AND CATHERINE MARTIN

*Generation one: Peter and Christina. Generation two: Donald and Catherine.*

*Generation three: Alexander and Catherine Martin*

### GENERATION THREE

**Alexander** was born about: 16 August 1802

At: Mugeary, Parish of Portree, Isle of Skye, Scotland

Died about: 10 April 1841 (**Age only 38**)

At: Prince Edward Island, Canada

Married about: 1832

At: Orwell Bay, Queens, Prince Edward Island, Canada

To: **Catherine Martin**

She was born about: 1807

At: Orwell, Queens, Prince Edward Island, Canada

Died about:

At: Prince Edward Island, Canada

They had the following child

1/. Catherine Baptised 1 March 1833

2/. Margaret Baptised 23 Feb 1836

3/. Flora Baptised 23 March 1839

4/. Christy Baptised 23 June 1840

**All Baptised at Belfast Prince Edward Island Canada**

Following records from **familysearch.org**

#### **Alexander Stewart**

Father

Canada, Prince Edward Island Baptism Card Index, 1721-1885

**Spouses** Catharine Martin

**Children** Christy Stewart

#### **Alexander Stewart**

Father

Canada, Prince Edward Island Baptism Card Index, 1721-1885

**Spouses** Catharine Martin

**Children** Flora Stewart

#### **Alexander Stewart**

Father

Canada, Prince Edward Island Baptism Card Index, 1721-1885

**Spouses** Catharine Martin

**Children** Catharine Stewart

#### **Alexander Stewart**

Father

Canada, Prince Edward Island Baptism Card Index, 1721-1885

**Spouses** Catharine Martin

**Children** Margaret Stew

#### **Alexander Stewart**

Principal

Canada, Prince Edward Island Death Card Index, 1721-1905

**Death** 1859

Prince Edward Island, Canada

## MEMORIAL FOR ALEXANDER

<b>BIRTH</b>	16 Aug 1802 Isle of Skye, Highland, Scotland
<b>DEATH</b>	10 Apr 1841 (aged 38)
<b>BURIAL</b>	Burial Details Unknown
<b>MEMORIAL ID</b>	187905080 · <a href="#">View Source</a>

<https://www.findagrave.com/memorial/187905080/alexander-stewart#source>



**MARGARET**  
**CHILD OF ALEXANDER STEWART**  
**AND CATHERINE MARTIN**

**MARGARET MARRIED ANGUS STEWART. THEY LIVED**  
**OUT THEIR LIVES AT KAIWAKA, NEW ZEALAND**

**SEE JOURNAL FIVE. PART TWO**

**ABERCROMBIE-THOMAS-WALLIS-STEWART**  
**GENEALOGIES**

**FOR FULL NEW ZEALAND THREADS FOR THIS**  
**COUPLE. MARGARET AND ANGUS STEWART.**

<b>BIRTH</b>	18 Sep 1835 Pinette, Queens County, Prince Edward Island, Canada
<b>DEATH</b>	11 Jan 1925 (aged 89) Auckland, New Zealand
<b>BURIAL</b>	<a href="#">Kaiwaka Cemetery</a> Kaiwaka, Kaipara District, Northland, New Zealand
<b>MEMORIAL ID</b>	183146675 · <a href="#">View Source</a>

Alexander Stewart's Spouses and Children

OPEN ALL

Margaret Stewart

Child

Name **Margaret Stewart**

Baptism Date **23 Feb 1836**

Baptism Place **Belfast, Prince Edward Island**

Father's Name **Alexander Stewart**

Mother's Name **Catharine Martin**

Entry Number **2**

Catharine Martin

Wife

F

SURNAME		CHRISTIAN NAMES	
Stewart		Margaret	
DATE OF BIRTH		PLACE OF BIRTH	
18 Sep. 1835		Pinette	
BAPTISMAL DATE		CLERGY OFFICIATING	
23 Feb. 1836		Rev. John McLennan	
FATHER'S NAME		MOTHER'S NAME	
Alexander Stewart		Catharine Martin	
LOCATION OF RECORD		RECORD BOOK No.	PAGE
St. Johns Pres. Ch., Belfast		2	91
DEPT. OF HEALTH DIVISION OF VITAL STATISTICS CHARLOTTETOWN, P.E. ISLAND		OFFLEY SYSTEMS CARD	

Name **Angus Stewart**

Sex **Male**

Spouse's Name **Margaret Stewart**

Spouse's Sex **Female**

Marriage Date **17 Feb 1858**

Marriage Place **Prince Edward Island, Cana**

235

Names of Parties.	Whether Bachelor or Widower, Spinster or Widow.	Date of Celebration.	By License or Banns.	Names of Witnesses.
Angus Stewart Margaret Stewart	B S	17 Feb 1858	License	John Stewart Allan Stewart

I hereby certify that the above named Parties were married by me this day

Recorded 27 July 1859

B. H. H. H. H.

in the presence of the above named Witnesses

Alex. McKay, Belfast

Names of Parties.	Whether Bachelor or Widower, Spinster or Widow.	Date of Celebration.	By License or Banns.	Names of Witnesses.
-------------------	---	----------------------	----------------------	---------------------

### 3/. RONALD STEWART AND FLORA MATHESON

*Generation one: Peter and Christina. Generation two: Donald and Catherine.*

*Generation three: Ronald and Flora*

#### GENERATION THREE

**Ronald** was born about: 15 June 1803

At: Isle of Skye, Scotland

Died about: 23 December 1901

At: Belle River, Queens County, Prince Edward Island, Canada

Buried: Saint John's Presbyterian, Belfast, Queens County, Prince Edward Island, Canada

Married about: 12 March 1834

At: Prince Edward Island, Canada

To: **Flora Matheson**

She was born about: 1807

At: Scotland

Died about: 14 June 1902

At: Belle River, Queens County, Prince Edward Island, Canada

Buried: Saint John's Presbyterian, Belfast, Queens County, Prince Edward Island, Canada

They had the following children...

1/. **Allan. R**

2/. **Catherine (Beaton)**

3/. **Janet Stewart m Stewart**

4/. **Donald**

5/. **Mary**

6/. **Margaret**

Following records from **familysearch.org**

#### **Ronald Stewart**

Groom

Canada, Prince Edward Island Marriage Registers, 1832-1888

**Marriage** 12 March 1834

Prince Edward Island, Canada

**Spouses** Flora Matheson

#### **Ronald Stewart**

Father

Canada, Prince Edward Island Baptism Card Index, 1721-1885

**Spouses** Flora Matheson

**Children** Donald Stewart

#### **Ronald Stewart**

Father

Canada, Prince Edward Island Baptism Card Index, 1721-1885

**Spouses** Flora Matheson

**Children** Mary Stewart

**Ronald Stewart**

Father

Canada, Prince Edward Island Baptism Card Index, 1721-1885

**Spouses** Flora Matheson

**Children** Catharine Stewart

**Ronald Stewart**

Father

Canada, Prince Edward Island Baptism Card Index, 1721-1885

**Spouses** Flora Matheson

**Children** Alexr Stewart

**1881 CANADA CENSUS**

Name	Ronald Stewart
Sex	Male
Age	76
Event Date	1881
Event Place	Lot 62, Queens, Prince Edward Island, Canada
Sub-District	Lot 62
Sub-District Number	V
District Number	2
Birth Date	1805
Birthplace	Scotland
Marital Status	Married
Occupation	Farmer

Race	<b>Scottish</b>
Nationality	<b>Scotch</b>
Religion	<b>C. Presbyterian</b>
Head of Household Name	<b>Ronald Stewart</b>
Event Type	<b>Census</b>
Family Number	<b>8</b>

Other People on This Record

OPEN ALL

[Flora Stewart](#)

F

72

Scotland

[Alexander Stewart](#)

M

37

Prince Edward Island

[Catharine Stewart](#)

F

27

Prince Edward Island

[Allan Stewart](#)

M

24

Prince Edward Island

[Margaret M. Stewart](#)

F

8/12

Prince Edward Island

[John Stewart](#)

M

12

Prince Edward Island

## MEMORIALS FOR RONALD AND FLORA



### RONALD STEWART

<b>BIRTH</b>	15 Jun 1803 Isle of Skye, Highland, Scotland
<b>DEATH</b>	23 Dec 1901 (aged 98) Belle River, Queens County, Prince Edward Island, Canada
<b>BURIAL</b>	<u>Saint John's Presbyterian Cemetery</u> Belfast, Queens County, Prince Edward Island, Canada
<b>MEMORIAL ID</b>	187905157 · <a href="#">View Source</a>

### FLORA MATHESON STEWART

<b>BIRTH</b>	1807 Scotland
<b>DEATH</b>	14 Jun 1902 (aged 94–95) Belle River, Queens County, Prince Edward Island, Canada
<b>BURIAL</b>	<u>Saint John's Presbyterian Cemetery</u> Belfast, Queens County, Prince Edward Island, Canada
<b>MEMORIAL ID</b>	187905198 · <a href="#">View Source</a>

## CHILDREN OF RONALD STEWART AND FLORA MATHESON

### 1/. ALLAN. R. STEWART DIED 1889

*Generation one: Peter and Christina. Generation two: Donald and Catherine.*

*Generation three: Ronald and Flora. Generation four: Allan and*

### GENERATION FOUR



**2/. CATHERINE STEWART (BEATON)**

*Generation one: Peter and Christina. Generation two: Donald and Catherine.*

*Generation three: Ronald and Flora. Generation four: Catherine and Jonathan*

**GENERATION FOUR**

**MEMORIAL**

**CATHERINE STEWART BEATON**

<b>BIRTH</b>	14 Dec 1834 Belle River, Queens County, Prince Edward Island, Canada
<b>DEATH</b>	19 May 1928 (aged 93) Kings County, Prince Edward Island, Canada
<b>BURIAL</b>	<u>Valleyfield Cemetery</u> Kings County, Prince Edward Island, Canada
<b>MEMORIAL ID</b>	191379906 · <a href="#">View Source</a>

Name Catharine Stewart  
Birth Date 14 Dec 1834  
Birthplace Lot 67  
Baptism Date 1 Mar 1835  
Baptism Place Prince Edward Island, Canada  
Father Ronald Stewart  
Mother Flora Matheson

*INSCRIPTION*

JONATHAN BEATON  
1826-1916  
HIS WIFE  
CATHERINE STUART  
1834-1928

BEATON

**3/. JANET STEWART AND DONALD STEWART**

*Generation one: Peter and Christina. Generation two: Donald and Catherine.*

*Generation three: Ronald and Flora. Generation four: Janet and Donald*

**GENERATION FOUR**

**MEMORIAL**





**MRS. STEWART DEAD FROM 'FLU' ATTACK**

*Mrs. Janet Stewart, 88, wife of the late Donald S. Stewart are resident of Stewartsdale for 46 years, died at her home of influenza at 4 p.m. yesterday after being ill for a few days.*

*Stewartsdale was named for Mrs. Stewart's late husband.*

*Funeral services will be conducted at the Stewartsdale Presbyterian church at 2 p.m. tomorrow with Rev. E. E. Matteson, pastor of the Wilton Presbyterian church officiating. Rev. Matteson will be assisted by Rev. Gulson, pastor of the Presbyterian church at Glencoe.*

*Burial will be made at the Stewartsdale cemetery.*

*Mrs. Stewart came to the locality which was later named Stewartsdale on the day in 1882 when the first railroad train crossed the Missouri river. Her husband died in 1923.*

*She was born in Bell River, Prince Edward Island, Canada in 1840.*

*She leaves two sons, John R. and Angus, and one daughter, Mrs. D. A. McLean. The children reside at Stewartsdale.*

*Members of her immediate family will attend the funeral services.*

*\*\*The Bismarck, Tribune, Friday, December 28, 1928, Page 1.*

**Inscription**

**Mother**

**4/. DONALD STEWART**

*Generation one: Peter and Christina. Generation two: Donald and Catherine.*

*Generation three: Ronald and Flora. Generation four: Donald and*

**GENERATION FOUR**

**No records**

**5/. MARY**

*Generation one: Peter and Christina. Generation two: Donald and Catherine.*

*Generation three: Ronald and Flora. Generation four: Mary and*

**GENERATION FOUR**

**No records**

**6/. MARGARET STEWART AND PETER MACINTOSH**

*Generation one: Peter and Christina. Generation two: Donald and Catherine.*

*Generation three: Ronald and Flora. Generation four: Margaret and Peter.*

**GENERATION FOUR**

**MEMORIAL**



**MARGARET STEWART MACINTOSH**

<b>BIRTH</b>	1852
<b>DEATH</b>	1907 (aged 54–55)
<b>BURIAL</b>	<u>Saint John's Presbyterian Cemetery</u> Belfast, Queens County, Prince Edward Island, Canada
<b>PLOT</b>	C243
<b>MEMORIAL ID</b>	208480646 · <a href="#">View Source</a>

~ 59 ~

## Spouse



## Peter MacIntosh

1848–1926

## Children



## Mary Ann MacKintosh

1875–1951



## Ronald Allan MacKintosh

1877–1946



## Flora Margaret MacIntosh

1879–1894



## Jessie MacKintosh

1881–1958



## Elizabeth Jane MacIntosh

~ 60 ~

1884–1886



**Elizabeth Jane MacIntosh**

1886–1914



**Joseph M MacIntosh**

1889–1889



**Kathryn M *MacKintosh* Belyea**

1891–1980



**Samuel Stewart MacKintosh**

1894–1960

#### **4/. MALCOLM STEWART AND ELIZABETH (BETTY) NICHOLSON AND MARY STEWART**

*Generation one: Peter and Christina. Generation two: Donald and Catherine.*

*Generation three: Malcolm and Betty*

#### **GENERATION THREE**

**Malcolm** was born about: 1813

At: Lot 62, Belle River, Prince Edward Island, Canada

Died about: 1875

At: He passed away on **1875** and is **buried in Old Dundas Acorn Cemetery, Lot 55, PEI.**

Married about:

At:

To: **Betty Nicholson**

She was born about: 1825

At: Dundas, PEI.

Died about: 1901

At: PEI

**Some have said he later married Mary Stewart and had some of the following children...conjecture at this stage...**

**Betty and Malcolm** had the following children...

**1/. Catherine Stewart**

**1865 - 1939**

**2/. Christy Ann Stewart**

**1855 - Unknown**

**3/. John C Stewart**

**1854 - 1889**

**4/. Daniel Stewart**

**1866 - 1941**

**5/. Mary Sophia Stewart**

**1876 - 1936**

**6/. Alexander C Stewart**

**1856 - 1883**

**7/. Normena Lee Stewart**

**1873 - 1911**

**8/. Flora Stewart**

**1863 - Unknown**

**9/. Samuel Stewart**

**1861 - Unknown**

**10/. Christina Stewart**

**1870 - Unknown**

**11/. Norah G Stewart**

**1875 - Unknown**

**5/. MURDOCH STEWART AND MARY NICHOLSON**

*Generation one: Peter and Christina. Generation two: Donald and Catherine.*

*Generation three: Murdock and Mary*

**GENERATION THREE**

**Murdock** was born about: 1814

At:

Died about: 3 July 1880

At:

Married about:

At:

To: **Mary Nicholson**

She was born about:

At:

Died about:

At:

They had the following children...

- 1/.
- 2/.
- 3/.
- 4/.
- 5/.

**MEMORIAL FOR MURDOCK**



<b>BIRTH</b>	1814 Belle River, Queens County, Prince Edward Island, Canada
<b>DEATH</b>	3 Jul 1880 (aged 65–66) Belle River, Queens County, Prince Edward Island, Canada
<b>BURIAL</b>	<u>Saint John's Presbyterian Cemetery</u> Belfast, Queens County, Prince Edward Island, Canada
<b>MEMORIAL ID</b>	171900407 · <a href="#">View Source</a>

Family Members

**Parents**



**Donald Stewart**

1762–1857



**Catherine *Morrison* Stewart**

1773–1861

**Spouse**



**Mary *Nicholson* Stewart**

1826–1904

**Siblings**



**Allan Stewart**

1799–1878

**Alexander Stewart**

1802–1841



**Ronald Stewart**

1803–1901

~ 65 ~

**CHILDREN OF MURDOCK AND MARY**

**GENERATION FOUR**



**Alexander C Stewart**

1852–1886



**Catherine Margaret *Stewart* Stuart**

1855–1912



**JEMIMA STEWART MOORE**

1856–1931

**MEMORIAL FOR JEMMA**





<b>BIRTH</b>	3 May 1856 Prince Edward Island, Canada
<b>DEATH</b>	14 Mar 1931 (aged 74) Manchester, Hillsborough County, New Hampshire, USA
<b>BURIAL</b>	<u>Pine Grove Cemetery</u> Manchester, Hillsborough County, New Hampshire, USA
<b>PLOT</b>	Hillside Lawn, Lot 3396
<b>MEMORIAL ID</b>	171902291 · <a href="#">View Source</a>

**SOURCES:** U.S. Census records; New Hampshire death record; Hillsborough County NH cemetery record

Daughter of Murdock Stewart and Mary Nicholson

Wife of Henry W. H. Moore; married 1884

Lived in Manchester 44 years

Died of kidney disease; interred on 18 Mar 1931

**Gravesite Details**

Pine Grove Cemetery record #16,378

~ 67 ~

## Family Members

### Parents



### Murdoch Stewart

1814–1880



### Mary *Nicholson* Stewart

1826–1904

### Spouse



### Henry W. Holmes Moore

1863–1900

### Children



### Elizabeth Marion *Moore* Cree

1885–1917



### Walter Alexander Moore

1887–1906

### Lillian Stewart Moore

1888–1889

Flowers • 2

[Plant Memorial Trees](#)



May you rest in peace Jemima  
Left by [Judy](#) on 17 Apr 2018



Left by [DogMama08](#) on 28 Oct 2016

~ 69 ~

**CHRISTINA CAROLINE STEWART MCLEOD**

1857–1897



<b>BIRTH</b>	1857 Queens County, Prince Edward Island, Canada
<b>DEATH</b>	16 Nov 1897 (aged 39–40) Belfast, Queens County, Prince Edward Island, Canada
<b>BURIAL</b>	<u>Saint John's Presbyterian Cemetery</u> Belfast, Queens County, Prince Edward Island, Canada
<b>MEMORIAL ID</b>	189641902 · <a href="#">View Source</a>

Married Rev Alexander Angus McLeod 13 Aug 1890 Prince Edward Island, Canada.

Went to India as a missionary with husband. Returned to PEI 1897.

#### Inscription

In memory of  
Christina C Stewart  
Beloved  
Wife of  
Rev. A. A. McLeod  
of the Canadian  
Baptist Mission

India

Died Belle River  
Nov 16, 1897  
Age 40

#### Family Members

##### Parents



#### Murdoch Stewart

1814–1880



#### Mary Nicholson Stewart

1826–1904

~ 71 ~

**Spouse**



**Alexander Angus McLeod**

1852–1938 (m. 1890)

**Siblings**



**Alexander C Stewart**

1852–1886



**Catherine Margaret *Stewart* Stuart**

1855–1912



**Jemima *Stewart* Moore**

1856–1931



**Donald Stewart**

1863–1900

**Flowers**

**Plant Memorial Trees**



May you rest in peace Christy  
Left by [Judy](#) on 11 May 2018

[Leave a Flower](#)

CHAPTER SEVEN

**4/. MALCOLM STEWART AND FLORA CAMPBELL**

*Generation one: Peter and Christina. Generation two: Malcolm and Flora*

**GENERATION TWO**

**Malcolm** was born about: 1763

At: Sconsor, Parish of Portree, Isle of Skye, Scotland

Died about:

At:

Married about:

At: Isle of Skye, Scotland

To: **Flora Campbell**

She was born about:

At:

Died about:

At:

They had the following children...

**1/. Mary b. Abt. 1783,**

**Braes, Parish of Portree, Isle of Skye, Scotland; d. Ontario, Canada.**

**2/. Catherine STEWART, b.**

**Braes, Portree, Parish, Isle of Skye, Scotland; d. Parish of Portree, Isle of Skye, Scotland.**

**3/. Ann STEWART, b.**

**Braes, Parish of Portree, Isle of Skye, Scotland.**

**4/. Isabella STEWART, b.**

**Braes, Parish of Portree, Isle of Skye, Scotland; d. Isle of Skye, Scotland.**

**5/. Peter STEWART, b.**

**Braes, Parish of Portree, Isle of Skye, Scotland.**

**Notes for PETER STEWART:**

**Peter Stewart emigrated to Prince Edward Island**



## DESCENDANTS OF MALCOLM STEWART

NOTE: The descendants of MALCOLM STEWART are from a list sent to Murchisons in Canada in 1919 from Angus Murchison, Isle of Skye, Scotland. The marriage and birthdates are obtained from IGI - International Genealogical Index and Scotlands People.

### Generation No. 1

1. MALCOLM2 STEWART (RONALD1) was born Abt. 1763 in Sconser, Parish of Portree, Isle of Skye, Scotland, and died in Sconser, Parish of Portree, Isle of Skye, Scotland. He married Flora Campbell, Isle of Skye.

Children of MALCOLM STEWART and Flora Campbell are:

2. i. MARY3 STEWART, b. Abt. 1783, Braes, Parish of Portree, Isle of Skye, Scotland; d. Ontario, Canada.
3. ii. CATHERINE STEWART, b. Braes, Portree, Parish, Isle of Skye, Scotland; d. Parish of Portree, Isle of Skye, Scotland.
  - iii. ANN STEWART, b. Braes, Parish of Portree, Isle of Skye, Scotland.
4. iv. ISABELLA STEWART, b. Braes, Parish of Portree, Isle of Skye, Scotland; d. Isle of Skye, Scotland.
- 5/. v. PETER STEWART, b. Braes, Parish of Portree, Isle of Skye, Scotland.

Notes for PETER STEWART:

Peter Stewart emigrated to Prince Edward Island

### Generation No. 2

2. MARY3 STEWART (MALCOLM2, RONALD1) was born Abt. 1783 in Braes, Parish of Portree, Isle of Skye, Scotland, and died in Ontario, Canada. She married COLIN MURCHISON March 3, 1801. He was born Abt. 1780 in Snizort Parish, Isle of Skye, and died Bef. 1849 in Isle of Skye, buried in Gedintailor, Isle of Skye.

Notes for MARY STEWART:

Mary Stewart's husband Colin Murchison died and Mary and four grown children emigrated to Ontario in 1849

Child of MARY STEWART and COLIN MURCHISON is:

5. i. CATHERINE4 MURCHISON, b. 1813, Gedintailor, Parish of Portree, Isle of Skye, Scotland; d. February 16, 1883, PEI, buried in Little Sands Cemetary, PEI.

3. CATHERINE<sup>3</sup> STEWART (MALCOLM<sup>2</sup>, RONALD<sup>1</sup>) was born in Braes, Portree, Parish, Isle of Skye, Scotland, and died in Parish of Portree, Isle of Skye, Scotland. She married DONALD STEWART. He was born in Parish of Portree, Isle of Skye, Scotland.

Notes for DONALD STEWART:

It is believed that this family emigrated and settled on the Wood Islands Road, PEI  
Children of CATHERINE STEWART and DONALD STEWART are:

i. MALCOLM<sup>4</sup> STEWART, b. August 1, 1827.

ii. MARY STEWART, b. November 25, 1829.

iii. JOHN ALEXANDER STEWART, b. December 24, 1831; d. 1898.

4. ISABELLA<sup>3</sup> STEWART (MALCOLM<sup>2</sup>, RONALD<sup>1</sup>) was born in Braes, Parish of Portree, Isle of Skye, Scotland, and died in Isle of Skye, Scotland. She married JOHN STEWART. He was born Abt. 1808 in Portree Parish, Isle of Skye, Scotland, and died in Isle of Skye, Scotland.

Notes for JOHN STEWART:

John Stewart was a brother to Donald Stewart

Children of ISABELLA STEWART and JOHN STEWART are:

6. i. CATHERINE<sup>4</sup> STEWART, b. Abt. 1839, Peinchorran, Portree Parish, Isle of Skye, Scotland.

ii. DONALD STEWART, b. Abt. 1840, Peinchorran, Portree Parish, Isle of Skye, Scotland.

iii. JOHN STEWART, b. Abt. 1842, Peinchorran, Portree Parish, Isle of Skye, Scotland.

iv. FLORA STEWART, b. Abt. 1844, Peinchorran, Portree Parish, Isle of Skye, Scotland.

v. ANGUS STEWART, b. Abt. 1846, Peinchorran, Portree Parish, Isle of Skye, Scotland.

vi. RACHEL STEWART, b. Abt. 1848, Peinchorran, Portree Parish, Isle of Skye, Scotland.

Generation No. 3

5. CATHERINE<sup>4</sup> MURCHISON (MARY<sup>3</sup> STEWART, MALCOLM<sup>2</sup>, RONALD<sup>1</sup>) was born 1813 in Gedintailor, Parish of Portree, Isle of Skye, Scotland, and died February 16, 1883 in PEI, buried in Little Sands Cemetary, PEI. She married ALEXANDER STEWART, son of NORMAN STEWART and MARY FINLAYSON. He was born 1798 in Sconser, Portree Parish, Isle of Skye, Scotland, and died February 27, 1890 in PEI, buried in Little Sands Cemetary, PEI.

Notes for ALEXANDER STEWART:

Alexander Stewart and his wife Catherine Murchison and four young children emigrated to PEI in 1842, on the barque "John Kerr"

Children of CATHERINE MURCHISON and ALEXANDER STEWART are:

i. JOHN A<sup>5</sup> STEWART, b. March 16, 1831, Gedintailor, Parish of Portree, Isle of Skye, Scotland; d. PEI, buried in Little Sands Cemetary, PEI.

- ii. MALCOLM STEWART, b. June 16, 1835, Gedintailor, Parish of Portree, Isle of Skye, Scotland; d. PEI, buried in Little Sands Cemetary, PEI.
  - iii. FLORA STEWART, b. September 26, 1837, Gedintailor, Parish of Portree, Isle of Skye, Scotland; d. 1916, PEI, buried in Caledonia, PEI.
  - iv. SAMUEL STEWART, b. December 13, 1841, Gedintailor, Parish of Portree, Isle of Skye, Scotland; d. February 1, 1921, EI, buried in Little Sands Cemetary, PEI.
  - v. MARY STEWART, b. August 14, 1843, High Bank, PEI; d. PEI, Buried in Little Sands Cemetary, PEI.
  - vi. ANN STEWART, b. 1847, High Bank, PEI; d. PEI, buried in Little Sands Cemetary, PEI.
  - vii. MARY STEWART, b. 1849, High Bank, PEI; d. 1902, PEI, buried in Caledonia Cemetary, PEI.
  - viii. NORMAN STEWART, b. July 1852, High Bank, PEI; d. January 18, 1874, PEI, buried in Little Sands Cemetary, PEI.
6. CATHERINE<sup>4</sup> STEWART (ISABELLA<sup>3</sup>, MALCOLM<sup>2</sup>, RONALD<sup>1</sup>) was born Abt. 1839 in Peinchorran, Portree Parish, Isle of Skye, Scotland. She married DONALD MACLEOD. He was born in Balmeanach, Portree Parish, Isle of Skye, Scotland.

Children of CATHERINE STEWART and DONALD MACLEOD are:

- 7. i. ISABELLA<sup>5</sup> MACLEOD, b. January 27, 1859, Balmeanach, Isle of Skye, Scotland.
- 8. ii. ANN MACLEOD, b. April 19, 1860, Balmeanach, Isle of Skye.
- iii. DONALD MACLEOD, b. November 13, 1862, Balmeanach, Isle of Skye.
- iv. ALEXANDER MACLEOD, b. July 21, 1865, Balmeanach, Isle of Skye.
- v. JOHN MACLEOD, b. July 20, 1868, Balmeanach, Isle of Skye.
- vi. MARGARET MACLEOD, b. April 23, 1871, Balmeanach, Isle of Skye.
- vii. KATE MACLEOD, Balmeanach, Isle of Skye.

#### Generation No. 4

7. ISABELLA<sup>5</sup> MACLEOD (CATHERINE<sup>4</sup> STEWART, ISABELLA<sup>3</sup>, MALCOLM<sup>2</sup>, RONALD<sup>1</sup>) was born January 27, 1859 in Balmeanach, Portree Parish, Isle of Skye, Scotland. She married SAMUEL NICHOLSON. He was born in Portree Parish, Isle of Skye, Scotland.

Children of ISABELLA MACLEOD and SAMUEL NICHOLSON are:

- i. ALEXANDER<sup>6</sup> NICHOLSON.
- ii. JOHN NICHOLSON, b. Balmeanach, Portree Parish, Isle of Skye, Lived in Kintail, Isle of Skye, Scotland
- iii. ANGUS NICHOLSON,
- iv. DONALD NICHOLSON.
- v. MALCOLM NICHOLSON.
- vi. JAMES NICHOLSON.
- vii. CATHERINE NICHOLSON.

viii. CHRISTINA NICHOLSON, b. Balmeanach, Portree Parish, Isle of Skye, Scotland; m. MALCOLM MACLEAN; b. Island of Rassay, Scotland.

8. ANN5 MACLEOD (CATHERINE4 STEWART, ISABELLA3, MALCOLM2, RONALD1) was born April 19, 1860. She married JOHN NICHOLSON. He was born in Gedintailor, Parish of Portree, Isle of Skye, Scotland.

Children of ANN MACLEOD and JOHN NICHOLSON are:

- i. JOHN6 NICHOLSON, b. Gedintailor, Parish of Portree, Isle of Skye, Scotland; d. Parish of Portree, Isle of Skye, Scotland.
- ii. ALEXANDER NICHOLSON, b. Gedintailor, Parish of Portree, Isle of Skye, Scotland; d. Parish of Portree, Isle of Skye, Scotland; m. XXX UNKNOWN.
- iii. MARGARET NICHOLSON, b. Gedintailor, Parish of Portree, Isle of Skye, Scotland; d. Parish of Portree, Isle of Skye, Scotland.
- iv. WILLIAM NICHOLSON, b. Gedintailor, Parish of Portree, Isle of Skye, Scotland.
- v. DONALD NICHOLSON, b. Gedintailor, Parish of Portree, Isle of Skye, Scotland.
- vi. MALCOLM NICHOLSON, b. Gedintailor, Parish of Portree, Isle of Skye, Scotland.
- vii. ARCHIBALD NICHOLSON, b. Gedintailor, Parish of Portree, Isle of Skye, Scotland.
- viii. MARY NICHOLSON, b. Gedintailor, Parish of Portree, Isle of Skye, Scotland.

CHAPTER EIGHT

**5/. ANGUS (AONGHAS) STEWART (STIUBHAIRT) AND  
ANN (NANCY) MACMILLAN (NICMHAOLAIN)**

*Generation one: Peter and Christina. Generation two: Angus and Ann*

**ANGUS AND ANN LIVED AT LOT 8, WEST CAPE, PRINCE EDWARD ISLAND, CANADA**



**Lot 8**

Lot 8 is an allotment in Prince County, [Prince Edward Island, Canada](#). It is part of Halifax Parish. Lot 8 was awarded to Arnold Nisbett in the 1767 land lottery, passed to William Kilpatrick and Benjamin Todd in 1775, and to Todd's heirs in 1783. It is known for the West Point Lighthouse at Cedar Dunes Provincial Park in West Point.

188. **Aonghas (Angus) Stiubhairt (Stewart)**, son of [176. Pàdraig \(Patrick/Peter\) Stiubhairt](#) & [177. Cairistiona \(Christina\) NicMhaolain \(MacMillan\)](#). Born abt 1765 in Portree, Isle of Skye, Inverness-shire, Scotland. Aonghas (Angus) died in West Point, Lot 8, Prince Co., Prince Edward Island, bef Nov 1838; he was 73.

Angus Stewart, his wife Anna MacMillan, and their children emigrated to Prince Edward Island before 1794. The family initially settled on a 100-acre farm at Indian Point, Lot 18. They were Presbyterian. The second wife of Angus Stewart was a Roman Catholic woman with three children from her prior marriage. Angus Stewart remained Presbyterian, but the seven children from his second marriage were raised Roman Catholic.

Aonghas (Angus) married **Anna (Ann/Nancy) NicMhaolain (MacMillan)** in Portree, Isle of Skye, Inverness-shire, Scotland. 189. **Anna (Ann/Nancy) NicMhaolain (MacMillan)**. Born in Isle of Skye, Inverness-shire, Scotland. Anna (Ann/Nancy) died in Indian River, Lot 18, Prince Co., Prince Edward Island bef 1801. 190. **John MacPherson**. Born abt 1761 in Uig, Isle of Skye, Inverness-shire, Scotland. John died in Belle Creek, Lot 62, Queens Co., Prince Edward Island, on 30 Apr 1832; he was 71.

John married **Anne Matheson** . 191. **Anne Matheson**. Born abt 1759 in Uig, Isle of Skye, Inverness-shire, Scotland. Anne died in Belle Creek, Lot 62, Queens Co., Prince Edward Island, on 28 Oct 1849; she was 90.

**GENERATION TWO**

**Angus** was born about: 1765  
At: Mugeary, Isle of Skye, Scotland  
Died about: November 1838  
At: Lot 8, West Cape, Prince Edward Island, Canada  
Was buried in MacDonald Road, Pierre Jaques, Lot 8 Prince Edward Island  
Married about:  
At:  
To: **Ann (Nancy) MACMILLAN**  
She was born about: 1765  
At: Isle of Skye, Scotland  
Died about: 1801  
At: Indian River, Lot 18, Prince Edward Island, Canada

They had the following children generation three...

*Check all children*

**1/. Donald STEWART**  
**Born in Isle of Skye, Scotland**  
**Was born 1801 in West Point, Lot 8, Prince Edward Island, Canada**

**3/. Angus STEWART**  
**Angus married second Wife**  
**Angus also married**  
**(First wife) Mrs. MACEACHERN**

**4/. Alexander STEWART**  
**Was born about 1794 in Prince Edward Island, Canada**  
**Alexander married REBECCA (BETSY) MACPHERSON**

**5/. John STEWART**  
**Was born 1804 in West Point, Lot 8, Prince Edward Island, Canada**

**6/. Catherine STEWART**

**MARY ANN STEWART was born 1817**

**JAMES STEWART was born 1809**

**Margaret Ann STEWART**

**PATRICK STEWART**  
**Died in Cape Wolf Lot 7 Prince Edward Island, Canada**

## CHILDREN OF ANGUS ANN (NANCY) MACMILLAN

### 4/. ALEXANDER STEWART (1794 - 1873)

#### Alexander "Big" Stewart

Born **1794** in **Belle Creek, Prince Edward Island** ♀

Son of [father unknown] and [mother unknown]

[sibling(s) unknown]

Husband of **Rebecca (Mcperson) Stewart** — married [date unknown] [location unknown]

Husband of **Christina Ann (Mcperson) Stewart** — married [date unknown] [location unknown]

Father of Mary Ann Stewart, John Stewart, Alexander Stewart, Catherine Stewart and Angus Stewart

Died **13 Jul 1873** in **Prince Edward Island, Canada** ♀

Profile manager: Karen Linneberg ✉ [send private message]

Profile last modified 30 Oct 2019 | Created 7 Jun 2016

This page has been accessed 216 times.

#### Biography

Alexander was born in 1794. He passed away in 1873. He married Rebecca Betsy Mcpherson as his first wife. She died young and he married her sister Ann Christina as his 2nd wife. Alexander was the son of Aonghas (Angus) Stiubhairt (Stewart) 1765–1838 Birth 1765 • Portree, Isle of Skye, Inverness-shire, Scotland Death 11/1838 • Prince Edward Island, Canada and his wife (Ann/Nancy) NicMhaolain (MacMillan) –1801 Birth Born in Isle of Skye, Inverness-shire, Scotland Death 1801 • Prince Edward Island, Canada

#### Sources

"Prince Edward Island Baptism Card Index, 1721-1885," database with images, FamilySearch (<https://familysearch.org/ark:/61903/1:1:KCXV-LD5> : 11 March 2018), John Stewart, 06 Jan 1825; citing p. 6, volume 2, Belfast , Prince Edward Island, Public Archives, Charlottetown; FHL microfilm 1,487,767.

"Prince Edward Island Baptism Card Index, 1721-1885," database with images, FamilySearch (<https://familysearch.org/ark:/61903/1:1:KCXV-22C> : 11 March 2018), Cathe Stewart, 20 Sep 1828; citing p. 35, volume 2, Belfast , Prince Edward Island, Public Archives, Charlottetown; FHL microfilm 1,487,767.

"Prince Edward Island Baptism Card Index, 1721-1885," database with images, FamilySearch (<https://familysearch.org/ark:/61903/1:1:KCXV-5FC> : 11 March 2018), Angus Stewart, 15 May 1830; citing p. 44, volume 2, Belfast , Prince Edward Island, Public Archives, Charlottetown; FHL microfilm 1,487,767.

"Prince Edward Island Baptism Card Index, 1721-1885," database with images, FamilySearch (<https://familysearch.org/ark:/61903/1:1:KCXV-24P> : 11 March 2018), Alex Stewart, 05 Dec 1826; citing p. 16, volume 3, Charlottetown , Prince Edward Island, Public Archives, Charlottetown; FHL microfilm 1,487,767.

CHAPTER NINE

**6/. PETER STUART/STEWART AND CHRISTINA (CHRISTY)  
MACMILLAN THEN MARGARET MACKENZIE**

*Generation one: Peter and Christina. Generation two: Peter and Christina then Margaret??*

**GENERATION TWO**

*Note: There is not a lot known about Peter Stewart. Only a few official records found. But a lot of hearsay knowledge has been firing around the internet for some time now... the reader can decide for themselves with more research...treat all as conjecture...*

**OFFICIAL RECORDS FIRST**

**Peter** had the following children...

**Charles Stewart**

Principal  
Canada, Prince Edward Island Baptism Card Index,  
1721-1885

**Baptism** 8 July 1808

Charlottetown, Queens, Prince Edward Island,

Canada

**Parents** Peter Stewart, Christiana Stewart

**1/. MARGERY**

**Peter Stewart**

Father  
Canada, Prince Edward Island Baptism Card Index, 1721-1885

**Spouses** Christina

**Children** Margery  
Stewart

Name **Margery Stewart**

Baptism Date **22 May 1816**

Baptism Place **Ch'Town , Prince Edward  
Island**

Father's Name **Peter Stewart**

Mother's Name **Christina**

Entry Number 3

SURNAME		CHRISTIAN NAMES	
STEWART		MARGERY	
DATE OF BIRTH		PLACE OF BIRTH	
12 Apr. 1815		Lot 34	
BAPTISMAL DATE		CLERGY OFFICIATING	
22 May 1816		T. Desbrisay	
FATHER'S NAME		MOTHER'S NAME	
Peter Stewart		Christina	
LOCATION OF RECORD		RECORD BOOK No.	PAGE
St. Paul's Church, Ch'town		3	160
DEPT. OF HEALTH DIVISION OF VITAL STATISTICS CHARLOTTETOWN - P.E. ISLAND			

**2/ MARGARET**

**Peter Stewart**

Father

Canada, Prince Edward Island Baptism Card Index, 1721-1885

**Spouses** Christina

**Children** Margaret  
Stewart

Name **Margaret Stewart**

Baptism Date **24 Jul 1817**

Baptism Place **Ch'Town , Prince Edward Island**

Father's Name **Peter Stewart**

Mother's Name **Christina**

Entry Number 3

SURNAME		CHRISTIAN NAMES	
STEWART		MARGARET	
DATE OF BIRTH		PLACE OF BIRTH	
12 May 1817		Lot 34	
BAPTISMAL DATE		CLERGY OFFICIATING	
24 July 1817		T. Desbrisay	
FATHER'S NAME		MOTHER'S NAME	
Peter Stewart		Christina	
LOCATION OF RECORD		RECORD BOOK NO.	PAGE
St. Paul's Church, Ch'town		5	165
DEPT. OF HEALTH DIVISION OF VITAL STATISTICS CHARLOTTETOWN, P.E. ISLAND			

### 3/. PETER STEWART

#### Margaret Mckenzie

Mother

Canada, Prince Edward Island Baptism Card Index, 1721-1885

Spouses Peter Stewart

Children Peter Stewart

#### MARGARET MCKENZIE'S SPOUSES AND CHILDREN

OPEN ALL

#### Peter Stewart

Child

Name **Peter Stewart**

Baptism Date **06 Dec 1858**

Baptism Place **Prince Edward Island**

Father's Name **Peter Stewart**

Mother's Name **Margaret Mckenzie**

Entry Number 1

Peter Stewart

Husband

M

SURNAME		CHRISTIAN NAMES	
Stewart		Peter	
DATE OF BIRTH	PLACE OF BIRTH		
spring 1841	Anderson Road		
BAPTISMAL DATE	CLERGY OFFICIATING		
6 Dec. 1858	Rev. Donald McDonald		
FATHER'S NAME		MOTHER'S NAME	
Peter Stewart		Margaret McKenzie	
LOCATION OF RECORD		RECORD BOOK No.	PAGE
Free Church of Scotland		1	20
DEPT. OF HEALTH & STATISTICS DIVISION OF VITAL STATISTICS CHARLOTTETOWN, P.E.I.			

### UNOFFICIAL RECORDS NEXT

**Peter** was born about: 1770

At: Mugeary, Isle of Skye, Scotland

Died about: 1841

At: Anderson's Road, (Now Springton) Lot 67, Prince Edward Island, Canada

Married about:

At: Isle of Skye, Scotland

To: **Christina (Christy) Macmillan**

She was born about:

At: Parish of Portree, Isle of Skye, Scotland.

Died about:

At: Belle Creek, Lot 62, Prince Edward Island, Canada

They had the following children...

1/.Iain (John) STEWART

Was born about 1799

2/. Anna STEWART

Was born about 1803 in Gortnacraig, Parish of Portree, Isle of Skye and  
was christened 8 Jan 1904 in Gortnacraig, Parish of Portree, Isle of Skye

**3/. Mor (Sarah; Sally) STEWART**

Was born about 1809 in Parish of Portree, Isle Of Skye, Scotland  
Mor married **ALLAN STEWART**

**4/. Mary STEWART**

Was born about 1816 in Belle Creek, Lot 62, Prince Edward Island, Canada

**5/. Alexander STEWART**

Was born in Belle Creek, Lot 62, Prince Edward Island, Canada  
He died about 1847/1848

**PETER also married (2) MARGARET MACKENZIE**

On 1828 in Bell Creek, PEI, Canada. Margaret died 11 Jul 1850

They had the following children...

**1/. Allan STEWART**

Was born about 1829/1830

**2/. Alexander STEWART**

Was born about 1832

**3/. Catherine STEWART**

Was born about 1834 and died 14 Oct 1914

**4/. Christina STEWART**

Was born about 1839 in Springton, Lot 67 Prince Edward Island

CHAPTER TEN

**2/. CHARLES STUART-STEWART AND MARY MCMILLAN**

*Generation one: Patrick and Christina. Generation two: Charles and Mary*

**DIRECT GREAT X GRANDPARENTS FOR JOHANNA THOMAS-MAUDE**

*Charles and his wife Mary (and children) were early Selkirk settlers who landed at Belfast Cove, Prince Edward Island, Canada in 1803 from the Isle of Skye, Scotland.*

*They settled on Lot 62, Belle River.*

**NOTES**

88. **Teàrlach (Charles) Stiubhairt (Stewart)**, son of **176. Pàdraig (Patrick/Peter) Stiubhairt & 177. Cairistiona (Christina) NicMhaolain (MacMillan)**. Born abt 1760 in Portree, Isle of Skye, Inverness-shire, Scotland. Teàrlach (Charles) died in Belfast, Lot 58, Queens Co., Prince Edward Island, on 27 Sep 1850; he was 97.

Charles Stewart was a farmer at Lot 62 according to the 1841 Prince Edward Island census. He headed a household that consisted of two males under age 16, two males aged 16-45, one male over 60, three females under age 16, and three females aged 16-45. The family were all members of the Church of Scotland. Three were natives of Scotland while eight were born at Prince Edward Island. Charles Stewart held 187 acres of land fee simple, of which 50 acres were arable. In 1840 he produced 40 bushels of wheat, ten bushels of barley, 200 bushels of oats, and 700 bushels of potatoes. He owned three horses, 18 neat cattle. 30 sheep and seven hogs.

Bef 1800 Teàrlach (Charles) married **Mairi (Mary) NicMhaolain (MacMillan)** in Portree, Isle of Skye, Inverness-shire, Scotland.

89. **Mairi (Mary) NicMhaolain (MacMillan)**. Born abt 1770 in Isle of Skye, Inverness-shire, Scotland. Mairi (Mary) died in Prince Edward Island.

**GENERATION TWO**

**Charles** was born about: 1760

At: Portree, Isle of Skye, Scotland

Died about: 27 September 1850

At: Belfast, Prince Edward Island, Canada

Married about: 1790

At: Parish of Portree, Isle of Skye, Scotland.

To: **Mary McMillan**

She was born about: 1770

At: Portree, Isle of Skye, Scotland

Died about:

At: Belfast, Prince Edward Island, Canada

Buried in: St. Johns Pres. Cemetery Belfast, Prince Edward Island

**Charles and Mary** had the following known children...

**1/. Ronald STEWART Ronald (Ragnall) Stewart/ Stuart Ronald Stewart**

**2/. Alexander STUART Alexander Stuart**

**3/. Malcolm Alexander/Angus Malcolm Angus Stuart**

**4/. Christina STEWART**

**5/. Mary STEWART. Mary Stewart**

**6/. Angus STEWART Angus Stewart Stuart**

**7/. Catherine STEWART**

## MEMORIALS FOR CHARLES AND MARY

### CHARLES STEWART

<b>BIRTH</b>	1760 Isle of Skye, Highland, Scotland
<b>DEATH</b>	27 Sep 1850 (aged 89–90) Belfast, Queens County, Prince Edward Island, Canada
<b>BURIAL</b>	<u>Saint John's Presbyterian Cemetery</u> Belfast, Queens County, Prince Edward Island, Canada
<b>PLOT</b>	LOT 58
<b>MEMORIAL ID</b>	147868095 · <a href="#">View Source</a>

### MAIRI 'MARY' NICMHAOLAIN 'MACMILLAN'

<b>BIRTH</b>	1770 Isle of Skye, Highland, Scotland
<b>DEATH</b>	unknown Belfast, Queens County, Prince Edward Island, Canada
<b>BURIAL</b>	<u>Belle River Pioneer Scotland Cemetery</u> Belle River, Queens County, Prince Edward Island, Canada
<b>MEMORIAL ID</b>	148457469 · <a href="#">View Source</a>

Gravesite Details...

Whatever marker was there is long gone.

Flowers



Rest in peace dear 3rd great grandmother  
Left by [Judy](#) on 5 Oct 2015



Flowers • 3



Left by [Annie](#) on 10 Jul 2016



From another grgrgr granddaughter, With much respect,

Left by [Annie](#) on 8 Jan 2016



**Spelling on headstone STUART but early records spell STEWART**

**NOTES ONLY...**

**TEARLACH STIUBHAIRT**

Male, b. circa 1760, d. 27 September 1850

Father*	Padraig <b>Stiubhairt</b>
Mother*	Cairistiona <b>NicMhaolain</b>

Tearlach **Stiubhairt** was also known as Charles Stewart

He was born circa 1760 at Portree, Isle of Skye, Invernessshire, Scotland

He married Mairi **NicMhaolain** before 1800 at Portree, Isle of Skye, Invernessshire, Scotland

Tearlach Stiubhairt died on 27 September 1850 at Lot 58, Belfast, PE

**FAMILY: MAIRI NICMHAOLAIN**

Malcolm Alexander **Stewart** b. c 1808, d. 10 May 1901

Angus **Stewart** b. c 1815, d. 7 Jun 1878

**CITATIONS**

1. [S1079] Paulsen Ahnentafel, online [http://genealogy-paulsen.com/Paulsen\\_Ahnentafel/AT\\_TOC.HTM](http://genealogy-paulsen.com/Paulsen_Ahnentafel/AT_TOC.HTM)

**MAIRI NICMHAOLAIN**

Female

Mairi **NicMhaolain** was born at Scotland

She died at PE

Mairi NicMhaolain was also known as Mary MacMillan

Her married name was Stewart. As of before 1800, her married name was Stiubhairt.

She married Tearlach **Stiubhairt**, son of Pdraig **Stiubhairt** and Cairistiona **NicMhaolain**, before 1800 at Portree, Isle of Skye, Invernessshire, Scotland

**FAMILY: TEARLACH STIUBHAIRT B. C 1760, D. 27 SEP 1850**

Malcolm Alexander **Stewart** b. c 1808, d. 10 May 1901

Angus **Stewart** b. c 1815, d. 7 Jun 1878

**CITATIONS**

1. [S1079] Paulsen Ahnentafel, online [http://genealogy-paulsen.com/Paulsen\\_Ahnentafel/AT\\_TOC.HTM](http://genealogy-paulsen.com/Paulsen_Ahnentafel/AT_TOC.HTM)

CHAPTER ELEVEN

**CHILDREN OF CHARLES STEWART/STUART  
AND MARY MCMILLAN**

**1/. RONALD (RAGHNALL) NEIL STEWART AND CATHERINE MACKAY**

*Generation one: Patrick and Christina. Generation two: Charles and Mary.*

*Generation three: Ronald and Catherine*

**GENERATION THREE**

**Ronald** was born about: 1800

At: Mugeary, Isle of Skye, Scotland

Died about: 8 Jan 1877

At: Prince Edward Island, Canada

Married about: 1830

At:

To: **Catherine MACKAY**

She was born about: 1815

At: Prince Edward Island, Canada

Died about:

At:

They had the following children...

**1/. Charles STUART**

Was born 25 Dec 1835 in Three Rivers Prince Edward Island, Canada

Baptism Date: 26 Sep 1836

**2/. Hector STUART**

Was born 4 Nov 1837 in Anderson's Road, Prince Edward Island, Canada

He died 1915 in Prince Edward Island, Canada

Baptism Date: 29 Nov 1840

**3/. Neil STUART**

Was born 2 Jun 1840 in Anderson's Road Prince Edward Island, Canada

He died Jan 1898 in Prince Edward Island, Canada. Neil married Mary HARRISON-BANK in 1840? In Anderson's Road, Prince Edward Island, Canada

Baptism Date: 29 Nov 1840

~ 91 ~

**4/. Mary STUART**

Was born about 1847

**5/. Margaret STUART**

Was born about 1851-1853

**6/. Catherine STUART**

Was born 15 Apr 1856

BaptismDate:16 Nov 1859

**7/. John STUART**

Was born 20 Nov 1859

In Anderson's Road, Prince Edward Island Canada

**8/. Donald Stuart**

Baptism Date: 20 Nov 1859

Following records from [https: www.familysearch.org/](https://www.familysearch.org/)

**BIRTHS OF CHILDREN**

**Ronald Stuart**

Father

Canada, Prince Edward Island Baptism Card Index, 1721-1885

**Spouses** Catharine

Mackay

**Children** Cathrine Stuart

**Ronald Stuart**

Father

Canada, Prince Edward Island Baptism Card Index, 1721-1885

**Spouses** Cathrine Mackay

**Children** Donald Stuart

**Ronald Stewart**

Father

Canada, Prince Edward Island Baptism Card Index, 1721-1885

**Spouses** Catharine Mckay

**Children** Neil Stewart

**Ronald Stewart**

Father

Canada, Prince Edward Island Baptism Card Index, 1721-1885

**Spouses** Catharine Mckay

**Children** Charles Stewart

**Ronald Stewart**

Father

Canada, Prince Edward Island Baptism Card Index, 1721-1885

**Spouses** Catharine Mckay

**Children** Hector Stewart

**Ronald Stuart**

Father

Canada, British Columbia Death Registrations, 1872-1986;  
1992-1993

**Spouses** Catherine Mckay

**Children** Margaret  
Courtney

## MEMORIALS FOR RONALD AND CATHERINE



<b>BIRTH</b>	1802 Isle of Skye, Highland, Scotland
<b>DEATH</b>	8 Jan 1877 (aged 74–75) Prince Edward Island, Canada
<b>BURIAL</b>	<u>Saint John's Presbyterian Cemetery</u> Belfast, Queens County, Prince Edward Island, Canada
<b>MEMORIAL ID</b>	148484102 · <a href="#">View Source</a>

<b>BIRTH</b>	1815 Scotland
<b>DEATH</b>	unknown Belfast, Queens County, Prince Edward Island, Canada
<b>BURIAL</b>	<u>Saint John's Presbyterian Cemetery</u> Belfast, Queens County, Prince Edward Island, Canada
<b>MEMORIAL ID</b>	153003701 · <a href="#">View Source</a>

Children: Charles, Hector, Neil Ronald, Mary, Margaret, Donald, Malcolm, John, Catherine



**Hector Stuart**  
1837–1915

~ 94 ~

Neil Ronald Stuart  
1840–1898  
Catherine *Stuart* Buchanan  
1856–1913  
Flowers

Plant Memorial Trees



Rest in peace Catherine  
Left by [Judy](#) on 29 Sep 2015  
[Leave a Flower](#)

**CHILDREN OF RONALD AND CATHERINE**

*Generation one: Patrick and Christina. Generation two: Charles and Mary.  
Generation three: Ronald and Catherine: Generation four: Children of Ronald and Catherine.*

**GENERATION FOUR**

**1/. CHARLES STUART**

Was born 25 Dec 1835 in Three Rivers Prince Edward Island, Canada

Name	<b>Charles Stewart</b>
Baptism Date	<b>26 Sep 1836</b>
Baptism Place	<b>Belfast, Prince Edward Island</b>
Father's Name	<b>Ronald Stewart</b>
Mother's Name	<b>Catharine Mckay</b>

**2/. HECTOR STUART**

Was born 4 Nov 1837 in Anderson's Road, Prince Edward Island, Canada  
He died 1915 in Prince Edward Island, Canada

Name	<b>Hector Stewart</b>
Baptism Date	<b>29 Nov 1840</b>
Baptism Place	<b>Belfast, Prince Edward Island</b>
Father's Name	<b>Ronald Stewart</b>
Mother's Name	<b>Catharine Mckay</b>

**3/. NEIL STUART**

Was born 2 Jun 1840 in Anderson's Road Prince Edward Island, Canada  
He died Jan 1898 in Prince Edward Island, Canada. Neil married Mary HARRISON-BANK in Anderson's Road, Prince Edward Island, Canada

Name	<b>Neil Stewart</b>
Baptism Date	<b>29 Nov 1840</b>
Baptism Place	<b>Belfast, Prince Edward Island</b>
Father's Name	<b>Ronald Stewart</b>
Mother's Name	<b>Catharine Mckay</b>

Neil Ronald Stuart

1840–1898

**4/. MARY STUART**

No records

**5/. MARGARET COURTNEY NEE STUART**

**CENSUS**

Margaret Courtney

F

68

, Prince Edward Island

Name	<b>Margaret Courtney</b>
Sex	<b>Female</b>
Age	<b>68</b>
Death Date	<b>06 Nov 1919</b>
Death Place	<b>New Westminster, British Columbia, Canada</b>
Birth Date	<b>1852</b>
Birth Year (Estimated)	<b>1851</b>
Birthplace	<b>, Prince Edward Island</b>
Marital Status	<b>Married</b>
Father's Name	<b>Ronald Stuart</b>
Mother's Name	<b>Catherine Mckay</b>
Spouse's Name	<b>Jos Courtney</b>

**6/. CATHERINE BUCHANAN NEE STUART/STEWART**

Born in **Breadalbane, Queens County, Prince Edward Island, Canada** on **15 April 1856** to Ronald (Raghnall) Stewart/ Stuart and Catherine MacKay. Catherine Stewart married Samuel Buchanan and had 5 children. She passed away on **7 June 1913** in **Charlottetown, Queens County, Prince Edward Island, Canada**.

***Catherine Stuart Buchanan***

1856–1913

Name **Cathrine Stuart**

Baptism Date **16 Nov 1859**

Baptism Place **Prince Edward Island**

Father's Name **Ronald Stuart**

Mother's Name **Catharine Mackay**

Name **Donald Stuart**

Baptism Date **20 Nov 1859**

Baptism Place **, Prince Edward Island**

Father's Name **Ronald Stuart**

Mother's Name **Cathrine Mackay**

**6/. Catherine STUART** Was born 15 Apr 1856 g/.

in the [Canada, Find a Grave Index, 1600s-Current](#)

Detail Source

Name:	Catherine Buchanan
Gender:	Female
Birth Date:	15 Apr 1856
Birth Place:	Breadalbane, Queens County, Prince Edward Island, Canada
Death Date:	7 Jun 1913
Death Place:	Charlottetown, Queens County, Prince Edward Island, Canada
Cemetery:	Springton Cemetery
Burial or Cremation Place:	Springton, Queens County, Prince Edward Island, Canada
Has Bio?:	Y
Father:	<a href="#">Ronald Neil Stewart</a>
Mother:	<a href="#">Catherine Stuart</a>
Spouse:	<a href="#">Samuel Buchanan</a>
Children:	<a href="#">Mary Ethel Hockin</a> , <a href="#">Roland Buchanan</a> , <a href="#">Sarah Ann Buchanan</a>
URL:	<a href="https://www.findagrave.com/memorial/181707539/catherine-buchanan">https://www.findagrave.com/memorial/181707539/catherine-buchanan</a>

**7/. JOHN STUART.**

Was born 20 Nov 1859 in Anderson's Road, Prince Edward Island Canada

**8/. DONALD STUART**

Baptism Date: 20 Nov 1859

Name Donald Stuart

Name Donald Stuart

Baptism Date 20 Nov 1859

Baptism Place , Prince Edward Island

Father's Name Ronald Stuart

Mother's Name Cathrine Mackay

SURNAME		CHRISTIAN NAMES	
Stuart		Donald	
DATE OF BIRTH	PLACE OF BIRTH		
20 Oct. 1854			
BAPTISMAL DATE	CLERGY OFFICIATING		
20 Nov. 1859	Rev. S. Sutherland		
FATHER'S NAME		MOTHER'S NAME	
Ronald Stuart		Cathrine MacKay	
LOCATION OF RECORD		RECORD BOOK No.	PAGE
Bradalbane United Church			4
DEPT. OF HEALTH & STATISTICS DIVISION OF VITAL STATISTICS CHARLOTTETOWN, P.E. ISLAND			

## **2/. ALEXANDER STUART AND CATHERINE MARTIN**

*Generation one: Patrick and Christina. Generation two: Charles and Mary.*

*Generation three: Alexander and Catherine*

### **GENERATION THREE**

**Alexander** was born about: 16 August 1802

At: Mugeary, Isle of Skye, Scotland

Died about: 10 Apr 1841

At: Prince Edward Island, Canada. (Drowned At Sea)

Buried at: St John's Church, Belfast Prince Edward Island

Married about: 1832

At: Orwell Bay, Prince Edward Island Canada.

To: **Catherine MARTIN**

She was born about: 1807

At: Orwell Bay, Prince Edward Island, Canada

Died about: 8 Apr 1861

At: Prince Edward Island, Canada

They had the following children...

#### **1/. Catherine STEWART**

Was born 10 Feb 1833 in Pinette, PEI, Canada

#### **2/. Margaret STEWART**

Was born 18 Sep 1835 and died 11 Jan 1925

**Married Angus Malcolm Stewart**

#### **3/. Flora (1) STEWART**

Was born 8 Mar 1838 in Pinette, PEI, Canada

#### **4/. Christine STEWART**

Was born 20 May 1840 in Pinette, Prince Edward Island, Canada

**Alexander Stewart drowned, and Catherine Martin married 2nd Charles MacWilliams**

**Children by second Husband for Catherine Martin... Dan Mac Williams**

#### **1/. Janet MAC WILLIAMS**

Was born 16 Jun 1845 in Pinette, Prince Edward Island, Canada

#### **2/. Mary MAC WILLIAMS**

Was born 17 May 1847 in Pinette, Prince Edward Island, Canada

#### **3/. Hugh MAC WILLIAMS**

Was born 6 May 1849 in Pinette, Prince Edward Island, Canada.

**4/. Samuel MAC WILLIAMS**

Was born 25 Nov 1850 in Belfast, PEI, Canada

**NOTES ONLY...**

**ALEXANDER STEWART**

Male, b. circa 1794, d. 13 July 1873

Father*	Aonghas <b>Stiubhairt</b> b. c 1765, d. b Nov 1838
Mother*	Anna <b>NicMhaolain</b> d. b 1801

Alexander **Stewart** also went by the name of Alexander Stewart

He was born circa 1794 at PE

He married Rebecca **MacPherson**, daughter of John **MacPherson** and Anne **Matheson**, circa 1817

Alexander Stewart was buried in July 1873 at Lot 58, Belfast, PE

He died on 13 July 1873 at Lot 58, North Pinette, PE

**FAMILY: REBECCA MACPHERSON D. 15 MAY 1830**

Mary Ann **Stewart** b. c 1818, d. 17 Jul 1860

**CITATIONS**

1. [S1079] Paulsen Ahnentafel, online [http://genealogy-paulsen.com/Paulsen\\_Ahnentafel/AT\\_TOC.HTM](http://genealogy-paulsen.com/Paulsen_Ahnentafel/AT_TOC.HTM)

**REBECCA MACPHERSON**

F, d. 15 May 1830

Father*	John <b>MacPherson</b>
Mother*	Anne <b>Matheson</b>

Rebecca **MacPherson** was born at PE

Rebecca MacPherson also went by the name of Betsey MacPherson

She married Alexander **Stewart**, son of Aonghas **Stiubhairt** and Anna **NicMhaolain**, circa 1817

As of circa 1817, her married name was Stewart

Rebecca MacPherson died on 15 May 1830 at Lot 62, Belle Creek, PE

**FAMILY: ALEXANDER STEWART B. C 1794, D. 13 JUL 1873**

Mary Ann **Stewart** b. c 1818, d. 17 Jul 1860

**CITATIONS**

1. [S1079] Paulsen Ahnentafel, online [http://genealogy-paulsen.com/Paulsen\\_Ahnentafel/AT\\_TOC.HTM](http://genealogy-paulsen.com/Paulsen_Ahnentafel/AT_TOC.HTM)

### **3/. MALCOLM ANGUS STUART/STEWART**

*Generation one: Patrick and Christina. Generation two: Charles and Mary.*

*Generation three: Malcolm and*

#### **GENERATION THREE**

**SEE PAGE FOR 119: GENEALOGY OF MALCOLM ANGUS STEWART**

#### **DIRECT ANCESTOR FOR JOHANNA THOMAS-MAUDE**

See more [Stewart](#) memorials in:  
[Saint John's Presbyterian Cemetery](#)  
[Belfast](#)  
[Queens County](#)  
[Prince Edward Island](#)  
[Canada](#)  
[Find a Grave](#)

#### 4/. CHRISTINA STEWART AND NEIL MACEACHERN

*Generation one: Patrick and Christina. Generation two: Charles and Mary.*

*Generation three: Christina and Neil*

#### GENERATION THREE

**Christina** was born about:

At:

Died about:

At:

Married about:

At:

To: **Neil MACEACHERN.**

He was born about: 11 Dec 1821

At:

Died about:

At:

They had the following children...

#### 1/. HUGH MACEACHERN

SURNAME		CHRISTIAN NAMES	
MACEACHARN		HUGH	
DATE OF BIRTH		PLACE OF BIRTH	
11 Dec. 1821			
BAPTISMAL DATE		CLERGY OFFICIATING	
23 July 1822		T. Desbrisay	
FATHER'S NAME		MOTHER'S NAME	
Niel MacEacharn		Christina Stewart	
LOCATION OF RECORD		RECORD BOOK No.	PAGE
St. Paul's Church, Charlottetown		5	205
DEPT. OF HEALTH DIVISION OF VITAL STATISTICS CHARLOTTETOWN P.E.-ISLAND			

**2/. CATHERINE MACEACHERN**

was born 24 Apr 1823

SURNAME		CHRISTIAN NAMES	
McEachern		<del>NIEL</del> Catherine	
DATE OF BIRTH	PLACE OF BIRTH		
24 Apr. 1823	Wood Island Road		
BAPTISMAL DATE	CLERGY OFFICIATING		
18 Oct. 1823	Rev. John McLennan		
FATHER'S NAME		MOTHER'S NAME	
Niel McEachern		Christina Stewart	
LOCATION OF RECORD		RECORD BOOK No.	PAGE
St. John's Pres. Church, Belfast		2	1
DEPT. OF HEALTH DIVISION OF VITAL STATISTICS CHARLOTTETOWN, P.E. ISLAND			

**3/. CHARLES MACEACHERN**

was born 2 Mar 1825

SURNAME		CHRISTIAN NAMES	
McEachern		Char.	
DATE OF BIRTH	PLACE OF BIRTH		
2 Mar. 1825	Wood Island Road		
BAPTISMAL DATE	CLERGY OFFICIATING		
24 Mar. 1825	Rev. John McLennan		
FATHER'S NAME		MOTHER'S NAME	
Niel McEachern		Christy Stewart	
LOCATION OF RECORD		RECORD BOOK No.	PAGE
St. John's Pres. Ch., Belfast		2	6
DEPT. OF HEALTH DIVISION OF VITAL STATISTICS CHARLOTTETOWN, P.E. ISLAND			

**4/. MARY MACEACHERN**

was born 15 Apr 1827

SURNAME		CHRISTIAN NAMES	
McEachern		Mary	
DATE OF BIRTH		PLACE OF BIRTH	
15 Apr. 1827		Big Wood	
BAPTISMAL DATE		CLERGY OFFICIATING	
29 Apr. 1827		Rev. John McLennan	
FATHER'S NAME		MOTHER'S NAME	
Neil McEachern		Christian Stewart (widow)	
LOCATION OF RECORD		RECORD BOOK No	PAGE
St. John's Pres. Ch., Belfast		2	21
DEPT. OF HEALTH DIVISION OF VITAL STATISTICS CHARLOTTETOWN - P.E. ISLAND		SERIES SYSTEMS 9002	

## 5/. MARY STEWART

*Generation one: Patrick and Christina. Generation two: Charles and Mary.*

*Generation three: Mary and Alexander*

### GENERATION THREE

**Mary** was born about: 1800

At: Isle of Skye Highland Scotland

Died about: 1898

At: Belfast Prince Edward Island, Canada

Married about:

At:

To: **Alexander Nicholson**

He was born about: 1798

At: Prince Edward Island, Canada

Died about: 1847

At: Belfast, PEI, Canada

Buried: In St John's Pres Cemetery, Belfast, PEI, Canada

They had the following children...

**1/. Catherine NICHOLSON** was born 20 Aug 1827

**2/. John NICHOLSON** was born 29 Aug 1828

**3/. Ann NICHOLSON** was born 13 Apr 1830

**4/. Donald NICHOLSON** was born 12 Jul 1831

**5/. Peter NICHOLSON** was born 10 Aug 1833

**6/. Charles NICHOLSON** was born 1 Feb 1835

**7/. Angus NICHOLSON** was born 1837

**8/. Alexander NICHOLSON** was born 7 Apr 1842



### ANGUS NICHOLSON

<b>BIRTH</b>	26 Jun 1837 Flat River, Queens County, Prince Edward Island, Canada
<b>DEATH</b>	unknown Belfast, Queens County, Prince Edward Island, Canada
<b>BURIAL</b>	<u>Saint John's Presbyterian Cemetery</u> Belfast, Queens County, Prince Edward Island, Canada
<b>MEMORIAL ID</b>	153002728 · <a href="#">View Source</a>

Angus **NICHOLSON** married **MARGARET MACDONALD**  
Margaret was born 1846. She died 1939

MARY NICHOLSON NEE STEWARD



## Mary Stewart Nicholson

Birth: 1800  
Isle of Skye  
Highland, Scotland  
Death: 1898  
Belfast  
Prince Edward Island,  
Canada

### Family links:

#### Parents:

Charles Stuart Stewart (1760 - 1850)

Mary MacMillan Stewart (1770 - \_\_\_\_\_)

#### Spouse:

Alexander Nicholson (1798 - 1847)\*

#### Children:

Mary Nicholson (1826 - 1904)\*

Angus Nicholson (1837 - \_\_\_\_\_)\*

#### Siblings:

Ronald Neil Stewart (1799 - 1877)\*

Mary Stewart Nicholson (1800 - 1898)

Malcolm Angus Stewart-Stuart (1808 - 1901)\*

Angus Stewart Stuart (1815 - 1878)\*

\*Calculated relationship

#### Burial:

Saint John's Presbyterian  
Cemetery



Added by: Lynn Ellis



Cemetery Photo

Added by: Karen Dicks Miller

Add a photo  
for this person 

Request  
A Photo 

Photos may be scaled.

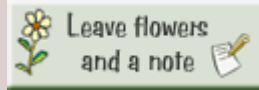
Belfast  
Queens County  
Prince Edward Island, Canada

Created by: [jabs](#)  
Record added: Jun 29, 2015  
Find A Grave Memorial#  
148458234

Click on image for full size.



Rest in peace 3rd great  
Aunt Mary  
- [Judy](#)  
Added: Sep. 28, 2015



## 6/. ANGUS STEWART

*Generation one: Patrick and Christina. Generation two: Charles and Mary.*

*Generation three: Angus and Mary Ann then Isabella*

### GENERATION THREE

was born about:

At:

Died about:

At:

Married about:

At:

To:

She was born about:

At:

Died about:

At:

They had the following children...

**See following information for all above...**



BIRTH	1815 Belle River, Queens County, Prince Edward Island, Canada
DEATH	7 Jun 1878 (aged 62–63) Prince Edward Island, Canada
BURIAL	<u>Springton Cemetery</u> Springton, Queens County, Prince Edward Island, Canada
MEMORIAL ID	147334628 · <a href="#">View Source</a>

CEMETERY TRANSCRIPT 67-5, PEIGS PUBLICATION

Age 63

Angus was the youngest child of six children born to Charles and Mairi (MacMillan) Stuart originally spelled Stewart.

He married Mary Stewart in 1838, Prince Edward Island, Canada and they had ten children.

He married Isabella MacKinnon 31 January 1861, Prince Edward Island, Canada and they had eight children.

Father of Christina Stuart 1852-1884

Mary Ann STUART 1848–

Alexander Archibald Stuart 1854–1923

Angus Stuart 1858–1871

Brother of Catherine Stewart 1802–1877

Christina Stewart 1804–

The last name has been spelled both Stuart and Stewart.

Spouses



*Mary Ann Stewart Stuart*

1818–1860 (m. 1838)



*Isabella MacKinnon Stuart*

1838–1897 (m. 1861)

Siblings



*Mary Stewart Nicholson*

~ 114 ~

1800–1898



Ronald Neil Stewart

1802–1877



Malcolm Angus Stuart

1809–1901

Children



Rebecca *Stuart* McRae

1838–1914



Mary *Stewart* Stuart

1840–1918

Catherine Stuart

1841–1869



Ann Stewart

1846–1850



Charles Stewart

~ 115 ~

1848–1897

Christina *Stewart* Stewart

1852–1884



Alexander Archibald Stuart

1854–1923



Euphemia P *Stuart* Hurd

1856–1928

Flora B Stuart

1863–1892



Malcolm Stuart

1864–1957



Neil Stuart

1866–1963



Margaret Jane *Stewart* MacDonald

1867–1929



~ 116 ~

Daniel Angus Stewart

1870–1967



Effie Jane *Stewart* Watson

1873–1962



John Angus Stuart

1876–1966



Elizabeth *Stuart* Livingstone

1878–1974

Flowers



Rest in peace dear 2nd great grandfather  
Left by [Judy](#) on 5 Oct 2015

## Angus Stewart Stuart

Birth: 1815  
Belle River  
Prince Edward Island,  
Canada  
Death: Jun. 7, 1878  
Prince Edward Island,  
Canada

Father of Donald (1871-)

### Family links:

#### Parents:

Charles Stuart Stewart (1760 -  
1850)  
Mary *MacMillan* Stewart (1770  
- \_\_\_\_)

#### Spouses:

Mary Ann *Stewart* Stuart (1818  
- 1860)\*  
Isabella  
McDonald *MacKinnon* Stewart  
(Stuart) (1838 - 1897)\*

#### Children:

Ann Stewart-Stuart (1846 -  
1850)\*  
Effie *Stuart* Hurd (1856 -  
1928)\*  
John Angus Stewart (1862 -  
1966)\*  
Flora B Stewart (Stuart) (1863 -  
1892)\*  
Malcolm Stewart (1864 -  
1957)\*  
Neil Stewart (1866 - 1963)\*  
Margaret  
Jane *Stewart* MacDonald (1867 -



Added by: Lynn Ellis



Cemetery Photo

Added by: Karen Dicks Miller



Photos may be scaled.  
Click on image for full size.



Rest in peace dear 2nd  
great grandfather  
- Judy

Added: Oct. 4, 2015

1929)\*

Daniel A Stewart (1869 -  
1967)\*

Effie Jane *Stewart* Watson  
(1873 - 1963)\*

Elizabeth *Stewart* Livingston  
(1878 - 1974)\*

Siblings:

Ronald Neil Stewart (1799 -  
1877)\*

Mary *Stewart* Nicholson (1800  
- 1898)\*

Malcolm Angus Stewart-Stuart  
(1808 - 1901)\*

Angus Stewart Stuart (1815 -  
1878)

\*Calculated relationship

Burial:

Springton Cemetery

Springton

Queens County

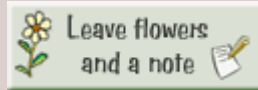
Prince Edward Island, Canada

Created by: jabs

Record added: Jun 02, 2015

Find A Grave Memorial#

147334628



CHAPTER TWELVE

**3/. MALCOLM STEWART-STEWART**  
**(BORN: BELLE CREEK, PRINCE EDWARD ISLAND. LOT 62)**  
**AND MARY MCPHERSON**  
**(BORN: ORWELL BAY, PRINCE EDWARD ISLAND. LOT 57)**

*Generation one: Patrick and Christina. Generation two: Charles and Mary.*  
*Generation three: Malcolm and Mary*

**GENERATION THREE**

**DIRECT STEWART ANCESTOR FOR JOHANNA THOMAS-MAUDE**

**ABOVE: MALCOLM STEWART. BUT WHICH MALCOLM???**

**Our Malcolm Stewart** was born about: 1809  
At: Belle Creek, Prince Edward Island Canada.  
Died about: 10 May 1901  
At: Belle Creek, Prince Edward Island Canada  
Was buried in St. Johns Pres. Church Cemetery  
Married about: 1830  
At: Prince Edward Island. Canada.  
To: **Mary MCPHERSON**  
She was born about: Mar 1809  
At: In Orwell Bay, Prince Edward Island Canada  
Died about: 2 Jan 1889  
At: Belle Creek, Prince Edward Island Canada

They had the following children...

- 1/. Mary STEWART
- 2/.Angus Malcolm STEWART (NZ)
- 3/.Ann STEWART
- 4/.John STEWART
- 5/.Christy STEWART
- 6/. Charles STEWART
- 7/. Donald Malcolm STEWART
- 8/.Alexander (Sandy) Malcolm STEWART

following records from familysearch.com

**Malcom Stewart**

Father

**Spouses** Mary Mcpherson

**Children** Angus Stewart

Canada, Prince Edward Island Baptism Card Index, 1721-1885

**Malcom Stewart**

Father

Canada, Prince Edward Island Baptism Card Index, 1721-1885

**Spouses** Mary Mcpherson

**Children** Donald Stewart

**Malcom Stewart**

Father

Canada, Prince Edward Island Baptism Card Index, 1721-1885

**Spouses** Mary Mcpherson

**Children** Ann Stewart

**Malcom Stewart**

Father

Canada, Prince Edward Island Baptism Card Index, 1721-1885

**Spouses** Mary Mcpherson

**Children** Charles Stewart

**Malcom Stewart**

Father

Canada, Prince Edward Island Baptism Card Index, 1721-1885

**Spouses** Mary Mcpherson

**Children** John Stewart

Census

Name **Malcolm Stewart**

Sex **Male**

Age **72**

Event Date **1881**

Event Place **Lot 62, Queens, Prince Edward Island, Canada**

Sub-District **Lot 62**

Sub-District Number **V**

District Number **2**

Birth Date **1809**

Birthplace **Prince Edward Island**

Marital Status **Married**

Occupation **Farmer**

Race **Scottish**

Nationality **Scotch**

Religion **C. Presbyterian**

Head of Household Name **Malcolm Stewart**

Event Type **Census**

Family Number **4**

Page **1**

Volume **6**

*OTHER PEOPLE ON THIS RECORD*

OPEN ALL

[Mary Stewart](#)

F

72

Prince Edward Island

[Alexander Stewart](#)

M

29

Prince Edward Island

[Mary Stewart](#)

F

27

Prince Edward Island

[Sarah Mceachem](#)

F

59

Prince Edward Island

## MEMORIALS

WHERE WILL THE MIGHTY MILLIONS BE A HUNDRED YEARS TO COME...



Added by Amber Smith: <https://www.findagrave.com>



**MALCOLM ANGUS STUART/STEWART**



**Inscription**  
**IN MEMORY OF**  
**MALCOLM STUART**  
**WHO DIED**  
**MAY 10. 1901**

<b>BIRTH</b>	15 Dec 1809 Belle River, Queens County, Prince Edward Island, Canada
<b>DEATH</b>	10 May 1901 (aged 91) Belle River, Queens County, Prince Edward Island, Canada
<b>BURIAL</b>	<u>Saint John's Presbyterian Cemetery</u> Belfast, Queens County, Prince Edward Island, Canada
<b>MEMORIAL ID</b>	148483813 · <a href="#">View Source</a>

<https://www.findagrave.com/memorial/148483813/malcolm-angus-stuart>

**According to the Stewart family bible Malcolm was born and died in Belle Creek,  
Prince Edward Island, Canada.**

**The headstone spelling is STUART but the family Bible spelling is STEWART.**

**Belle Creek and Belle River used to be separate communities, then they amalgamate in  
1966 and became Belle River.**

**Age 93 years**

**1901 Census of Canada lists birth as 15 December 1809 which would make Malcolm 91  
years, 4 months, 25 days at time of his death.**

**Married Mary McPherson around 1830 in Canada.**

**Also father of  
John Stewart**

**Name: John Malcolm Stuart**

**Record Type: Owner**

**Residence Place: Belle Creek, Queens, Prince Edward Island , Canada**

**Occupation: Tradesman - non marine**

**Vessel Name: Ann Westaway**

**Vessel Type: Schooner**

**Vessel Registration Number: I866113**

**Vessel Registration Place: Prince Edward Island (all ports)**

**Year Vessel Constructed: 1866**

**Crew Number: 1**

**Charles Malcolm Stewart Captain 9 Mar 1843–**

**Name Charles Stuart**

**Record Type Owner**

**Residence Place Belle Creek, Queens, Prince Edward Island, Canada**

**Occupation Mariner**

**Vessel Name Ann Westaway**

**Vessel Type Schooner**

**Vessel Registration Number I866113**

**Vessel Registration Place Prince Edward Island (all ports)**

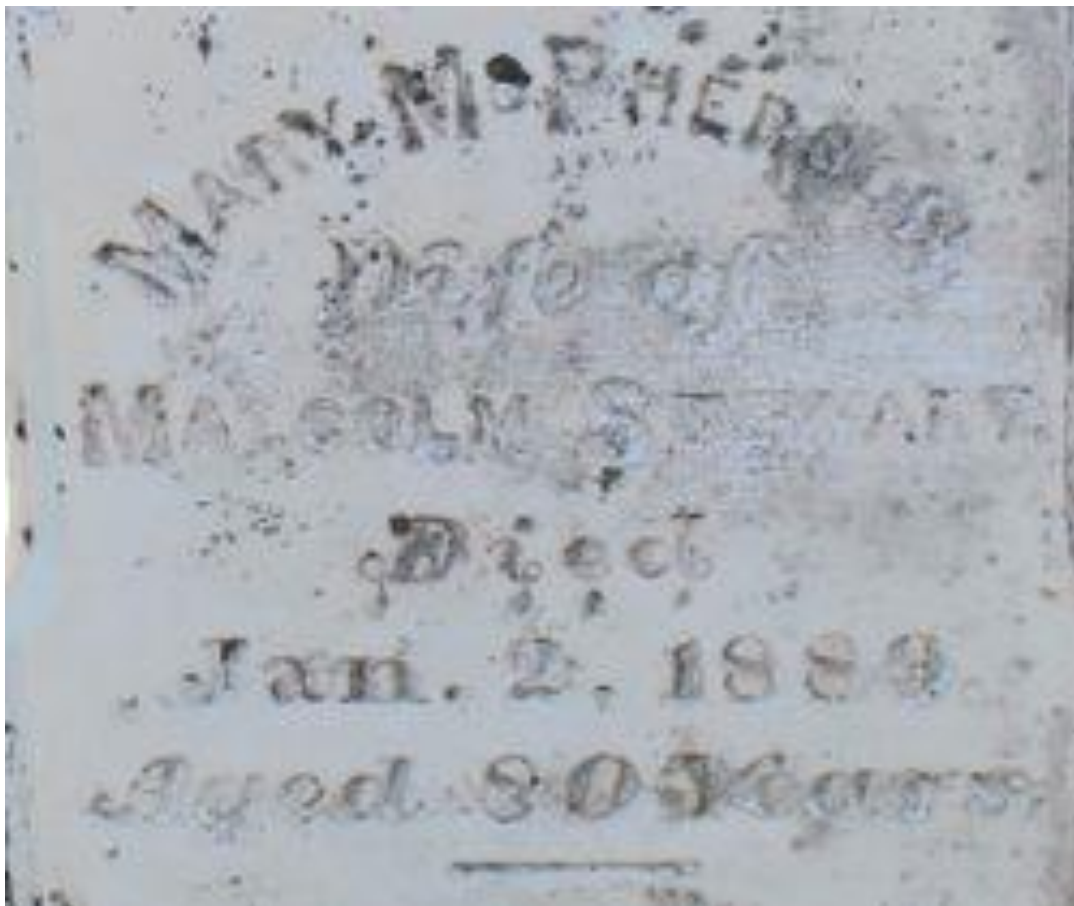
**Year Vessel Constructed 1866**

**Crew Number 2**

CHAPTER THIRTEEN

**MARY MCPHERSON AND HER FAMILY**  
**MARY MARRIED MALCOLM STEWART**





BIRTH	17 Mar 1809 Orwell Cove, Queens County, Prince Edward Island, Canada
DEATH	2 Jan 1889 (aged 79) Belle River, Queens County, Prince Edward Island, Canada
BURIAL	<u>Saint John's Presbyterian Cemetery</u> Belfast, Queens County, Prince Edward Island, Canada
MEMORIAL ID	153003477 · <a href="#">View Source</a>

<https://www.findagrave.com/memorial/153003477/mary-stewart>

**Inscription  
IN MEMORY OF  
MARY MCPHERSON  
WIFE OF  
MALCOLM STEWART  
DIED  
JAN. 2, 1889,  
AGED 80 YEARS.**

**According to the Stewart family bible Mary McPherson was born March 1809, Orwell Bay, PEI. Died Belle Creek, PEI 2 Jan 1889.**

**Headstone shows died 2 Jan 1889 age 80 Years.**

**Orwell Bay is actually the bay and Orwell Cove is the community. The Scottish settlers' ships anchored in the Bay.**

**Belle Creek and Belle River used to be separate communities, then they amalgamate in 1966 and became Belle River.**

**Mother of Charles Malcolm Stuart 9 March 1843–**

**Charles married [Emmeline Zwicker](#). 28 Jun 1877 • Kings, Prince Edward Island, Canada**

**Witnesses Samuel B Adkin and Roger Buchanan. Together they had two daughters Mary Agnes and Anne Florence.**

**COULD THE FOLLOWING BE MARY MACPHERSONS FAMILY?**

Note: There has been no official record found of Marys parents, but we do know she was possibly born at Orwell Cove, Prince Edward Island...could the following McPherson family living at Belfast be her people. Some married into the Stewart family who were living in that area??? It makes sense that this is our McPhersons as they practically lived next door to our Stewarts???

John M. McKenzie	120 1/2	John. McKenzie 50	Wilfred LaVoie	Dr. Dewar
	Kerr. Matheson. 50	Pat. Dougherty 50		
	Mrs. M. Worth. 50	Alex. S. McLeod		
	John. M. McKenzie 100			
	A. M. Beaton. 75	175		
	Patrick. O'Connell. 100	John. Stewart 50		
	R. McRae. 50	Mrs. J. Stewart 50		
	John. McLean 50	Murdock. Gillis 125		
	John. Jenkins 125	Wallace. Singleton 50		
	Ang. A. McLean. 37 1/2	John. Stewart 50		
Malcolm McLean 87 1/2	John. McLean 37 1/2	Thos. McPherson 75	Alex. Matheson 75	Levi. Morrow. 56
	Alex. T. McLeod. 100	Rodk. McPherson. 100.		
	John. Stewart 50	Mrs. J. Stewart. 50		
	Thos. McPherson 50	Mrs Wm. Ross. 50		
	Ang. A. McLean. 50	Edw. Purchase. 75		
	A Stewart 50	John & Jas. Gillis 25		

<https://www.davidrumsey.com/luna/servlet/detail/RUMSEY~8~1~259129~5522349:Lot s-60-and-62,-Queens-County,-Prin>

**JOHN MCPHERSON (1758 - 1832)**

was born about:

At:

Died about:

At:

Married about:

At:

To:

She was born about:

At:

Died about:

At:

They had the following children...

- 1/.
- 2/.
- 3/.
- 4/.
- 5/.

**Births of parents of these children...**

**Marriage...**

**Births of children...**

**Deaths...**

**John Mcpherson**

Born **1758** in **Kingussie and Inch, Inverness, Scotland** 🇬🇧

Son of [father unknown] and [mother unknown]

[sibling(s) unknown]

Husband of **Annie Matheson** — married May 1780 in Kingussie and Inch, Inverness-shire, Scotland 🇬🇧

**DESCENDANTS** 📖

Father of **Flora Matheson (Mcpherson) Docherty**, **Donald McPherson**, **Rebecca (Mcpherson) Stewart**, **Christina Ann (Mcpherson) Stewart**, **Euphemia (Mcpherson) Mcdougall** and **John Mcpherson**

Died **30 Apr 1832** in **Belle Creek, Prince Edward Island, Canada** 🇬🇧

Profile manager: **Tracy Huggan** ✉ [\[send private message\]](#)

Profile last modified 29 Apr 2021 | Created 6 Jun 2016

This page has been accessed 656 times.

## BIOGRAPHY

John was born in 1758. John Mcpherson ... He passed away in 1832.

## SOURCES

1. Scotland, Select Marriages, 1561-1910 View Record Name John Macpherson Gender Male Marriage Date May 1780 Marriage Place Kingussie and Inch, Inverness, Scotland FHL

Film Number 990710, 990711 Household Members Name Age John Macpherson Anne Macpherson

2. U.S. and Canada, Passenger and Immigration Lists Index, 1500s-1900s View Record Name John McPherson Arrival Year 1787-1830 Arrival Place Prince Edward Island Source Publication Code 9758.1 Primary Immigrant McPherson, John Annotation Date and port of arrival. Name of ship, place of origin, place of destination, date of birth and death, parentage, occupation, and other historical and family data may also be provided. Source Bibliography WHYTE, DONALD. A Dictionary of Scottish Emigrants to Canada before Confederation. Toronto: Ontario Genealogical Society. Volume 2, 1995. 435p. Page 266

3. Canadian Immigrant Records, Part Two View Record Name John MacPherson Year of Record 1803 Comments Selkirk settler onboard one of the vessels Polly, Dyks of Oughten which sailed from Mull, etc., Hebrides, etc., Skye, etc. to Belfast. No passenger lists exist; name taken from a letter of 1811. Reference Transcribed from documents held in the collection of the National Archives of Canada [Ottawa]: MG 24, vol. I 10 to I 13, file Prince Edward Island Immigration. Source/Event Early Immigration (from United Kingdom) to Prince Edward Island (1769-1878) compiled by Mary Brehaut at Charlottetown in 1960. Only those portions which refer to specific passengers aboard specific vessels are transcribed.

#### 4. gillis family records

Canada, Find A Grave Index, 1600s-Current View Record Name John McPherson Cemetery Belle River Pioneer Scotland Cemetery Burial or Cremation Place Belle River, Queens County, Prince Edward Island, Canada Has Bio? N URL <http://www.findagrave.com/cgi-bin/fg.cgi?page=gr&GRid=131582848&ref=acom>

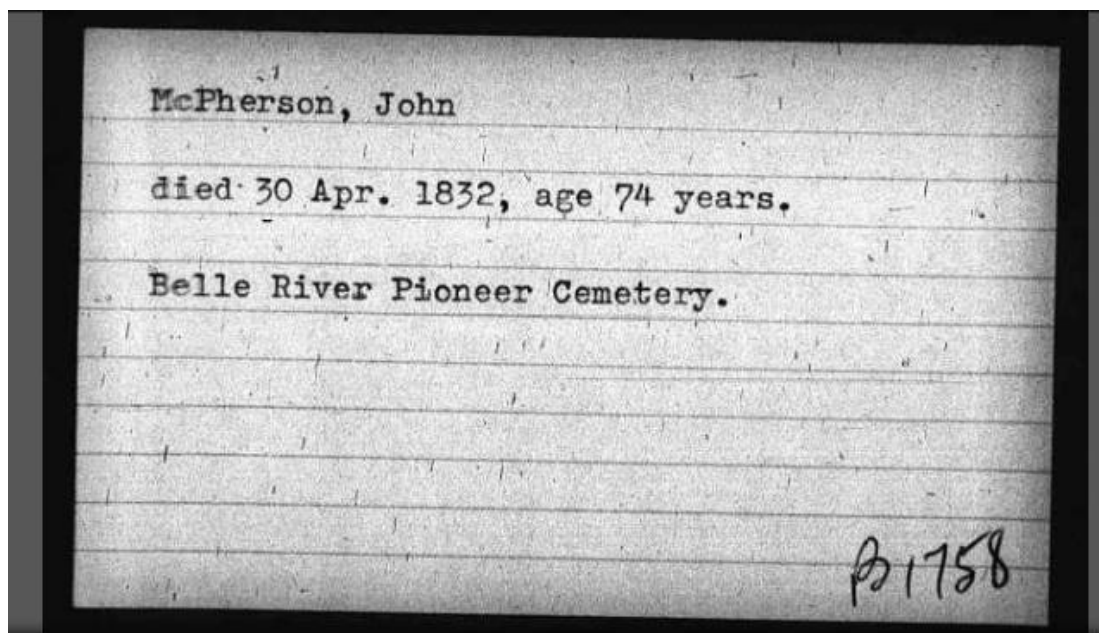
Name **John McPherson**

Age **74**

Death Date **30 Apr 1832**

Death Place **Belle River Pioneer Cemetery, Prince Edward  
Island, Canada**

Birth Year (Estimated) **1758**



Name **Annie Matheson McPherson**

Death or Burial Place **Lot 62, Queens, Prince Edward Island, Canada**

Death or Burial Longitude **-62.836122**

Death or Burial Latitude **45.982031**

Cemetery

**Belle River Pioneer Cemetery**

Death Date

**28 Oct 1849**



Photo added by [Karen Dicks Miller](#)

## **FAMILY MEMBERS**

### **Spouse**

•



[John McPherson](#)

1761–1832

## FLOWERS

### Plant Memorial Trees



Left by [jabs](#) on 30 Aug 2019

## CHILDREN OF JOHN AND ANNIE MCPHERSON

### FLORA MATHESON (MCPHERSON) DOCHERTY (ABT. 1790 - AFT. 1868)

Flora Matheson Docherty formerly Mcperson

Born **about 1790** in **Skye, Inverness-shire, Scotland** ♀

Daughter of John Mcpherson and Annie Matheson

Sister of Rebecca (Mcperson) Stewart, Donald McPherson [half], Christina Ann (Mcperson) Stewart, Euphemia (Mcperson) Mcdougall and John Mcpherson

Wife of Malcolm Docherty — married [date unknown] [location unknown]  
[children unknown]

Died **after 5 Nov 1868** in **North East Lake Ainslie, Inverness Co., Nova Scotia, Canada** ♀

Profile manager: [Tracy Huggan](#) ✉ [\[send private message\]](#)

Profile last modified 29 Apr 2021 | Created 7 Jun 2016

### REBECCA (MCPHERSON) STEWART (ABT. 1794 - 1830)

Rebecca "betsy" Stewart formerly Mcperson

Born **about 1794** [location unknown]

Daughter of John Mcpherson and Annie Matheson

Sister of Flora Matheson (Mcperson) Docherty, Donald McPherson [half], Christina Ann (Mcperson) Stewart, Euphemia (Mcperson) Mcdougall and John Mcpherson

Wife of Alexander Stewart — married [date unknown] [location unknown]

Mother of Mary Ann Stewart, John Stewart, Alexander Stewart, Catherine Stewart and Angus Stewart

Died **15 May 1830** in **Prince Edward Island, Canada** ♀

Profile manager: [Tracy Huggan](#) ✉ [\[send private message\]](#)

Profile last modified 29 Apr 2021 | Created 7 Jun 2016

This page has been accessed 198 times.

## BIOGRAPHY

She passed away in 1830. Rebecca MacPherson married, as his first wife, Big Alexander Stewart of Belle Creek PEI. He was s/o Angus Stewart and Anne Nancy Macmillan emigrants from Portree Skye. They had 8 children. Rebecca died young and Her sister Christina MacPherson married as his 2nd wife Big Alexander Stewart of Belle Creek PEI. They had 14 children

## SOURCES



**DONALD MCPHERSON (ABT. 1794)**

**Donald McPherson** aka **MacPherson**

Born **about 1794** in **Scotland** 🇬🇧

Son of John Mcpherson and [mother unknown]

Brother of Flora Matheson (Mcpherson) Docherty [half], Rebecca (Mcpherson) Stewart [half], Christina Ann (Mcpherson) Stewart [half], Euphemia (Mcpherson) Mcdougall [half] and John Mcpherson [half]

Husband of **Margaret (McMillan) McPherson** — married before 1824 in Flat River, Queens, Prince Edward Island, Canada 🇬🇧

### DESCENDANTS

Father of Micheal McPherson

Died [date unknown] in **Prince Edward Island, Canada** 🇬🇧

**CHRISTINA ANN (MCPHERSON) STEWART (ABT. 1800)**

**Christina Ann (Christy) Stewart** formerly **Mcpherson**

Born **about 1800** in **Skye, Inverness-shire, Scotland** 🇬🇧

Daughter of John Mcpherson and Annie Matheson

Sister of Flora Matheson (Mcpherson) Docherty, Rebecca (Mcpherson) Stewart, Donald McPherson [half], Euphemia (Mcpherson) Mcdougall and John Mcpherson

Wife of **Alexander Stewart** — married [date unknown] [location unknown] [children unknown]

Died [date unknown] in **Lot 62, Belle River, Prince Edward Island, Canada** 🇬🇧

Profile manager: Tracy Huggan ✉ [send private message]

Profile last modified 29 Apr 2021 | Created 7 Jun 2016

This page has been accessed 163 times.

## BIOGRAPHY

Ann was born about 1800. Ann is the child of John Mcpherson and Ann Matheson. she was big alexander stewarts 2nd wife, her sister rebecca betsy was his first wife.

## SOURCES

- Prince Edward Island Baptism Card Index, 1721-1885," database with images, FamilySearch (<https://familysearch.org/ark:/61903/1:1:KCXK-9FM> : 8 March 2021), Christian Mcpherson in entry for Rebecca Stewart, 29 Jan 1836; citing p. 91, volume 2, Belfast , Prince Edward Island, Public Archives, Charlottetown; FHL microfilm 1,487,767 \*



## EUPHEMIA (MCPHERSON) MCDOUGALL (1801)

Euphemia Mcdougall formerly Mcpherson

Born **1801** in **Isle of Skye** ♀

Daughter of John Mcpherson and Annie Matheson

Sister of Flora Matheson (Mcpherson) Docherty, Rebecca (Mcpherson) Stewart, Donald McPherson [half], Christina Ann (Mcpherson) Stewart and John Mcpherson

Wife of **Donald Mcdougall** — married about 1825 in Prince Edward Island, Canada ♀

## DESCENDANTS

Mother of Alexander Mcdougall

Died [date unknown] in **Belle River, Prince Edward Island, Canada** ♀

## JOHN MCPHERSON (1803 - 1863)

John Mcpherson

Born **1803** in **Belle Creek, Prince Edward Island** ♀

Son of John Mcpherson and Annie Matheson

Brother of Flora Matheson (Mcpherson) Docherty, Rebecca (Mcpherson) Stewart, Donald McPherson [half], Christina Ann (Mcpherson) Stewart and Euphemia (Mcpherson) Mcdougall

Husband of **Mary Currie** — married 1822 in Prince Edward Island ♀

## DESCENDANTS

Father of Ann (Mcpherson) Jenkins, Sarah (Mcpherson) Lamont, Margaret (Mcpherson) McLeod, Catherine (McPherson) McDonald, John Alexander Mcpherson, Donald Mcpherson, Mary MacPherson and Alexander Mcpherson

## LOT 57 ORWELL COVE

**It is also very possible that descendants of Mary's Clan the McPherson's  
lived at lot 57 Orwell Cove**

**Before that this family lived at Murray Harbour Road, Queens, Prince Edward Island**

**Were her parents Christina and Malcolm McPherson/MacPherson  
or was Malcolm her brother.**

## THE MACPHERSON HOUSE

**Historic site in today's world...**

*This site is named after the MacPherson family who lived here between 1877 and 1886. Christina and Malcolm MacPherson were originally from Scotland, settling on Prince Edward Island's Murray Harbour Road in 1829 where they raised eleven children. Upon the loss of her husband, Christina and her youngest son Alexander moved to this two-storied, six-roomed house from their home on Murray Harbour Road (an approximately ten-kilometre trip). Alexander was about twenty years old when they arrived and ran a cabinet-making business here in Orwell with Charles MacGregor Jenkins. Christina and Alexander shared their new home with James McPherson, a relative a few years younger than Alexander, a carriage-maker named James Smith, a young painter named Alex Smith and Catherine McPhee, a clerk. The MacPhersons sold the property to Captain Alexander McLeod Sr. in 1886. By 1891 Alexander had moved away and Christina was living in Valley-eld with her widowed eldest daughter, Flora. The MacPhersons were neither the first nor the last to own this property, however. Its proprietors have been identified from circa 1803 to the 1930s:*

# PUBLIC ARCHAEOLOGY AT ORWELL CORNER

### PUBLIC ARCHAEOLOGY

The Aboriginal Affairs Secretariat of Prince Edward Island held its first Orwell Public Archaeology program in 2012. Public archaeology offers visitors of all ages the opportunity to uncover the past while working alongside professional archaeologists. Our objective is to increase public awareness of archaeology and local history while promoting Island tourism. Visitors and volunteers will learn firsthand about how archaeologists excavate and record sites, archaeological features, and artifacts.



### THE MACPHERSON HOUSE

Excavations at this site, which we call the "MacPherson House", provide us with a special glimpse into rural life in Prince Edward Island during the 19<sup>th</sup> and early 20<sup>th</sup> centuries.

### TO THE ARCHIVES!

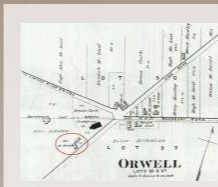
Historical documentation such as that which can be found at local archives has provided us with the names of people who owned and inhabited the property, as well as many of their occupations.

This site is named after the MacPherson family who lived here between 1877 and 1886. Christina and Malcolm MacPherson were originally from Scotland, settling on Prince Edward Island's Murray Harbour Road in 1829 where they raised eleven children. Upon the loss of her husband, Christina and her youngest son Alexander moved to this two-storied, six-roomed house from their home on Murray Harbour Road (an approximately ten-kilometre trip). Alexander was about twenty years old when they arrived and ran a cabinet-making business here in Orwell with Charles MacGregor Jenkins.

Christina and Alexander shared their new home with James McPherson, a relative a few years younger than Alexander, a carriage-maker named James Smith, a young painter named Alex Smith and Catherine McPhee, a clerk.

The MacPhersons sold the property to Captain Alexander McLeod Sr. in 1886. By 1891 Alexander had moved away and Christina was living in Valleyfield with her widowed eldest daughter, Flora.

The MacPhersons were neither the first nor the last to own this property, however. Its proprietors have been identified from circa 1803 to the 1930s:



### MEACHAM'S ATLAS

Meacham's Atlas, published in 1880, provides maps of each of Prince Edward Island's lots. This detail shows the MacPherson property as it was situated in Orwell.

### TO THE TRENCHES!

Based on archaeological investigations, the stone foundation supporting this house's wooden frame measured approximately 36 by 21 feet and was equipped with a cellar. There is no evidence that the house was burned down; all evidence suggests that the building was abandoned to collapse over time.

Artifacts recovered from the site such as ceramic vessels, smoking pipes, buttons and jewelry provide us with information about the day-to-day lives of the house's occupants.

### DR. PIERCE'S GOLDEN MEDICAL DISCOVERY!



Bottles containing pharmaceuticals such as Dr. Pierce's Golden Medical Discovery were uncovered here. This concoction,

imported from Buffalo New York, was an alleged cure-all capable of treating malnutrition, blemishes, digestive issues, weakness, sore throats, liver ailments and more, and could be purchased in the late 19<sup>th</sup> to early 20<sup>th</sup> centuries for \$1.35.



### HAT PIN ORNAMENT

This ornament was worn on the end of a hat-pin.

### TIMELINE

## THE MACPHERSON HOUSE

Excavations at this site, which we call the "MacPherson House", provide us with a special glimpse into rural life in Prince Edward Island during the 19<sup>th</sup> and early 20<sup>th</sup> centuries. Archaeological evidence from the house shows that the floorboards eventually gave way, causing the contents of the house to slide into the cellar where they were found by archaeologists. In addition to the identification of period artifacts, this evidence tells us that the house had been left to collapse by the early 1930s, leaving thousands of artifacts inside.

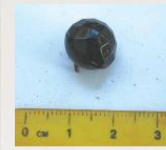
The property was used by individuals of remarkably diverse occupations including a teacher, a painter, a cook, a cabinet-maker and a master mariner.



The MacPhersons were neither the first nor the last to own this property, however. Its proprietors have been identified from circa 1803 to the 1930s:

### TIMELINE

- c. 1803** — **John Nicholson** owned but did not inhabit the land.
- c. 1870** — **Peter Nicholson**, grandson of John Nicholson, owned but did not inhabit the property.
- unknown date** — **Captain Alexander McLeod Sr.**, a master mariner, likely built the house on this property.
- 1877** — **Christina MacPherson** bought and moved into the house with her son Alexander.
- 1886** — **Captain Alexander McLeod Sr.** purchased the land back from the MacPhersons.
- 1890** — **Bella Ross**, her sister and widowed mother moved into the house. Bella was employed as a cook and her sister, Katie, as a teacher. Bella's literacy allowed her to conduct the property purchase although she was only 16 years old at the time.
- c. 1913 - 1923** — **Charles Dougald MacDonald**, his wife Mary and their children moved into the homestead.
- c. 1930** — **Andrew MacPhail** bought the property but did not live on it. You can learn more about him as you explore Orwell Corner Historic Village.
- 1970s** — Orwell Corner was recognized by the PEI Museum and Heritage Foundation as an historic site.



#### HAT PIN ORNAMENT

This ornament was worn on the end of a hat-pin. Hat-pins were common accessories in the 19<sup>th</sup> century, becoming less common in the early 20<sup>th</sup> century.

#### ARTIFICIAL TOOTH

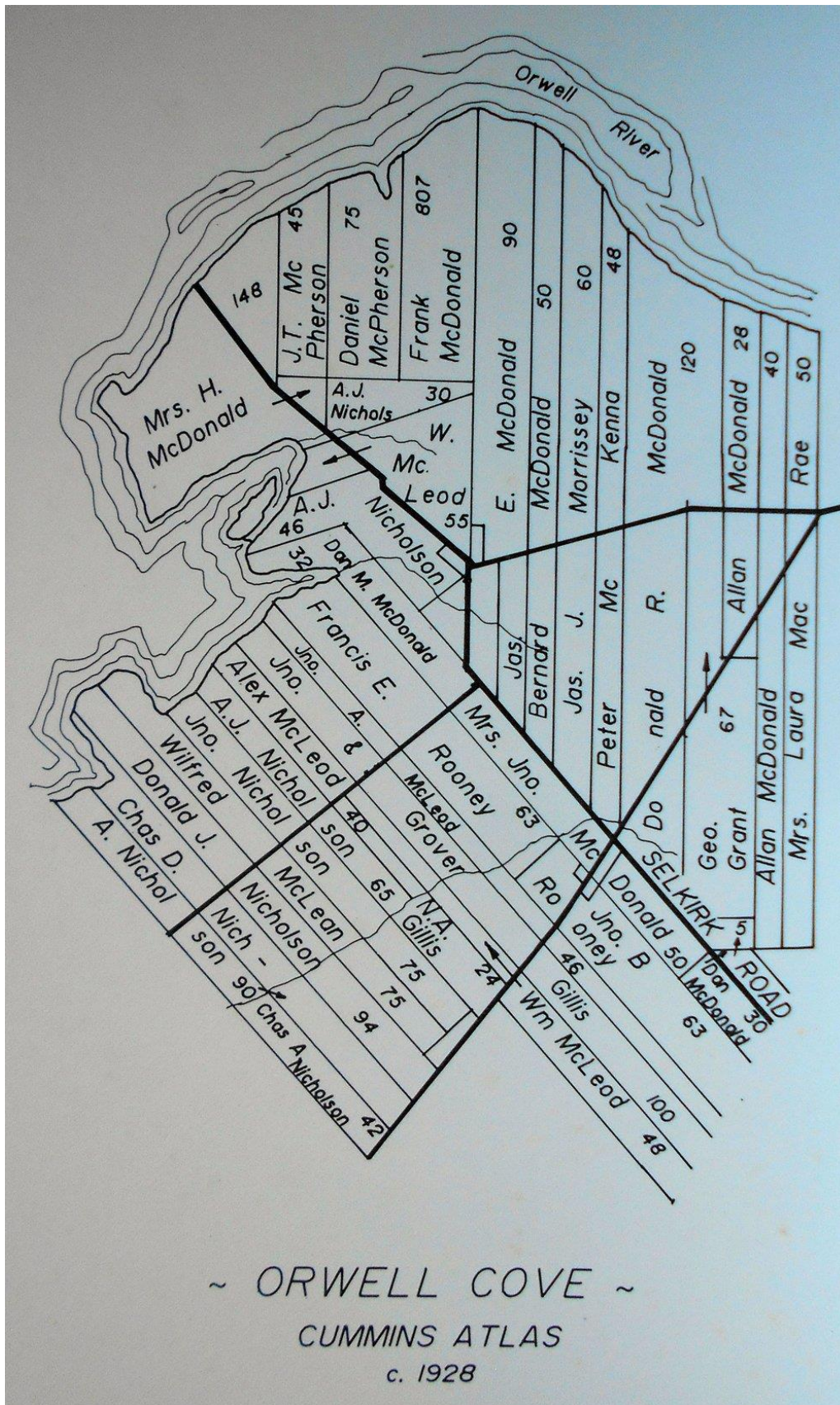
This artificial tooth, made of a material called *ivorine* – a type of plastic developed in the late 19<sup>th</sup> century – is equipped with tiny metal nails for installation as a dental replacement.



### You Can Help!

Tell us your story. If you find an artifact anywhere in PEI, contact Dr. Helen Kristmanson, Director of Aboriginal Affairs and Archaeology, at [hckristmanson@gov.pe.ca](mailto:hckristmanson@gov.pe.ca) or (902) 368-5378. Artifacts provide valuable information about PEI's past and our provincial archaeology team can make sure that this information is recorded and shared and that the artifacts are kept safe for future generations to study and appreciate.





**MALCOLM MCPHERSON AND CHRISTINA**

*Generation one: Patrick and Christina. Generation two: Charles and Mary.*

*Generation three: Malcolm and Christina*

was born about:

At:

Died about:

At:

Married about:

At:

To:

She was born about:

At:

Died about:

At:

They had the following children...

1/.

2/.

3/.

4/.

5/.

**Births of parents of these children...**

**Marriage...**

**Births of children...**

**Deaths...**

Name                      Malcolm McPherson

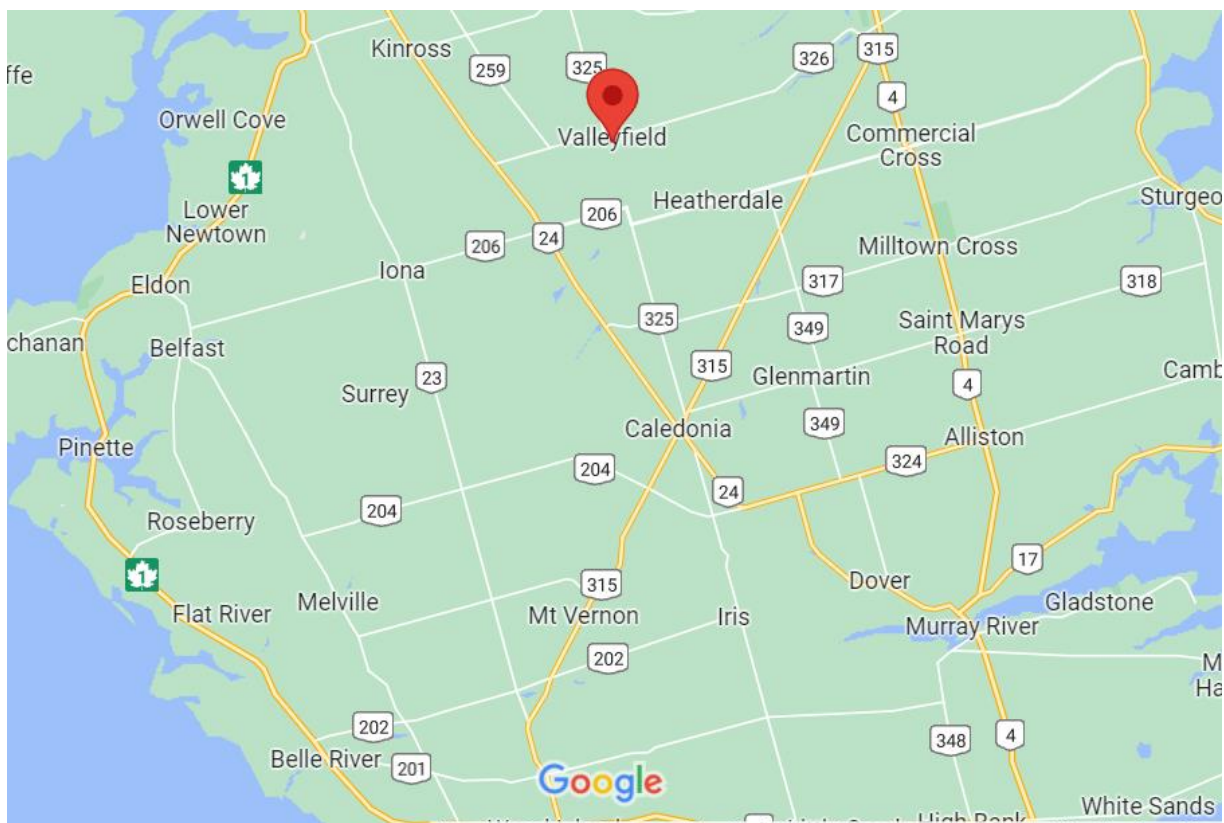
Death or Burial Place      Lot 57, Queens, Prince Edward Island, Canada

Death or Burial  
Longitude -62.74504371

Death or Burial  
Latitude 46.12887463

Cemetery Valleyfield Cemetery

Death Date 12 Dec 1805



CHAPTER FOURTEEN

CHILDREN OF MALCOLM AND MARY STEWART

1/. MARY STEWART

*Generation one: Patrick and Christina. Generation two: Charles and Mary.*

*Generation three: Malcolm and Mary. Generation four: Mary and Malcolm Bell*

GENERATION FOUR

**Mary** was born about: 1832

At:

Died about: 9 Dec 1916

At:

Married about:

At:

To: **Malcolm Angus Bell**

He was born about: 1817

At:

Died about:

They had the following children...

1/. **Mary Bell McMillan**

2/. **Angus Malcolm Bell**

3/.

4/.

5/.

Children

•



Mary Bell McMillan

1852–1875

•



Angus Malcolm Bell

1857–1933

## MEMORIALS

### MARY STEWART BELL



#### BIRTH

20 Jun 1832

Queens County, Prince Edward Island, Canada

#### DEATH

9 Dec 1916 (aged 84)

Queens County, Prince Edward Island, Canada

#### BURIAL

Saint John's Presbyterian Cemetery

Belfast, Queens County, Prince Edward Island, Canada

#### MEMORIAL ID

181039561 · [View Source](#)



**MALCOLM ANGUS BELL**

BIRTH	1817 Queens County, Prince Edward Island, Canada
DEATH	3 May 1896 (aged 78–79) Queens County, Prince Edward Island, Canada
BURIAL	<u>Saint John's Presbyterian Cemetery</u> Belfast, Queens County, Prince Edward Island, Canada
MEMORIAL ID	181033528 · <a href="#">View Source</a>

**2/.ANGUS MALCOLM AND MARGARET STEWART (NZ)**

*Generation one: Patrick and Christina. Generation two: Charles and Mary.*

*Generation three: Malcolm and Mary. Generation four: Angus and Margaret*

**GENERATION FOUR**

Was born 19 Nov 1833 and died 20 Apr 1925

**SEE THE FOLLOWING FOR THEIR GENEALOGY IN NEW ZEALAND**

**ABERCROMBIE-THOMAS-WALLIS-STEWART  
GENEALOGIES**

**JOURNAL FIVE. PART TWO**

**STEWART/STUART**

**FAMILIES FROM THE ISLE OF SKYE, SCOTLAND  
PRINCE EDWARD ISLAND-CANADA  
AND THEN NEW ZEALAND**

**CONTINUATION FROM THE ABERCROMBIE JOURNAL ONE, (PART ONE). THOMAS JOURNAL TWO, (PART TWO). SUXSPEACH FAMILY. HAROLD AND PENELOPE THOMAS WW1 EXPERIENCES. JOURNAL THREE (PART THREE). AND WALLIS AND DOCKERY JOURNAL FOUR PART ONE....JOURNAL FOUR PART TWO. AND STEWART/STUART JOURNAL FIVE PART ONE.**

### 3/. ANN STEWART

*Generation one: Patrick and Christina. Generation two: Charles and Mary.*

*Generation three: Malcolm and Mary. Generation four: Ann and William*

#### GENERATION FOUR

Ann was born about: 1 Jan 1836

At:

Died about: 26 August 1892

At:

Married about:

At:

To: **Donald Taylor**

She was born about:

At:

Died about:

At:

They had the following children...

1/. **Charles Stewart Taylor 1866 1889 lost at sea**

2/. **Donald Alton Taylor Jr 27 September 1868**

3/. **William Duncan Taylor 1869-1953**

4/.

5/.

•



William Duncan Taylor

1869–1953

#### Births of parents of these children...

**Malcom Stewart**

Father

Canada, Prince Edward Island Baptism Card Index, 1721-1885

Spouses Mary Mcpherson

**Children** Ann Stewart

## Memorials

### ANN STEWART TAYLOR

<b>BIRTH</b>	1 Jan 1836 Belle River, Queens County, Prince Edward Island, Canada
<b>DEATH</b>	26 Aug 1892 (aged 56) Wood Islands, Queens County, Prince Edward Island, Canada
<b>BURIAL</b>	<u>Belle River Pioneer Scotland Cemetery</u> Belle River, Queens County, Prince Edward Island, Canada
<b>MEMORIAL ID</b>	191166363 · <a href="#">View Source</a>

#### Gravesite Details

There is no headstone for Ann.

### DONALD TAYLOR

<b>BIRTH</b>	20 Jun 1823 Rusticoville, Queens County, Prince Edward Island, Canada
<b>DEATH</b>	12 Feb 1870 (aged 46) Belle River, Queens County, Prince Edward Island, Canada
<b>BURIAL</b>	<u>Belle River Pioneer Scotland Cemetery</u> Belle River, Queens County, Prince Edward Island, Canada
<b>MEMORIAL ID</b>	191166399 · <a href="#">View Source</a>

#### Gravesite Details

There is no headstone for Donald according to several volunteers.

#### 4/. JOHN MALCOLM STEWART AND MARY CAMPBELL

*Generation one: Patrick and Christina. Generation two: Charles and Mary.*

*Generation three: Malcolm and Mary. Generation four: John and Mary*

#### GENERATION FOUR



**John** was born about: 29 Oct 1837

At:

Died about:

At:

Married about:

At:

To: **Mary Campbell**

She was born about:

At:

Died about:

At:

They had the following children...

- 1/.
- 2/.
- 3/.
- 4/.
- 5/.

**Births of parents of these children...**

**Malcom Stewart**

Father

Canada, Prince Edward Island Baptism Card Index, 1721-1885

**Spouses** Mary Mcpherson

**Children** John Stewart

**Marriage...**

**Births of children...**

**Children**



*Minnie Maude Stewart McGuigan*

1869–1935

•



*Ann Amanda Stewart*

1872–1899

•



Hector Allen Stewart

1874–1932

•



Edith Marrion Stewart

1877–1882

•



John Malcolm Stewart

1881–1933

**MEMORIALS**



**JOHN MALCOLM STEWART**

**BIRTH**

29 Oct 1837

Belle River, Queens County, Prince Edward Island, Canada

**DEATH**

15 Jul 1906 (aged 68)

Agassiz, Fraser Valley Regional District, British Columbia, Canada

**BURIAL**

Mountain View Cemetery

Vancouver, Greater Vancouver Regional District, British  
Columbia, Canada

**PLOT**

OLD-5-01-009-0010

**MEMORIAL  
ID**

26307207 · [View Source](#)

**MARY CAMPBELL STEWART**

<b>BIRTH</b>	12 Nov 1837 Prince Edward Island, Canada
<b>DEATH</b>	27 Jan 1900 (aged 62) British Columbia, Canada
<b>BURIAL</b>	<u>Mountain View Cemetery</u> Vancouver, Greater Vancouver Regional District, British Columbia, Canada
<b>PLOT</b>	OLD-5-01-009-0011
<b>MEMORIAL ID</b>	26269578 · <a href="#">View Source</a>

She was a daughter of Alexander Campbell and his wife, Janet McInnis. She married John M. Stewart.

I would love to exchange family history information. Please email me by clicking my name below. Kathleen Giusti

Bio by: [Kathleen Giusti](#)

**FAMILY MEMBERS**

**Parents**

•



[Alexander Campbell](#)

1800–1884

•



Jessie *McInnis* Campbell

1803–1875

**Siblings**

•



Donald Campbell

1827–1920

•



Sarah Marion *Campbell* McRae

1830–1908

•



Margret *Campbell* Cantelo

1831–1913

•



~ 155 ~

Alexander Campbell

1833–1916

•



Hector Campbell

1839–1872

•



Roderick Campbell

1841–1865



May you rest in peace Mary

Left by [Judy](#) on 28 May 2019



Rest in peace. With love,

Left by [Kathleen Giusti](#) on 5 Jun 2008

**NOTES ONLY...**

**John Stewart**

**Name: John Malcolm Stuart**

**Record Type: Owner**

**Residence Place: Belle Creek, Queens, Prince Edward Island , Canada**

**Occupation: Tradesman - non marine**

**Vessel Name: Ann Westaway**

**Vessel Type: Schooner**

**Vessel Registration Number: I866113**

**Vessel Registration Place: Prince Edward Island (all ports)**

**Year Vessel Constructed: 1866**

**Crew Number: 1**

See...<https://www.islandregister.com/shippingnotes.html> for boating information for Stewart

## 5/. CHRISTY STEWART AND NEIL BELL

*Generation one: Patrick and Christina. Generation two: Charles and Mary.*

*Generation three: Malcolm and Mary. Generation four: Christy and Neil*

### GENERATION FOUR

**Christy** was born about: 1845

At:

Died about: 1917

At:

Married about:

At:

To: **Neil Bell**

She was born about:

At:

They had the following children...

Mother of John M. BELL 1870–

Ewen BELL 1873–1877

Angus Daniel Neil Bell 1877–1915

Emma Priscilla BELL 1877–1945

1/.

2/.

3/.

4/.

5/.

**Births of parents of these children...**

**Marriage...**

**Spouse**

•



~ 158 ~

Neil Bell

1829–1911

### Births of children...

#### Children

•



Angus Neil Bell

1867–1915

•



Ewen Bell

1873–1877

•



Emma Priscilla *Bell* MacPherson

1877–1945

**MEMORIALS ...**



**CHRISTY BELLE STEWART BELL**

**BIRTH**

Jan 1846

Queens County, Prince Edward Island, Canada

**DEATH**

14 Feb 1917 (aged 71)

Queens County, Prince Edward Island, Canada

**BURIAL**

Saint John's Presbyterian Cemetery

Belfast, Queens County, Prince Edward Island, Canada

**MEMORIAL  
ID**

181042758 · [View Source](#)

**NEIL BELL**

**BIRTH**

11 Jul 1829

Belle River, Queens County, Prince Edward Island, Canada

**DEATH**

27 Jun 1911 (aged 81)

Queens County, Prince Edward Island, Canada

**BURIAL**

Saint John's Presbyterian Cemetery

Belfast, Queens County, Prince Edward Island, Canada

**MEMORIAL  
ID**

181042719 · [View Source](#)

## Parents

- 



Catherine *MacMillan* Bell

1794–1877

## Siblings

- 



Lauchlin Bell

1818–1900

## 6/. CAPTAIN CHARLES STEWART AND EMELINE ZWICKER

*Generation one: Patrick and Christina. Generation two: Charles and Mary.*

*Generation three: Malcolm and Mary. Generation four: Charles and Emeline*

### GENERATION FOUR

**Charles** was born about: 9 Mar 1843

At: Belle Creek, Prince Edward Island, Canada

Christened 25 Jun 1843 in St John's Church, Belfast Prince Edward Island

Died about: **Missing...**

At:

Married about: 28 Jun 1877

At: Prince Edward Island, Canada.

Witnesses Samuel B Adkin and Roger Buchanan

To: **Emeline Zwickler**

She was born about: 1856

At: New Germany, Nova Scotia, Canada

Died about: 1946

At: Lower Montague, Prince Edward Island, Canada

They had the following children...

1/. **Mary Agnes 1878-1973**

2/. **Annie Florence 1881-1972**

**Births of parents of these children...**

#### **Malcom Stewart**

Father

Canada, Prince Edward Island Baptism Card Index, 1721-1885

**Spouses** Mary Mcpherson

**Children** Charles Stewart

## MEMORIALS

### CHARLES STEWART

Note: It is believed that **Charles** was murdered out on a goldfield somewhere, but this was never confirmed. However, he went missing, so therefore, no memorial for him.

**See following notes written by a great, great, granddaughter tell his story...**

*Annie Florence Jolley was born Annie Florence Stuart in Prince Edward Island, Canada, to Emeline Buchanon Zwicker and Charles Malcolm Stuart. She and her elder sister Agnes were their only children, born before Charles followed the gold rush out to western Canada. For some time, we know the family followed him to Washington state, only to return to PEI, then Charles reportedly disappeared after finally making his strike. Rumour has it that he was indeed murdered by his partner, but this has never been proven. My great, great, grandmother moved to Rawlins, Wyoming, to live with her Buchanan cousins in ranch country, and be a little closer to the search for her husband.*

**The following news clip would suggest that our Charles was not around to pay the rent on his land. So therefore, it was confiscated...March 1868**

BY virtue of a writ of Statute Execution, to me directed, issued out of Her Majesty's Supreme Court of Judicature, at the suit of William Findley against Charles **Stewart**, I have taken and seized, as the property of the said Charles **Stewart**. All the Right, Title and Freehold Interest of the said Charles **Stewart** in and to all that tract, piece or parcel of land situate, lying and being at Belle Creek on Township No. 62, bounded as follows, that is to say:—Commencing at the Western boundary line of the farm in the possession of Malcolm **Stewart**, and thence following the highway in nearly a westerly course for the distance of five chains, and thence following a northerly course through the farm of Alexander **Stewart** into the rear boundary line of said farm, thence following the course of the same in an easterly direction until it meets the western boundary of said Malcolm **Stewart's** farm, and thence following the said line in a southerly direction to the place of commencement, containing forty acres of Land, a little more or less, together with all houses and buildings thereon, and all appurtenances thereto belonging, in Queen's County, and I do hereby give Public Notice, that I will, on Tuesday, the Twenty-second day of September, 1868, at Twelve o'clock, noon, at the Court House, in Charlottetown, in the said County, set up and sell, at Public Auction, the said Property, or as much thereof as will satisfy the levy marked on the said writ, being sixty-one pounds, three shillings and four pence, (£61 3s. 4d.) together with interest on sixty pounds from 10th January, 1868, until paid, besides Sheriff's fees and incidental expenses.

FRANCIS LONGWORTH, Sheriff.

Sheriff's Office, Queen's County, }  
17th March, 1868. }

4in [aug27

**EMMELINE “EMMA” ZWICKER STUART**



<b>BIRTH</b>	1856 Lunenburg County, Nova Scotia, Canada
<b>DEATH</b>	27 Nov 1946 (aged 89–90) Queens County, Prince Edward Island, Canada
<b>BURIAL</b>	<u>Lower Montague Cemetery</u> Lower Montague, Kings County, Prince Edward Island, Canada
<b>MEMORIAL ID</b>	187075156 · <a href="#">View Source</a>

Married Charles Stuart 28 Jun 1877 • Prince Edward Island, Canada. Witnesses Samuel B Adkin and Roger Buchanan.

---

**Inscription**

Emmeline Zwicker  
wife of  
Charles M Stuart  
1856 1946

---

**Family Members**

**Parents**



**George Zwicker**

~ 164 ~

1827–1914

**Margaret A. *Buchanan* Zwicker**

unknown–1857

**Siblings**



**Isabel Annie *Zwicker* Langille**

1855–1926

**Half Siblings**



**Lydia *Zwicker* Feindle**

1859–1943



**Joseph Howard *Zwicker***

1863–1938

**George Allen *Zwicker***

1867–1929



**Esther *Zwicker* Lovelace**

1870–1971



**Joshua Newton *Zwicker***

~ 165 ~

1872–1953

Flowers

[Plant Memorial Trees](#)



May you rest in peace Emmeline

Left by [Judy](#) on 4 Feb 2018

[Leave a Flower](#)

**GEORGE ZWICKER**

**PARENT OF EMMELINE STUART NEE ZWICKER**

**MEMORIAL**



## GEORGE ZWICKER

<b>BIRTH</b>	12 Feb 1827 Lunenburg, Lunenburg County, Nova Scotia, Canada
<b>DEATH</b>	12 Aug 1914 (aged 87) Barss Corner, Lunenburg County, Nova Scotia, Canada
<b>BURIAL</b>	<u>Indian Brook Cemetery - Barss Corner</u> Barss Corner, Lunenburg County, Nova Scotia, Canada
<b>MEMORIAL ID</b>	154792097 · <a href="#">View Source</a>

Son of John/Jacob & Anna/Barbara (Rafuse) Zwicker. He was a resident of Danvers, Mass., at the time of his death, while back up in Nova Scotia.

m1. 1851 (Lunenburg?) to Margaret Ann Buchanan (d. 7 Nov 1857 NS), known children:

- \* Barbara Eliz.? m. Sam Hubley, Camperdown.
- \* Annie Isabelle m. Jacob Langille, Barss Corner.
- \* Emeline "Emma" m. Charles Malcolm Stuart, Prince Edward Island.
- \* Margaret Emma, b. 9 Nov 1857, rec. 1871 Petite Riviere, d. 1897?

He m2. 10 Jul 1858 New Dublin to Elizabeth Fancy (d/o Jacob, and Elizabeth Hebb), known children:

- \* Lydia m. Joshua Feindle, Danvers, Mass.
- \* Eleanor, b. 15 Apr 1860, d. bef. Apr 1861?
- \* William, b. 15 Apr 1860, d. bef. Apr 1861?
- \* Martha m. William Lohnes, New Germany.
  - \* Joseph Howard Zwicker, Halifax.
- \* Augusta, b. 1865?, rec. 1881 New Germany.
  - \* George Allen Zwicker, Danvers, Mass.
- \* Esther m. Freeland Lovelace, Danvers, Mass.
  - \* Joshua Newton Zwicker, Danvers, Mass.
  - \* Caleb Dawson Zwicker, Somerville, Mass.

The Geo. Zwicker who m. abt. 1858 to Hannah Ramey, and another who m. bef. 1910 to Ellen Hubley, are both currently believed to be other individuals with this same name.

## FAMILY MEMBERS

### Spouses

•

Margaret A. *Buchanan* Zwicker

unknown–1857 (m. 1851)

•



Elizabeth *Fancy* Zwicker

1831–1911 (m. 1858)

### Children

•



Isabel Annie *Zwicker* Langille

1855–1926

•



Emmeline *Zwicker* Stuart

1856–1946

•



~ 169 ~

Lydia *Zwicker* Feindle

1859–1943

•



Joseph Howard Zwicker

1863–1938

•

George Allen Zwicker

1867–1929

•



Esther *Zwicker* Lovelace

1870–1971

•



Joshua Newton Zwicker

1872–1953

## FLOWERS



Grgrgrgrandfather, Emeline Zwicker Stuart's father, raised by the Buchanons after Margaret died. Emeline was from your first family- my grgrgrgrandfather.

Left by [Annie](#) on 28 Feb 2016

## CHILDREN OF CHARLES STEWART AND EMELINE ZWICKER

### 1/. MARY AGNES 1878-1973



#### MARY AGNES *STUART* MACLELLAN

<b>BIRTH</b>	2 Jul 1878 Belle River, Queens County, Prince Edward Island, Canada
<b>DEATH</b>	19 Mar 1973 (aged 94) Charlottetown, Queens County, Prince Edward Island, Canada
<b>BURIAL</b>	<u>People's Roman Catholic Cemetery</u> Charlottetown, Queens County, Prince Edward Island, Canada
<b>MEMORIAL ID</b>	117466252 · <a href="#">View Source</a>

Wife of Sixtus MacLellan; 46 Prince Street, Charlottetown

#### *INSCRIPTION*

MacLELLAN: Sixtus MacLELLAN, Aug 10, 1861-Apr 30, 1937; his w., Mary Agnes STUART, July 2, 1878-March 19, 1973. (back of stone) Harold Joseph, Oct 3, 1900-Nov 28 1900. Sixtus Joseph, Dec 2, 1915-Sept 5, 1917. Lloyd Joseph, June 4, 1919-July 24, 1929. George R. MacLELLAN, Dec 26, 1896-July 13, 1972.

*GRAVESITE DETAILS*  
Daughters' headstone adjacent

**Spouse**

•



Sixtus MacLellan

1861–1937

**Children**

•



George R. MacLellan

1896–1972

•



Mary Adele MacLellan

1898–1986

•



~ 173 ~

Frances Ann MacLellan

1899–1991

•



Harold Joseph MacLellan

1900–1900

•



Wanda Agnes *MacLellan* Pennell

1901–1968

•



Vera Emeline MacLellan

1903–1990

•



~ 174 ~

M. Iris MacLellan

1909–1981

•

Imelda Stephanie *MacLellan* Wellner

1914–2009

•



Sixtus Joseph MacLellan

1915–1917

•

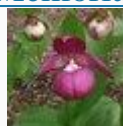


Lloyd Joseph MacLellan

1919–1929

**FLOWERS**

[Plant Memorial Trees](#)



May you rest in peace Mary. Daughter of Captain Charles Malcolm Stuart and Emma ' Emeline ' Zwicker.

Left by [Judy](#) on 4 Feb 2018

## **2/. ANNIE FLORENCE STUART AND WILLIAM ALBERT JOLLEY**

*Annie Florence Jolley was born Annie Florence Stuart in Prince Edward Island, Canada, to Emeline Buchanon Zwicker and Charles Malcolm Stuart. She and her elder sister Agnes were their only children, born before Charles followed the gold rush out to western Canada. For some time, we know the family followed him to Washington state, only to return to PEI, then Charles reportedly disappeared after finally making his strike. Rumour has it that he was indeed murdered by his partner, but this has never been proven. My great, great, grandmother moved to Rawlins, Wyoming, to live with her Buchanan cousins in ranch country, and be a little closer to the search for her husband. There my Nana met William Albert Jolley, who had recently obtained his medical licence and had enlisted as part of the Army reserves. They married, helped close the frontier, then she followed him through his career and many states- California, PA, waited for him to come home from 2 overseas tours, buried an infant daughter and welcomed a son. Will died while assigned in Arkansas, where upon she moved her family to PA, Wayne, where she lived until her death. On the way, she raised her 2 grandchildren- left motherless at a young age from the death of their mother due to TB.*

*Nana was a lovely, wonderful relic of 'those days', who never, ever complained and always gave us her best at all times. She was an amazing example of the dignity she expected of everyone else, was very proud of her Scottish family, which was so close she grew up speaking Gaelic around the house, and we miss her as much today as we did when she died decades ago.*





**MEMORIAL**



**ANNIE FLORENCE *STUART* JOLLEY**

<b>BIRTH</b>	21 Nov 1881 Nova Scotia, Canada
<b>DEATH</b>	23 Nov 1972 (aged 91)
<b>BURIAL</b>	<u>Green Mountain Cemetery</u> Boulder, Boulder County, Colorado, USA
<b>PLOT</b>	
<b>MEMORIAL ID</b>	11107680 · <a href="#">View Source</a>



May you rest in peace Annie

Left by [Judy](#) on 25 Feb 2018



Miss you, Nana, think of you very often. Much love,

Left by [Annie](#) on 5 Apr 2014

**Children**



[Malcolm Stuart Jolley](#)

1905–199

~ 178 ~

**WILLIAM ALBERT "WILL" JOLLEY**



## WILLIAM ALBERT “WILL” JOLLEY

<b>BIRTH</b>	25 Jan 1872 Kansas, USA
<b>DEATH</b>	2 Aug 1940 (aged 68) Little Rock, Pulaski County, Arkansas, USA
<b>BURIAL</b>	<u>Green Mountain Cemetery</u> Boulder, Boulder County, Colorado, USA
<b>MEMORIAL ID</b>	114158587 · <a href="#">View Source</a>

*Will grew up the eldest of 4 sons and 1 daughter of Morris P Jolley and Sarah Virginia Evans Jolley, of Ohio then Kansas, Morris a Civil War veteran. Will attended Baker College and Jefferson Medical school, set up his first practice in Rawlins, Wyoming, on the frontier. There he met and married Annie Florence Stuart. They had 2 children, Ketura and Malcolm, but lost Ketura as toddler. Will was a surgeon, called up for the Colorado Mine wars, 2 tours in WW 1, and did home duty in posts in California, Arkansas and Pennsylvania. Along the way he witnessed much history, along with being in the same convoy as the one which included the stricken Lusitania, of which he left a written record, witnessed the range wars, escaped capture in Serbia and kept his surgical practices growing. An avid photogrpaher at a time when few carried a camera, Will recorded his home life and career, leaving a wonderful record for his family to remember him by. Will and Annie raised their 2 grandchildren with their son when his wife Peg died of Tb. The children remember the kind, fascinating man who taught them so much, and miss him alll these years later.*

## FAMILY MEMBERS

### Parents

•



Morris P. Jolley

1843–1922

•



~ 180 ~

Sarah Virginia *Evans* Jolley

1848–1912

### Siblings

- 



Mary Evans *Jolley* Unkefer

1867–1941

- 



Charles Wesley Jolley

1874–1942

- 



Morris Reno Jolley

1876–1932

- 



~ 181 ~

Ralph Evans Jolley

1882–1883

**FLOWERS • 3**



May you rest in peace William

Left by [Judy](#) on 7 Nov 2018



Left by [Annie](#) on 22 Jul 2013

## 7/. DONALD MALCOLM STEWART AND CHRISTINA STEWART

*Generation one: Patrick and Christina. Generation two: Charles and Mary.  
Generation three: Malcolm and Mary. Generation four: Donald and Christina*

### GENERATION FOUR

**Note: There were two Donald and Chrissy/Christina Stewarts living on Prince Edward Island about the same time. Following records could be conjecture only...**

**Donald** was born about: 29 Dec 1846  
At: Belle Creek, Prince Edward Island, Canada  
was christened 10 May 1847 in St John's Church, Belfast Prince Edward Island Died about:  
At:  
Married about: 19 Jun 1871  
At: Springston Prince Edward Island  
To: Christina Stewart  
She was born about:  
At:  
Died about:  
At:

They had the following children...

- 1/. Marjory Ann Mary
- 2/. Margaret Alice C Stewart
- 3/. Malcon Stewart

### Births of parents of these children...

#### Malcom Stewart

Father  
Canada, Prince Edward Island Baptism Card Index, 1721-1885  
Spouses Mary Mcpherson  
Children Donald Stewart

### Marriage...

#### Donald Stewart

Groom  
Canada, Prince Edward Island Marriage Registers, 1832-1888

Marriage 19 July 1871  
Prince Edward Island,  
Canada  
Spouses Christy Stewart

**Births of children...**

**Donald Stewart**

Father

Canada, Prince Edward Island Baptism Card Index, 1721-1885

**Spouses** Christina Stewart

**Children** Marjory Ann Mary Stewart

Name **Marjory Ann Mary Stewart**

Baptism Date **20 Feb 1878**

Baptism Place **Georgetown , Prince Edward Island**

Father's Name **Donald Stewart**

Mother's Name **Christina Stewart**

Entry Number **1**

**Donald Stewart**

Fathe

Canada, Prince Edward Island Baptism Card Index, 1721-1885

**Spouses** Christina Stewart

**Children** Margaret Alice C Stewart

Name **Margaret Alice C Stewart**

Baptism Date **29 Jun 1875**

Baptism Place **Georgetown , Prince Edward Island**

Father's Name **Donald Stewart**

Mother's Name **Christina Stewart**

Entry Number **1**

**Donald Stewart**

Father

Massachusetts Deaths, 1841-1915, 1921-1924

**Birth** Prince Edward Island,  
Canada

**Spouses** Christina Stewart

**Children** Malcome Stewart

Name **Malcon Stewart**

Sex **Female**

Age **17**

Death Date **03 Nov 1901**

Death Place **Boston, Massachusetts**

Marital Status **Single**

Occupation **Iron Moulder**

Father's Name **Donald Stewart**

Mother's Name **Christina Stewart**

Address **28 Batchelder St.**

Age **17y**

Age 17 years

Birth Year (Estimated) 1884

Birthplace P.E.I.

Cemetery Mt. Hope

Father's Birthplace P.E.I.

Mother's Birthplace P.E.I.

Source Reference Stewart, Malcon, 1901

Record Number 7

Record Number 7

26 Apr. 3	William Reilly	do	B	4	11	Walter - intestinal manition	01661 Parkhill St. - do	Hingham	James Reilly	do
27 Apr. 3	Malcom Stewart	do	B	17		Parola - Exhaustion	01228 Parkhill St. - Distention of Stomach	P.E.I.	Donald Stewart	- P.E.I.
28 Apr. 3	John B. Lee	do	B	48	11	1 Congestion at 01794 Caratoga St. - Laborer	Stewart	Ireland	Christina Stewart	- P.E.I.
									Michael B. Lee	Ireland

## 8/.ALEXANDER (SANDY) MALCOLM STEWART AND MARY MACDONALD

*Generation one: Patrick and Christina. Generation two: Charles and Mary.*

*Generation three: Malcolm and Mary. Generation four: Alexander and Mary*

### GENERATION FOUR

**Alexander** was born about: 1852

At: Belle River, Prince Edward Island, Canada

Died about: 1925

At: Belle River, Prince Edward Island, Canada

Married about: 21 March 1881

At: Place Prince Edward Island, Canada

To: **Mary MacDonald**

She was born about: 3 November 1834

At: Flat River, Prince Edward Island, Canada

Died about: 1937

At: Belle River, Prince Edward Island, Canada

They had the following children...

1/. **Mary Emelyn**

2/. **Janetta May**

3/. **Elizabeth May Marion**

4/. **Grace Christina**

5/. **Ethel Alvina**

6/. **Malcolm Alexander**

7/. **Simon Macdonald**

**Births of parents of these children...**

**Marriage...**

**Births of children...**

**Children**

•



Mary Emelyn *Stuart* Evans

~ 187 ~

1884–1966

•



Janetta May Stewart

1886–1886

•

Elizabeth May Marion *Stewart* MacKay

1887–1967

•



Grace Christina Stewart

1890–1891

•



Ethel Alvina Stewart

1891–1892

•



~ 188 ~

Malcolm Alexander Stuart

1893–1984

•



Simon MacDonald Stuart

1899–1982

**MEMORIAL**



**ALEXANDER MALCOLM “SANDY” STUART**

<b>BIRTH</b>	1852 Belle River, Queens County, Prince Edward Island, Canada
<b>DEATH</b>	1925 (aged 72–73) Belle River, Queens County, Prince Edward Island, Canada
<b>BURIAL</b>	<u>Saint John's Presbyterian Cemetery</u> Belfast, Queens County, Prince Edward Island, Canada
<b>MEMORIAL ID</b>	191169496 · <a href="#">View Source</a>

***INSCRIPTION***

STUART  
ALEXANDER M. STUART  
1852-1925  
ALSO HIS WIFE  
MARY MACDONALD  
1854-1937

Discrepancy about birth year. Headstone shows birth year as 1852 census records show 1854.

Born 3 March 1854 • Lot 62, Belle Creek, Queens, Prince Edward Island, Canada

Name Alexander Malcolm Stewart  
Gender Male  
Marriage Date 21 Mar 1881  
Marriage Place Prince Edward Island, Canada  
Spouse Mary McDonald

1901 Census of Canada  
Name Alex M Stewart  
Gender Male  
Marital Status Married  
Age 47  
Birth Day & Month 3 Mar  
Birth Year 1854  
Birthplace Pe  
Relation to Head of House Head  
**Father's Name Malcolm Stewart**  
Alex M Stewart 47  
Malcolm Stewart 91  
Mary Stewart 46  
Mary E Stewart 19  
Lizzie M Stewart 13  
Malcolm Z Stewart 8  
John H Stewart 6  
William W Stewart 4  
Mcdonald Stewart 1

#### MARY MACDONALD STUART

<b>BIRTH</b>	3 Nov 1854 Flat River, Queens County, Prince Edward Island, Canada
<b>DEATH</b>	1937 (aged 82–83) Belle River, Queens County, Prince Edward Island, Canada
<b>BURIAL</b>	<u>Saint John's Presbyterian Cemetery</u> Belfast, Queens County, Prince Edward Island, Canada
<b>MEMORIAL ID</b>	191169911 · <a href="#">View Source</a>

#### Parents

•



~ 191 ~

John MacDonald

1813–1886

•



Mary *MacKinnon* MacDonald

1825–1912

Spouse

•



Alexander Malcolm Stuart

1852–1925 (m. 1881)

Siblings

•



Janet *MacDonald* McKenzie

1851–1935

~ 192 ~

•



Hector Charles MacDonald

1856–1914

•



Elizabeth Sarah MacDonald

1860–1866

## OTHER LINKS

# The Island Register © 2021

## *Prince Edward Island's Premier Genealogy Home Page*

**WE ARE SAD TO ANNOUNCE THAT DAVID HUNTER, FOUNDER OF THE ISLAND REGISTER, PASSED AWAY ON JULY 13TH, 2021. AS A TRIBUTE, WE WILL PRESERVE THIS WEBSITE IN ITS CURRENT STATE FOR THE FORESEEABLE FUTURE. NO FURTHER UPDATES WILL BE MADE. THANK YOU FOR YOUR UNDERSTANDING.**

**- LINDA AND JEFF HUNTER**

16,267,567

Counter Since Jan. 29, 1997 (Site on-line Jan. 1996)

✓ [Suggest This Page To A Friend!](#)

## Welcome to Prince Edward Island!

THE "ISLAND REGISTER" IS YOUR "NUMBER 1" ON-LINE SOURCE FOR P.E.I. GENEALOGY, WITH OVER 1164 P.E.I. LINEAGES, AND 4500+ DOCUMENTS ONLINE. THE REGISTER'S FINEST ASSETS, ARE ITS USERS!

- **What's New! - Listing the Latest Updates on the Register!**

- **Featured Articles and Notices!**

- **NEW** "[Century Of Immigration](#)" - New, May 28, 2019! **NEW**
- Visit: "[VY2AC on Prince Edward Island](#)" - New, April 24, 2010!
- Visit: "[The PEIGS and CMNI Site!](#)"
- Announcing: "[The Prince Edward Island Surnames List MkII](#)"
- Online Map: "[The 1863 Lake Map](#)" - Digitization Complete!
- History: "[The Telephone on P.E.I.](#)" - History, Museum, Party line stories!
- Our "[Laptop Project Page](#)" - Rebuilding laptops for needy local children!

- **PEI Lineages - Index: Our #1 Feature !**

THIS CHOICE WILL SEND YOU TO A LISTING OF MANY PIONEER P.E.I. FAMILIES, WITH INFORMATION ON HOW THEY ARRIVED ON THE ISLAND, AND ON THEIR DESCENDANTS. MANY "NEW" LINEAGES ARE BEING ADDED EACH WEEK!



This photo shows some of my Great-Great Grand Father, Samuel Hyde's family. To see full size with legend and information, click on photo. This is one of our many featured P.E.I. lineages!

- **[Books, CDs & More](#) - Index**

*ONLINE BOOKS, BOOK AND CD REVIEWS, AND RELATED INFORMATION!*

- **[Censuses, Maps, and Related Documents](#) - Index**

*CENSUSES, DIRECTORIES, CHURCH RECORDS, HISTORICAL MAPS, ETC.!*

- **[Noteworthy Documents](#) - Index**

*FENCEVIEWER AND SHERIFF LISTS, PEI LETTERS, PARLIAMENTARY LISTS, BUDGETS, & OTHER HISTORICAL DOCUMENTS ON THE REGISTER!*

- **[Our P.E.I. Databases](#) - Index**

*LAND RECORD, POSTAL, FAMILY BIBLE AND WILL, AND OTHER DATABASES!*

- **[P.E.I. Resources / Info Pages](#) - Index**

*PEI RESOURCES ON THE REGISTER - REUNIONS AND UPCOMING EVENTS, PEIGS, ABEGWEIT BRANCH UEL ASSN., AND MORE!*

- **[P.E.I. Ship Information](#) - Index**

*INDEX TO PASSENGER LISTS, SHIPPING INFO, MARINERS, PEI SHIPS DATABASE, AND MORE!*

- **[Other Feature Pages](#) - Index**

*OTHER FEATURES AND DOCUMENTS, INCLUDING CEMETERIES, FORTUNE RIVER PROJECT, STRAY/OBITUARY BOOKS, GLENALADALE, SCRAPBOOKS, PEIR, AND MORE!*

- **[Diaries, Family Histories, Memoirs](#) - Index**

*INTERESTING DIARIES, FAMILY HISTORIES, DAYBOOKS, AND JOURNALS!*

- **[Services, Guides and other Helpers](#) - Index**

*FHC HOLDINGS OF PEI DATA, PEI CHURCHES & COMMUNITY MUSEUMS, COMMUNITIES OF PEI; PAST AND PRESENT, POSTAL CODES, PEI NEWSPAPER REPOSITORIES, FORMS AND GIZMOS, AND PEI GENEALOGISTS!*

- **[Institutional Links](#)**

*PEI ARCHIVES, GOVERNMENT, LIBRARIES, MAPS, AND MUSEUMS, AND A LINK TO ORDER P.E.I. VISITOR'S GUIDE AND MAPS!*

- **[Our Main Links Page](#)**

*LINKS TO GREAT PEI HOME PAGES, SEARCH ENGINES, AND TO PAGES ACROSS CANADA, WEATHER LINKS AND FORECASTS FOR TRAVELERS!*

---

**[The Island Register Queries Page!](#)**

*PLEASE FEEL FREE TO USE THIS BOOK TO ENTER QUERIES PERTAINING TO P.E.I. GENEALOGY! PLEASE TAKE THE TIME TO READ THE BOOK AND ITS ARCHIVES, SOMEONE MAY BE LOOKING FOR YOUR FAMILY!*



- **[Please Sign our Queries Page](#)**
- **[Read our current Queries Page!](#)**

---

**[Our Archived Query Files!](#)**

- **[View Apr 15, 2011 - Jul 13, 2013 Queries Archive](#)**
- **[View Jan 01, 2008 - Apr 15, 2011 Queries Archive](#)**
- **[View Jan 01, 2007 - Dec 31, 2007 Queries Page](#)**
- **[View Jan 01, 2006 - Dec 31, 2006 Queries Page](#)**
- **[Download 2001 - 2007 Archived Queries](#)** - .Zip file!
- **[Archive zip Documentation](#)** - How to use our archives file!

- 
- **[Receive Free Notification](#)** - of Updates to the Register
  - **[Linking to the Island Register](#)** - From Your Page (Link Graphics, Code!)
  - **[Our "Trophy Shelf"](#)** - Our Awards and Reviews Page

---

*PRINCE EDWARD ISLAND - PEI - P. E. I., CANADA*

**[DAVE HUNTER](#)** AND THE ISLAND REGISTER

UPDATED: 1/6/2021 7:07:12 PM

**[RETURN TO TOP!](#)**

STEWART Genealogy John Stewart and Katherine Stuart, Heatherdale, P.E.I. 1810-1982.  
Ada Murray Scoates. Received 16 June 1983. 30 pages. HFG-Stewart-42.

John Stewart of Mount Stewart. F.L. Pigot. Cornelius Howatt Commemorative Series No. 2. 1973. Williams and Crue, Ltd. 28 pages. HFG-Stewart-43. Ivan W. MacKenzie Collection. 3 copies.

A Stewart Family of Isle of Skye, Scotland. With an Emigrant, Donald Stewart to Lot 22, Queens County, Prince Edward Island, Canada in 1857-8. Beverly N. Hayes. n.d. 71 pages. HFG-Stewart- Accession # 4289 Genealogies of P.E.I. families ITEM LISTING - continued 45.

Marion Stewart's Journal. Marion Lea Stewart. December 1976. 103 pages. HFG-Stewart-44. Ivan W. MacKenzie Collection.

Royal Stuart Papers XXIV. Royal Attributes. The Dress of Two Royal Cousins 1542-1587. Valerie Cumming. 1984. Huntingdon, The Royal Stuart Society. 18 pages. ISSN: 0703-997X

Royal Stuart Papers XXVI. Red Queen Vs. White. An Introduction to Schiller's Maria Stuart. Gloria Talbot Vessey. 1985. Huntingdon.

The Royal Stuart Society. 15 pages. ISSN: 0703-997X Royal Stuart Review, Vol. 5, Nos. 1-3, 1984 Ewen Stewart Family History. Compiled and donated by Clare Conway, Brockton MA, 2000. Approx 250 pages.

Skye to Timber Mountain. The Journey of the Kaiwaka Stewarts. Desmond Stewart. Published by author, 2004. 223 pages. ISBN 0-476-00661-9.

From Kinloch Rannoch to South lake and Stratford. A Brief Stewart Family History. Rupert James Stewart, 2004. 111 pages.

Stewarts, Dewars, MacGregors of Lot 48. Compiled by John Benjamin Stewart, MA, PhD. nd. 115 pages. Donated by Katherine Dewar, February 2008. Stewart/ Dunphy Notes. Compiled and donated by Charles Clarkson. 2008. 100 pages approx. See also ELLIS



### DESCENDANTS OF CHARLES STEWART

#### Generation No. 1

**1. CHARLES<sup>2</sup> STEWART (RONALD<sup>1</sup>)** was born 1760 in Sconser, Portree Parish, Isle of Skye, Scotland, and died September 27, 1850, buried in St John's Presbyterian Church Cemetary, Belfast, PEI. He married **MARY McMILLAN** in Portree, Isle of Skye, Scotland. She was born abt. 1770 in Portree Parish, Isle of Skye, Scotland, and died ?, buried in St John's Presbyterian Church Cemetary, Belfast, PEI.

**Notes for CHARLES STEWART:**

**Lived in Mugeary, Isle of Skye, emigrated to PEI on the Polly in 1803 with his wife and several children.**

**Children of CHARLES STEWART and MARY McMILLAN are:**

**2. i. RONALD<sup>3</sup> STEWART, b. Abt. 1800; d. January 8, 1877.**

**3. ii. MALCOLM ANGUS STEWART, b. 1808, Belle Creek, PEI; d. May 10, 1901, Belle Creek, PEI, buried in St John's Presbyterian Church Cemetary, Belfast, PEI.**

**iii. CHRISTINE CATHERINE STEWART.**

**iv. MARY STEWART.**

**Generation No. 2**

**2. RONALD<sup>3</sup> STEWART (CHARLES<sup>2</sup>, RONALD<sup>1</sup>)<sup>1</sup> was born Abt. 1800, and died January 8, 1877. He married CATHERINE MACKAY. She was born Abt. 1816.**

**Children of RONALD STEWART and CATHERINE MACKAY are:**

**i. ALEXANDER<sup>4</sup> STUART.**

**ii. CHARLES STUART, b. December 25, 1835, Three Rivers Rd, PEI<sup>2</sup>.**

**4. iii. HECTOR STUART, b. November 4, 1837, Anderson's Road, PEI; d. 1915.**

**iv. NEIL STUART, b. June 2, 1840, Anderson's Road, PEI<sup>2</sup>; d. January 1898; m. MARY HARRISON BANKS<sup>3</sup>.**

**v. MARY STUART, b. 1847.**

**vi. MARGARET STUART, b. 1853.**

**vii. MALCOLM STUART, b. 1853.**

**viii. DONALD STUART, b. Belle Creek, PEI.**

**5. ix. CATHERINE STUART, b. April 15, 1856, Andersons Rd, Lot 67, PEI.**

**x. JOHN STUART, b. November 20, 1859.**

**3. MALCOLM ANGUS<sup>3</sup> STEWART (CHARLES<sup>2</sup>, RONALD<sup>1</sup>) was born 1808 in Belle Creek, PEI, and died May 10, 1901 in Belle Creek, PEI, buried in St John's Presbyterian Church, Belfast, PEI. He married MARY MacPHERSON. She was born March 1809 in Orwell Bay, PEI, and died January 2, 1889 in Belle Creek, PEI.**

**Children of MALCOLM STEWART and MARY MacPHERSON are:**

**6. i. MARY<sup>4</sup> STEWART, d. December 9, 1916.**

7. ii. ANGUS MALCOLM STEWART, b. November 19, 1833.

8. iii. ANN STEWART, b. January 1, 1836, Belle Creek, PEI; d. August 26, 1922, PEI, buried in Wood Islands Cemetary, PEI.

9. iv. JOHN STEWART, b. October 29, 1837.

10. v. CHRISTY STEWART.

vi. CHARLES STEWART, b. March 9, 1843; m. EMMA ZWICKER.

vii. DONALD MALCOLM STEWART, b. December 29, 1846; d. November 2, 1889, Belle Creek, PEI; m. CHRISTINA STEWART.

11. viii. ALEXANDER M. STEWART, b. 1852; d. 1925.

Generation No. 3

4. HECTOR<sup>4</sup> STUART (RONALD<sup>3</sup> STEWART, CHARLES<sup>2</sup>, RONALD<sup>1</sup>) was born November 4, 1837 in Anderson's Road, PEI<sup>4</sup>, and died 1915, buried in Springfiled Cemetary, PEI. He married ELIZABETH MATHESON. She was born September 15, 1841 in PEI, and died 1921, buried Springfield Cemetary, PEI

Children of HECTOR STUART and ELIZABETH MATHESON are:

i. CATHERINE<sup>5</sup> STEWART.

ii. DONALD STEWART.

iii. WALLACE JOHN STEWART.

iv. FLORENCE M STEWART.

v. ELIZABETH STEWART.

vi. MARGARET STEWART.

vii. HANNA STEWART.

viii. MALCOLM STEWART.

5. CATHERINE<sup>4</sup> STUART (RONALD<sup>3</sup> STEWART, CHARLES<sup>2</sup>, RONALD<sup>1</sup>) was born April 15, 1856 in Andersons Rd, Lot 67, PEI. She married SAMUEL BUCHANAN September 29, 1880 in Charlottetown, PEI, son of JOHN BUCHANAN and MARION NICHOLSON. He was born March 10, 1843 in Point Prim, PEI, and died April 16, 1930, buried in Springton Cemetery, PEI

Children of CATHERINE STUART and SAMUEL BUCHANAN are:

i. GEORGE F.<sup>5</sup> BUCHANAN, b. January 7, 1882.

ii. MARY ETHEL BUCHANAN, b. May 24, 1885.

iii. SARAH BUCHANAN, b. May 27, 1887.

**iv. JOHN STUART BUCHANAN, b. November 7, 1894.**

**v. ROLAND BUCHANAN, b. 1902.**

**6. MARY<sup>4</sup> STEWART (MALCOLM ANGUS<sup>3</sup>, CHARLES<sup>2</sup>, RONALD<sup>1</sup>) died December 9, 1916.  
She married MALCOLM BELL.**

**Children of MARY STEWART and MALCOLM BELL are:**

**i. CATHERINE<sup>5</sup> BELL, b. October 6, 1854, Belle Creek, PEI.**

**ii. ANGUS BELL, b. November 8, 1857, Belle Creek, PEI.**

**iii. FLORA ANN BELL, b. November 29, 1862, Belle Creek, PEI.**

**iv. MALCOLM BELL, b. Belle Creek, PEI.**

**v. SARAH BELL, b. December 8, 1866, Belle Creek, PEI.**

**7. ANGUS MALCOLM<sup>4</sup> STEWART (MALCOLM ANGUS<sup>3</sup>, CHARLES<sup>2</sup>, RONALD<sup>1</sup>) was born  
November 19, 1834. He married MARGARET STEWART February 17, 1858.**

**Marriage Notes for ANGUS STEWART and MARGARET STEWART:**

**Marriage date from the family bible of Ann Stewart, now in the possession of Diane Taylor, great-granddaughter**

**More About ANGUS STEWART and MARGARET STEWART:**

**Children of ANGUS STEWART and MARGARET STEWART are:**

**i. MALCOLM<sup>5</sup> STEWART.**

**ii. SANDY STEWART.**

**iii. CHARLES STEWART.**

**iv. DAUGHTER STEWART, m. ANGUS MACKINNON.**

**v. DAUGHTER STEWART.**

**vi. FLORA STEWART, m. THOMAS JUDD.**

**8. ANN<sup>4</sup> STEWART (MALCOLM ANGUS<sup>3</sup>, CHARLES<sup>2</sup>, RONALD<sup>1</sup>) was born January 1, 1836 in  
Belle Creek, PEI, and died August 26, 1922 in PEI, buried in Wood Islands Cemetary, PEI. She  
married DONALD TAYLOR (CAPTAIN) February 2, 1865. He was born 1823 in Rustico, PEI, and  
died February 12, 1870 in PEI, buried in Wood Islands Cemetary, PEI.**

**More About DONALD (CAPTAIN) and ANN STEWART:**

**Marriage: February 2, 1865**

**Children of ANN STEWART and DONALD (CAPTAIN) are:**

**i. CHARLES STEWART<sup>5</sup> TAYLOR, b. December 1866.**

**Notes for CHARLES STEWART TAYLOR:**

**Lost at Sea when he was 23 years old.**

**12. ii. WILLIAM DUNCAN TAYLOR, b. October 12, 1869, Wood Islands, PEI; d. April 27, 1953.**

**iii. DONALD TAYLOR.**

**Notes for DONALD TAYLOR: Left PEI to work in the Gold Mines and was never heard from again.**

**9. JOHN<sup>4</sup> STEWART (MALCOLM ANGUS<sup>3</sup>, CHARLES<sup>2</sup>, RONALD<sup>1</sup>) was born October 29, 1837.  
He married MARY CAMPBELL.**

**Notes for JOHN STEWART:**

**Lived in BC**

**Source - Belfast Book**

**Child of JOHN STEWART and MARY CAMPBELL is:**

**i. AMANDA MARGARET<sup>5</sup> STEWART, b. October 31, 1868.**

**10. CHRISTY<sup>4</sup> STEWART (MALCOLM ANGUS<sup>3</sup>, CHARLES<sup>2</sup>, RONALD<sup>1</sup>) She married NEIL BELL.**

**Children of CHRISTY STEWART and NEIL BELL are:**

**i. ANGUS DAN<sup>5</sup> BELL, b. February 11, 1868, Belle Creek, PEI.**

**ii. JOHN MALCOLM BELL, b. June 11, 1870, Belle Creek, PEI.**

**Notes for JOHN MALCOLM BELL:**

**Lived in BC**

**iii. EMMA PRISCILLA BELL, b. May 18, 1877, Belle Creek, PEI.**

**iv. EWEN BELL, b. July 12, 1873, Belle Creek, PEI.**

**11. ALEXANDER M.<sup>4</sup> STEWART (MALCOLM ANGUS<sup>3</sup>, CHARLES<sup>2</sup>, RONALD<sup>1</sup>) was born 1852,  
and died 1925, buried in St John's Presbyterian Church, Belfast, PEI**

**He married MARY MACDONALD. She was born 1854, and died 1937, buried St John's Presbyterian Church, Belfast, PEI**

**Children of ALEXANDER STEWART and MARY MACDONALD are:**

**i. MARY EMELINE<sup>5</sup> STEWART, b. March 13, 1882.**

**ii. ETHEL OLOINA STEWART, b. November 17, 1891.**

**iii. SIMON STEWART.**

**Generation No. 4**

**12. WILLIAM DUNCAN<sup>5</sup> TAYLOR (ANN<sup>4</sup> STEWART, MALCOLM ANGUS<sup>3</sup>, CHARLES<sup>2</sup>, RONALD<sup>1</sup>)** was born October 12, 1869 in Wood Islands, PEI, and died April 27, 1953. buried in Wood Islands Cemetary, PEI. He married EVA MACMILLAN. She was born March 12, 1879 in Wood Islands, PEI, and died May 24, 1961, buried: Wood Islands Cemetary, PEI

**Child of WILLIAM TAYLOR and EVA MACMILLAN is:**

**13. i. DANIEL " WALDO"<sup>6</sup> TAYLOR**, b. September 18, 1922, Wood Islands, PEI; d. September 13, 1996.

**[HOME PAGE](#)**

---

**THIS JOURNAL CONTINUES...SEE**

**ABERCROMBIE-THOMAS-WALLIS-STEWART  
GENEALOGIES**

**JOURNAL FIVE. PART TWO**

**STEWART/STUART OF NEW ZEALAND**